

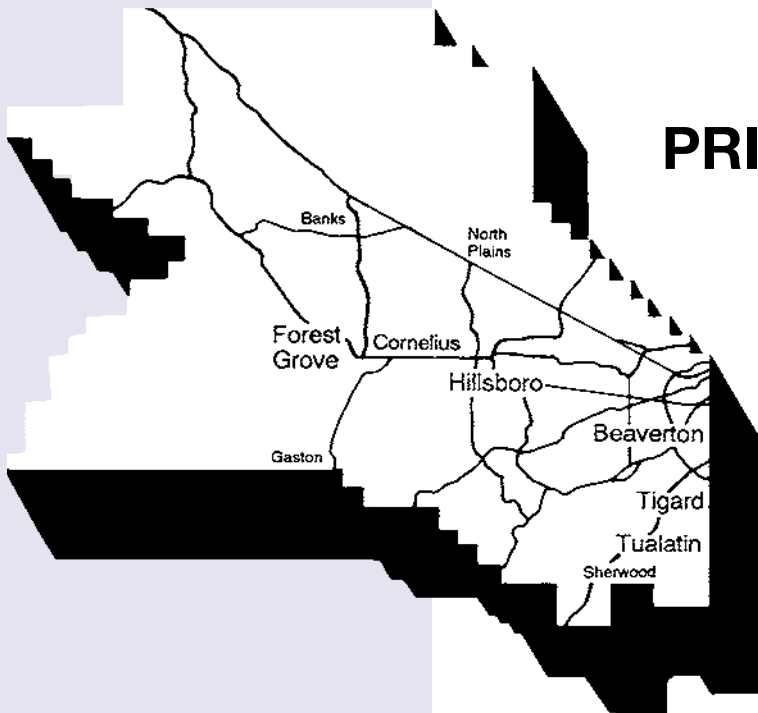


Elections Division  
3700 SW Murray Blvd.  
Beaverton, OR 97005

[www.co.washington.or.us](http://www.co.washington.or.us)

# Washington County

# voters' pamphlet



**VOTE-BY-MAIL  
PRIMARY NOMINATING  
ELECTION  
May 20, 2008**

**To be counted,  
voted ballots must  
be in our office  
by 8:00 pm on  
May 20, 2008**

## **Washington County Board of County Commissioners**

Tom Brian, Chair  
Dick Schouten, District 1  
Desari Strader, District 2  
Roy Rogers, District 3  
Andy Duyck, District 4

---

---

Dear Voter:

This pamphlet contains information for several districts and there may be candidates/measures included that are not on your ballot. If you have any questions, call 503-846-5800.

---

### **Attention:**

Washington County Elections prints information as submitted. We do not correct spelling, punctuation, grammar, syntax, errors or inaccurate information.

---

---



# WASHINGTON COUNTY

---

## OREGON

May 2008

Dear Washington County Voter:

This part of your Voter's Pamphlet is provided by your Washington County Elections Division. It includes information about candidates and measures from local jurisdictions within the boundaries of Washington County. We have inserted the County's Voter Pamphlet into the State's Voter Pamphlet to save mailing and production costs. The State Pamphlet (on either side of the color bar) includes federal and state candidates as well as state measures.

This pamphlet also includes information on the voter assistance program, accessible computer station with alternate format ballot, county commissioner and metro boundary maps and the ballot drop sites within the county.

If you have any questions, or you need assistance please do not hesitate to contact our office for help at 503-846-5800 or email us at [elections@co.washington.or.us](mailto:elections@co.washington.or.us).

Sincerely,

Rich Hobernicht  
Director, Assessment and Taxation  
Ex Officio County Clerk

Mickie Kawai  
Elections Manager

## **Your vote is your voice and Washington County Elections is striving to make sure each voter is "heard".**

---

Washington County Elections Division is implementing the Voter Assistance Program to better serve seniors and citizens with disabilities in our county.

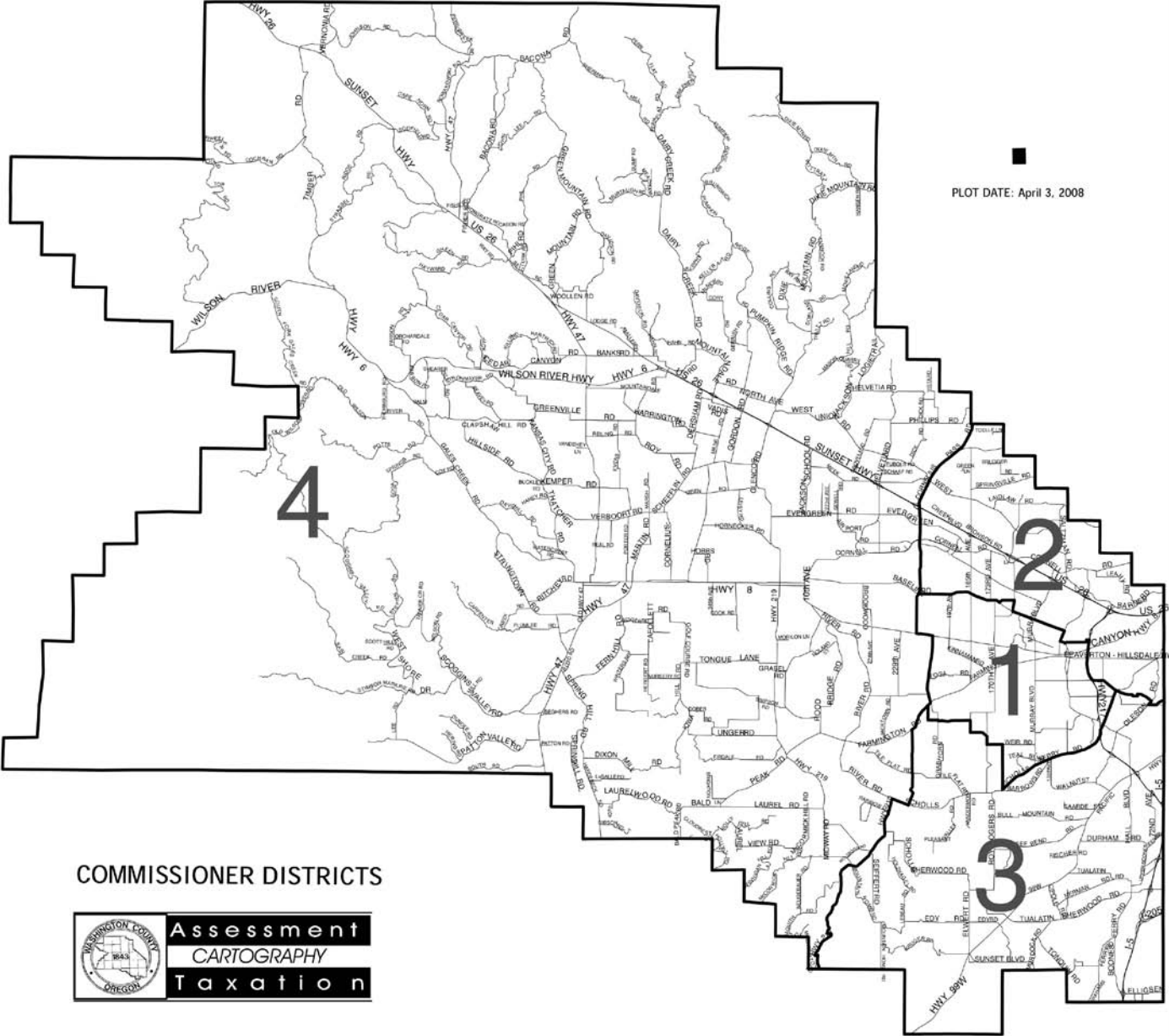
After ballots are mailed, a Voter Assistance Team will assist any voter who requests help. Assistance could include reading the ballot to the voter, reading the Voters' Pamphlet to the voter, or even becoming the "pencil" for the voter. In addition, a special ballot is available which will allow the voter to vote privately and independently using an accessible computer. These services are available at the Washington County Elections Office throughout the election. They also are available at the Washington County Senior Centers at the times listed on page W-23.

**Assistance provided will not include making voting decisions for the voter.**

**The voter must bring ballot package (ballot, secrecy envelope, and signature envelope).**

Call Washington County Elections at 503.846.5800 or email [VAP@co.washington.or.us](mailto:VAP@co.washington.or.us) if you wish to obtain more information about these services.

PLOT DATE: April 3, 2008



COMMISSIONER DISTRICTS



# WASHINGTON COUNTY

## Commissioner, District 3



### Roy R. Rogers (Nonpartisan)

**OCCUPATION:** Certified Public Accountant /County Commissioner

**OCCUPATIONAL BACKGROUND:** Managing Partner of large local firm.

**EDUCATIONAL BACKGROUND:** Portland State University; Bachelor of Science Degree; Numerous additional

courses in finance, management, and public finance.

**PRIOR GOVERNMENTAL EXPERIENCE:** County Commissioner (current); Mayor, City of Tualatin (3 terms); President Oregon Mayors Association; Clean Water Services Board; Numerous State, Regional and County Transportation and Planning Committees; Board Member of Enhanced Sheriffs Patrol, Urban Road Maintenance and Housing Authority Districts

#### ROY IS INVOLVED!

- Tigard First Citizen
- Past President - Tigard Rotary, Tigard Chamber, Tigard & Tualatin Jaycees, Meridian Park Hospital Foundation, Oregon Society of CPA's

#### ROY IS KNOWN FOR:

- Listening and **working hard** for his District.
- Being highly respected and for his **integrity** and **courage**
- Being an effective, **experienced leader**
- A **balanced** and **common sense** approach to government
- A reputation for **fairness**

#### ROY IS COMMITTED TO THESE VALUES:

- Seeking **new creative solutions** to our pressing growth issues
- **Streamlining** government to be cost effective
- Maintaining a safe **livable community**
- Developing **family wage jobs** and economic growth
- A **balanced approach** to roads, transit and pedestrian traffic
- Supporting our public justice system and police to **deter crime**
- **Preserving** our farmland and open spaces
- Providing **environmentally sound** solutions to water quality and air issues
- Encouraging **citizen involvement**
- Continuing our **award winning financial** budget management and operating practices
- **Enhancing services** for our seniors and children

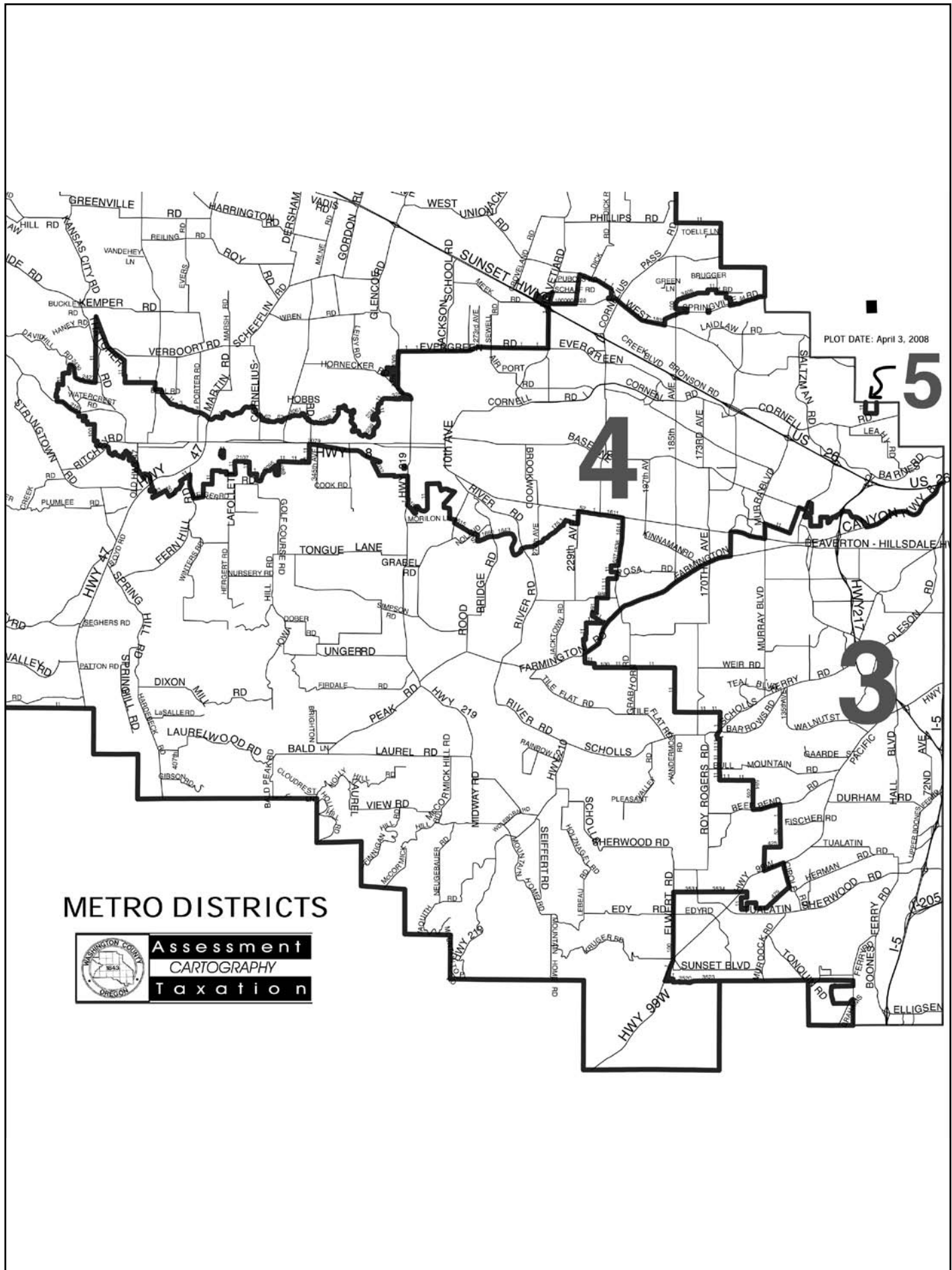
Roy and his family live in the Tigard area. He brings a wealth of **experience** and develops **fresh, creative solutions** to our county's challenges. Roy is known on the Board as a problem solver, and a leader who has brought millions of Federal & State dollars to our County for public works through his hard work and dedication.

#### VOTE FOR ROY ROGERS, OUR RESPECTED VOICE IN GOVERNMENT!

(See our information and endorsements at [www.freewebs.com/citizenstoreelectroyrogers](http://www.freewebs.com/citizenstoreelectroyrogers))

*(This information furnished by Citizens to Re-Elect Roy Rogers)*

The above information has not been verified for accuracy by the county.



# METRO

## Councilor, District 3



### **Carl Hosticka (Nonpartisan)**

**OCCUPATION:** Metro Councilor;  
Professor of Public Policy, University of  
Oregon

**OCCUPATIONAL BACKGROUND:**  
Lecturer in Law, SUNY/Buffalo; Peace  
Corps, Nepal and India

**EDUCATIONAL BACKGROUND:**

Massachusetts Institute of Technology, Ph.D.; Brown University, B.A.

**PRIOR GOVERNMENTAL EXPERIENCE:** Metro Councilor (2000-present);  
State Representative (1983-94)

Dear Metro Voter,

Rather than submitting the usual puff piece, I am writing a short letter to describe things at Metro.

When I was first elected in 2000, Metro was characterized by divisive relationships among members of the Council and between Metro and local governments. We experienced bitter confrontations regarding Urban Growth Boundary decisions in 2002 and 2004. It appeared that we would have a major battle over protection of natural areas within urbanized portions of the region.

As an organization, Metro faced chronic financial problems, trying to do too much with too little.

Things have improved dramatically. We worked with governments and interest groups in the Tualatin basin to create a natural area protection and restoration program. We designed a new approach to making growth decisions that received unanimous support from developers, environmentalists and local governments. Citizens approved a bond measure to acquire more open space by a 60% vote.

At the same time, we were able to put the organization on a sound financial footing, reducing our work force and creating a rainy day fund.

More remains to be done. We are working with local governments to shape the direction of growth for the next fifty years. By 2010, we need to identify areas for future urbanization and areas that will be protected for agriculture and natural areas. We need to find a way to finance the roads, sewers, parks, libraries and other public services required by growth. We need to assure that all these decisions maintain and enhance the quality of life that makes our region the envy of the world.

I am seeking reelection to continue this work. I have been honored by your support in past elections and look forward to the same this year.

*(This information furnished by Carl Hosticka)*

The above information has not been verified for accuracy by the county.

# CITY OF BEAVERTON

## Mayor



**Denny Doyle**  
(Nonpartisan)

**OCCUPATION:** Small Business Owner

**OCCUPATIONAL BACKGROUND:** 30+ years business experience; owner/president of management/data processing business; Beaverton City Councilor, 1994 – present.

**EDUCATIONAL BACKGROUND:**

Illinois State University, B.A. Political Science.

**PRIOR GOVERNMENTAL EXPERIENCE:** Beaverton Arts Commission-council liaison; Tualatin Hills Parks/Recreation District Board; Washington County Advisory Council on Aging and Veterans Services; Beaverton School District Long Range Planning Committee.

**Family/Community Service** Denny and wife, Ann, have two children, both graduates of Beaverton schools; Beaverton Chamber of Commerce and Rotary Club member; youth sports coach.

### It's Time for a New Mayor of Beaverton

After 16 years of the same Mayor, Beaverton needs change. Denny is committed to fixing City Hall.

Denny will:

- Demand financial accountability to taxpayers
- Cut Mayor's salary by 10%. Currently, the Mayor makes \$138,000 – more than the Governor
- Ensure regular audits
- Return City Hall to the community
- Lead with transparency – no secret deals!

### Lead on Shared Priorities

- Reduce traffic congestion – increase developers fees to pay for roads, better pedestrian safety, and say NO to traffic-clogging, WalMart-type developments
- Build a vibrant downtown
- Fight to keep seniors in their homes as property taxes skyrocket

### Build Partnerships with Local Businesses

"Denny has the experience to ensure financial accountability and repair relationships with local businesses."

-- Jim McCreight, past president, Chamber of Commerce

### Support Strong Schools

"Denny will put his leadership and experience to work, building a strong partnership with our schools to benefit our children."

-- Vicki Henry, teacher; Bruce Weitzel, retired Beaverton principal.

### Increase Public Safety

"Our Mayor appears more concerned with the appearance of public safety than actually providing it. We support Denny for Mayor."

-- Jon Shields, President, Beaverton Police Association.

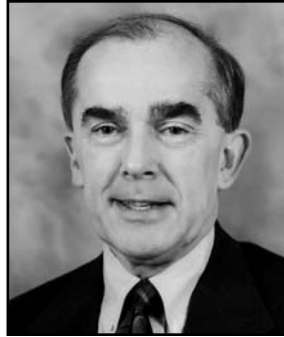
### We support Denny for Mayor!

State Senator **Mark Hass**; Beaverton City Councilor **Bruce Dalrymple**; Former Mayor **Steven Loy**; Former Governor **Vic Atiyeh**; School Board member **Mary VanderWeele**; **Beaverton Police Association**; **Nike**; **City of Beaverton Workers**, SEIU Local 503; State Treasurer **Randall Edwards**; State Representative **Tobias Read**; **Oregon League of Conservation Voters**; and more.

*(This information furnished by Denny Doyle)*

The above information has not been verified for accuracy by the county.

## Mayor



**Rob Drake**  
(Nonpartisan)

**OCCUPATION:** Beaverton Mayor

**OCCUPATIONAL BACKGROUND:** Director of Operations – Decision Point Data; General Sales Manager – Hinman Vineyards; Sales Manager – Columbia Dist./Maletis Beverage

**EDUCATIONAL BACKGROUND:**

Portland State University: M.B.A. (not completed), B.S. Psychology/Law Enforcement; Sunset HS

**PRIOR GOVERNMENTAL EXPERIENCE:** Beaverton Mayor (1993-present); City Council (1987-1992); Planning Commission (1981-1986); Budget Committee (1987-present); Design Review Board, Chair (1983-1986)

### **"KEEP BEAVERTON THE BEST"**

#### **ROB DRAKE BRINGS PROVEN LEADERSHIP & RESULTS**

##### **Enhanced, Effective Public Safety**

- Beaverton is recognized as the safest city in the northwest by the 14th Annual Morgan Quitno Press Safest City Awards - cities above 75,000 population.

*-Morgan Quitno Press, 11/25/07*

##### **Strong Financial Position & Management**

- Beaverton City government continues to operate in a business-like way providing efficient, cost-effective services.
- Each year of my service, we've been recognized for outstanding budgeting, receiving the Government Finance Officers Association (GFOA) top award for our budget process & document.
- As Mayor, I serve as City's Chief Executive Officer, managing 450+ full-time employees and \$115M budget.

##### **High Quality of Life!**

- In 2005, Beaverton was named All-America City Finalist; and 2006 named one of the Top-100 Best Places to Live in America by *Money* magazine.

**"Rob Drake is a dedicated leader who has worked hard to make Beaverton a safe, prosperous and thriving community. Under his leadership Beaverton has retained its livability in a time of rapid change and remains a great place to live and work..."**

*-former Governor John Kitzhaber, MD  
February 28, 2008*

**We support Rob because he has made Beaverton a Great city:** City Councilors Cathy Stanton & Betty Bode; County Commissioners Tom Brian & Dick Schouten; Police Chief David Bishop; Sheriff Rob Gordon, US Senators Ron Wyden (D) & Gordon Smith (R), Congressman David Wu (D), 8 Beaverton Neighborhood Association Committee (NAC) Chairs, Oregon League of Conservation Voters (OLCV), Tualatin Valley Fire Fighters Union.

[www.drakeformayor.com](http://www.drakeformayor.com)

Paid for, authorized by Friends to RE-ELECT ROB DRAKE, MAYOR, 10764 S.W. Heron Circle, Beaverton, OR 97007  
Donald F. Walton, Treasurer

*(This information furnished by Friends to Re-Elect Rob Drake, Mayor)*

The above information has not been verified for accuracy by the county.



## CITY OF BEAVERTON

## Council, Position 3



**Jason M.  
Ridge  
(Nonpartisan)**

**OCCUPATION:** Director of Account Development - PMSI: Portland

**OCCUPATIONAL BACKGROUND:** Director of Marketing Services - PMSI: Portland; Senior Account Manager - Via Training; Senior Account Manager - Black & White Design; Senior Program Manager - Oracle; Program Manager - T/Maker

Company; 14-years of marketing and communications experience

**EDUCATIONAL BACKGROUND:** University of Phoenix, San Jose, CA – Business Management; De Anza College, Cupertino, CA

**PRIOR GOVERNMENTAL EXPERIENCE:** BDR - Beaverton Board of Design Review, 2006 - Present; President, Murray Ridge Home Owner's Association, 2004 - 2007

**Experience Perspective Change**

As your candidate for Beaverton City Council Position 3, I'll bring new perspectives to your City. What's that mean? I believe my background, my experience, and my stage in life provides me a perspective that has been absent from the Council for several years. I believe your City Council should mirror the population of the City it serves...with perspectives that understand the needs and challenges of all Beaverton residents. Only by having city councilors, each with unique experience, can we create a well-rounded, successful council. It's vital to have councilors who are experiencing and can directly understand your challenges, from your perspective, day in and day out, right now. That's perspective change. That's new direction. That's what I offer.

**What I Believe**

We live in a beautiful city that's growing. We must:

- Support, attract, and promote local business and our local economy
- Balance reasonable growth with the protection of our environment
- Protect and expand the livability of our communities within the city
- Focus on improvement before expansion
- Build and improve the infrastructure to support our growth
- Help ensure our educational system and services are second to none
- Act in a fiscally responsible, transparent, honest manner
- Work with an "open door" policy to policy decisions/discussions
- Approach every city issue or idea with an open mind, and respond promptly
- Treat every person as a neighbor
- Speak to improve, inspire, and motivate; not to criticize, demote, or demoralize

*(This information furnished by Jason M. Ridge)*

The above information has not been verified for accuracy by the county.

## Council, Position 3



**Cathy  
Stanton  
(Nonpartisan)**

**OCCUPATION:** Beaverton City Councilor

**OCCUPATIONAL BACKGROUND:** 25 years of business and community involvement. Provided import/export documentation assistance to companies, acted as Customs Broker and Freight Forwarder for Edward Jones Co, Portland. Current Beaverton City

Councilor, 1994-Present.

**EDUCATIONAL BACKGROUND:** B.A. History, California State University, Chico, 1971; Teacher's Credential, Secondary Education, 1972

**PRIOR GOVERNMENTAL EXPERIENCE:** Beaverton City Councilor, January 1994-Present. Prior Greenway NAC Chair. Organized Fanno Creek Clean-up 1988-1991 Member Washington County Capital Projects Committee 1994-1996, Chair, Beaverton Traffic Commission 1993-1994, Member, Transportation Update Committee 1987-1988.

**Community Involvement:** Chaired Beaverton Boys and Girls Clubs. Pushed for passage of 25 MPH Speed limit in residential areas. Campaigned for successful passage of Photo Radar legislation for Beaverton. Current member, Police Activity League (PAL) Advisory Board. Council liaison to Beaverton Library Board, 1993-1995. Beaverton library volunteer 2000-present. Current Board Member, Good Neighbor Center.

My long, continuing involvement in neighborhood projects and Beaverton city government provides deep awareness of the issues facing Beaverton residents: crime and gangs, traffic congestion and transportation issues, growth and livability concerns, insuring a viable business climate, adequate school funding and construction, improving downtown, and maintaining infrastructure and inter-governmental cooperation, to name a few. On the other hand, I believe Beaverton is one of the state's most livable and citizen-friendly cities. We enjoy great neighbors with great civic spirit, and a wonderful quality of life overall.

I believe that with the shrinking availability of funding and the challenges before us, we will all need to work together more closely to solve problems. This is a challenge I accept. I wish to continue to make our community one of the most livable. I believe I have the experience and dedication to do this work for you.

I thank you for the opportunity to serve you, and request your continued support and vote.

Cathy Stanton, Beaverton City Councilor  
[www.CathyStantonForBeaverton.com](http://www.CathyStantonForBeaverton.com)

*(This information furnished by Stanton Re-Election Committee)*

The above information has not been verified for accuracy by the county.

# CITY OF BEAVERTON

## Council, Position 4



### Catherine Arnold (Nonpartisan)

**OCCUPATION:** Marketing Associate /  
Civic Volunteer

**OCCUPATIONAL BACKGROUND:**  
Micro Power Electronics, Marketing  
Associate; NASA Johnson Space Center,  
Budget and Schedule Analyst; Precision  
Castparts, Manufacturing Production  
Planner; Business Information Systems

Consultant. Volunteer work with State, County, Metro, and City government, Beaverton Chamber of Commerce and nonprofits including Habitat for Humanity, Girl Scouts, Loaves and Fishes, Domestic Violence Center, Centro Cultural.

**EDUCATIONAL BACKGROUND:** Master's, summa cum laude, Finance, Texas A&M; Bachelor's, magna cum laude, Economics, Texas A&M.

**PRIOR GOVERNMENTAL EXPERIENCE:** Mediator for Multnomah County Small Claims Court, Washington County Truancy Court and Beaverton Dispute Resolution Center; Chamber of Commerce Leadership Beaverton Board and Business Advocacy Council; Senior Citizens Advisory Committee, Committee for Citizen Involvement, Citizens with Disabilities Advisory Committee, Social Service Funding Committee; Metro Brownfields Taskforce; Metro Technical Advisory Committee, Tualatin Valley Fire and Rescue Citizen's Academy, Beaverton Police Citizen's Academy.

**FROM CATHERINE:** I would like to thank the Citizens of Beaverton for electing me in 2004 and for supporting me in this current race. Governing is necessary but not easy. We need to make the best decisions possible for our community and there are always competing views. It is in listening to those views that I find the best solutions. Please keep sharing them with me. Participate in our government with me. It takes many eyes to make a good community! I'll be there with you, working with our future in mind.

#### **ENDORSEMENTS:**

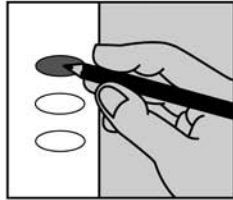
Fellow City Councilors: Cathy Stanton, Dennis Doyle, Bruce S. Dalrymple  
Planning Commissioners: Marc San Soucie, Scott Winter  
Jennifer Nye, Board of Design Review  
Jolene Guptill, Senior Citizens Advisory Committee Chairman  
Jim Persey, Greenway NAC Chairman  
Christopher Redmond, Vose NAC Chairman  
Paul M. Brown, Vice President – Finance, Micro Power Electronics, Inc.  
George Kyler, V.P. Business Services, Rivermark Community Credit Union  
Gary Carlson, Law firm of Gary Carlson and Associates  
John Shields – President, Beaverton Police Association  
Oregon League of Conservation Voters  
My son, Michael Arnold, Senior at Aloha High School, voting for the first time

**VOTE CATHERINE ARNOLD!**  
[www.electcatherine.com](http://www.electcatherine.com)

*(This information furnished by Catherine Arnold)*

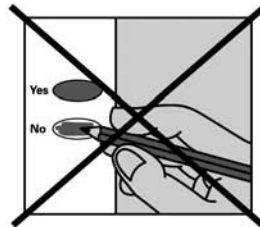
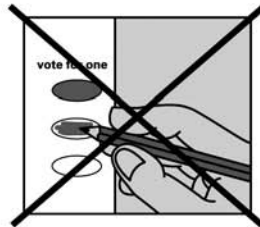
## check your ballot!

Make sure you have completely filled in the ovals next to your choices.



If you vote for more candidates than allowed, or if you vote **both** Yes **and** No on a measure, it is called an overvote.

Your vote **will not count** for that candidate or measure.



You do not have to vote on all contests. Those you do vote on will still count.

Contact County Elections to request a replacement ballot if:

- you make a mistake
- your ballot is damaged or spoiled
- you lose your ballot

or for any other reason.

**call 1 866 ORE VOTE/673 8683**  
*se habla espanol*

**visit [www.oregonvotes.org](http://www.oregonvotes.org)**

**tty 1 866 350 0596**  
*for the hearing impaired*

# CITY OF PORTLAND

## Mayor



### Sam Adams (Nonpartisan)

**OCCUPATION:** City Commissioner

**OCCUPATIONAL BACKGROUND:** Public servant; laborer/carpenter; food service

**EDUCATIONAL BACKGROUND:** Portland State; University of Oregon B.A.

**PRIOR GOVERNMENTAL EXPERIENCE:** Chief of Staff, Mayor Vera Katz; Staff, Congressman Peter DeFazio; Precinct Person, Democratic Party

#### **SAM ADAMS FOR MAYOR** Let's Move Portland Forward, Again!

**"Sam Adams will bring the new energy, integrity and independence we need to shake up the mayor's office."**

**Governor John Kitzhaber**

- Portland's teachers and Stand For Children endorse Sam because he helped keep Portland school doors open, complete the school year and protect class size.

As Mayor, Sam will establish an **endowment fund to help more low income students go to college and job training so kids will stay in school.**

**"A Prosperity Alliance being advocated by Adams would...steer students... toward the most suitable job training..." *Portland Tribune, Mar 4, 2008***

- We can trust Sam to protect our neighborhoods, our environment and our independent small businesses.

**Sam opposed the "Strong Mayor" charter change. He cut taxes on small businesses to keep Portland competitive and created the "Green Streets" plan.**

That's why Sam is endorsed by leaders of **every neighborhood business district**, unions representing **thousands of Portland working families** and the **Oregon League of Conservation Voters.**

- Sam will reduce crime and make MAX safer by having the city and county jointly budget law enforcement resources to increase efficiency.

**Sam will bring back the anti-car theft and anti-gang street officers** the current mayor eliminated.

- Sam fought the lobbyists to bring ethics back to City Hall by requiring them to disclose which special interests are paying them to influence the city council.

**"Adams is right to push for transparency." *Oregonian 1/15/05***

Sam will keep special interest influence out of the Mayor's Office and do what's right for Portlanders.

#### **SAM ADAMS FOR MAYOR** Because Portland belongs to all of us.

See why Governor John Kitzhaber, Governor Barbara Roberts, Vera Katz and thousands of others say, "I'm with Sam!" at:

[www.samforpdx.com](http://www.samforpdx.com)

*(This information furnished by Sam Adams for Mayor Committee)*

The above information has not been verified for accuracy by the county.

## Mayor



### Sho Dozono (Nonpartisan)

**OCCUPATION:** President, Azumano Travel

**OCCUPATIONAL BACKGROUND:** Teacher/Coach, Grant High School; U.S. Army

**EDUCATIONAL BACKGROUND:** B.A. UW; M.A. Education, PSU

**PRIOR GOVERNMENTAL EXPERIENCE:** Metropolitan Human Relations Commission, Governor's Task Force on Equality, Multnomah County Task Force on Aging

**Why did 4,000 Portlanders sign Sho's petitions for Mayor?**

**Hands-On Community Leader Would Change City Hall**

People call Sho "Mr. Portland" because of his lifelong commitment to Portland. Honored with The Spirit of Portland and Governor's Freedom Awards, Sho energizes his fellow Portlanders to tackle any challenge – like the Flight for Freedom post-9/11 and New Orleans mission post-Hurricane Katrina. A natural leader, Sho cares about results, not claiming credit. Dozens have recognized his leadership including the environmental group SOLV, Basic Rights Oregon, and the Cascade AIDS Project.

**Strengthening the Economy, Creating Local Jobs**

A successful business owner employing hundreds, Sho helped create good-paying jobs and boosted the local economy through his work as a Portland Port Commissioner, on Oregon's International Trade Commission, and in many other roles. He'll put his expertise to work for Portland's economy.

**Spending City Money Wisely, Demanding Accountability From Government**

"Sho is the responsible leader that Portland needs - with an uncertain economic future Sho will make sure that Portland's core services are covered. Sho's inclusive style will ensure all the voices of Portlanders will be heard." - Mayor Tom Potter

**Delivering Results for Portland's Schools**

"Sho brilliantly focuses on real challenges, finding solutions, and getting results, while engaging citizens and community organizations. Sho's commitment to public schools is lifelong. Sho attended Buckman Elementary is Southeast and graduated from Cleveland High. His five children attended Portland's schools. Sho taught and coached at Grant High School before becoming a successful business leader. He spearheaded the historic 1996 March for Our Schools, bringing out 30,000 Portlanders and raising over 11 million dollars to save local teaching jobs. Sho would make a terrific Mayor." - Cynthia Guyer, public school parent, founding executive director, Portland Schools Foundation

**Read our positive message at [www.shoformayor.com](http://www.shoformayor.com)**

*(This information furnished by Sho Dozono for Mayor)*

The above information has not been verified for accuracy by the county.

## CITY OF PORTLAND

## Commissioner, Position 2



**Nick  
Fish  
(Nonpartisan)**

**OCCUPATION:** Civil rights attorney; host, Outlook Portland

**OCCUPATIONAL BACKGROUND:** Defending employees against illegal firing and discrimination; helping small businesses and non-profits succeed

**EDUCATIONAL BACKGROUND:** Northeastern Law School; Harvard College

**PRIOR GOVERNMENT EXPERIENCE:** Portland Public Schools Childcare Task Force; Vice-Chair, Housing Authority of Portland; Multnomah County Task Force on Vital Aging; Oregon Cultural Trust; legislative aide, Congressman Barney Frank

**Personal:** Nick, Patricia and their two children live in the Grant Park neighborhood.

**Nick Fish: A New Voice at City Hall**

"Nick Fish will bring his values of **social justice** and **environmental stewardship** plus an outstanding record of community service to our City Council. I am proud to endorse him."—**Governor Barbara Roberts**

**Nick Fish: Opening City Government to Everyone**

Nick has been shining a light on city government, as the host of a weekly public affairs program.

On City Council, Nick will fight for stronger "**sunshine laws**" -- making it easier for the public to see how City Hall spends money and makes decisions.

**Nick Fish: Progressive Leadership**

- Helped secure \$35 million to revitalize North Portland affordable housing.
- Led coalition to save Portland Women's Crisis Line.
- Raised tens of thousands of dollars for scholarships at PSU.
- Worked on plan to create new opportunities for older adults.
- Board member, Oregon League of Minority Voters.

**Nick Fish: A Vision for the Future**

The **Portland Association of Teachers** and **Stand for Children** endorse Nick because he will open up opportunities for every child by supporting investments in smaller classes and closing the achievement gap.

Nick is a champion of neighborhood small businesses and will work to create sustainable family-wage jobs that benefit our city and environment.

**Community Endorsements:**

OR State Council for Retired Citizens  
AFSCME Local 189  
Commissioner Randy Leonard  
Gretchen Kafoury  
Teamsters Joint Council 37

Multnomah County Chair Ted Wheeler  
Senator Avel Gordly  
Commissioner Jeff Cogen  
Metro President David Bragdon  
State Representative Tina Kotek

Treasurer Randall Edwards  
NARAL Pro-Choice Oregon (Green Light)  
Basic Rights Oregon Equality PAC (Green Light)

[www.Nickfish2008.com](http://www.Nickfish2008.com)

*(This information furnished by Nick Fish for City Council)*

The above information has not been verified for accuracy by the county.

## Commissioner, Position 2



**Jim  
Midaugh  
(Nonpartisan)**

**OCCUPATION:** Chief of Staff, Commissioner Erik Sten

**OCCUPATIONAL BACKGROUND:** Managed public and private environmental programs; served as communications director and press secretary for government and non-profit organizations.

organizations.

**EDUCATIONAL BACKGROUND:** B.S. Journalism, University of Oregon

**PRIOR GOVERNMENT EXPERIENCE:** Columbia River Gorge Commission, Kerns Neighborhood Association Co-Chair

**The Clear Choice for ALL of Portland**

**For our schools:**

"As a parent and school volunteer, Jim's been an advocate for school funding and education issues. Jim's progressive grassroots activism with roots in our community will help make him a strong champion for Stand for Children issues." (Rachel Langford, Stand for Children)

**For our neighborhoods:**

"Jim got City Hall to pay attention to our neighborhood. He fought for us and connected us with the right people, agencies and resources to protect our livability." (Dawn Rasmussen, Madison South neighborhood activist)

**For our clean air and water:**

"Jim Midaugh has been a champion for our environment, from river restoration to renewable energy to pesticide-free parks. There is no better choice for Portland City Council." (Oregon League of Conservation Voters)

Jim's been delivering for Portland for 15 years:

- A community leader who's earned a reputation for honesty, accountability and action, Jim is a former co-chair of his neighborhood association.
- A problem solver and consensus builder, Jim brought government and business together to cut through regulatory red tape.
- Jim knows his way around City Hall, and will deliver for us starting Day One.
- A money saver, he helped find over \$1 million in savings in city programs

Jim has a vision for our city and our future:

- Keeping our neighborhoods safe, vibrant and healthy by investing in schools, parks, police and affordable housing for families.
- Making sure new development enhances our quality of life and protects our natural resources.
- Ensuring access to city services for ALL Portlanders, and keeping close watch on the bottom line.

That's why Jim's been endorsed by Peter DeFazio, Commissioner Erik Sten, and many more. Visit [www.jimforportland.com](http://www.jimforportland.com) for more information.

*(This information furnished by Jim Midaugh for Portland City Council)*

The above information has not been verified for accuracy by the county.

# CITY OF PORTLAND

## Commissioner, Position 1



**John  
Branam  
(Nonpartisan)**

**OCCUPATION:** Director of Development, Portland Public Schools

**OCCUPATIONAL BACKGROUND:** Non-profit manager; Middle School Teacher; Peace Corps (South Africa)

**EDUCATIONAL BACKGROUND:** University of Oregon School of Law, JD;

Washington and Lee University, B.A.; Corvallis High

**PRIOR GOVERNMENTAL EXPERIENCE:** Chair, Arbor Lodge Neighborhood Association

“JOHN BRANAM is the **one person** in this race who can get things done.” – Tom Kelly, President, Neil Kelly

### John Branam will honor what we love about Portland:

- John works hard for our schools. As Director of Development for PPS, John has raised millions of dollars for our kids. He believes strong schools are the core of neighborhoods and are essential for businesses to locate and stay here.
- As the son of a janitor, John understands the value of a good job. As a community leader, he helped New Seasons Market and Art & Sole locate in North Portland. City Hall must support small businesses and keep our jobs local.
- John wants Portland to be a city that works for everyone.

Unlike other Voter Owned candidates, John Branam collected the majority of his qualifying signatures by visiting neighbors door-to-door. **John is the candidate who listens, and then leads.**

- It's a problem when some Portlanders pay \$600 per square foot to buy a condo, while thousands struggle to afford \$600 per month in rent. We must increase and protect affordable housing in Portland!
- We need to preserve our strong and vibrant neighborhoods where Portlanders can bike, walk and take mass transit to accomplish their daily needs.
- Let's do even more to protect our natural environment and reduce carbon emissions. We must preserve our planet for our children.

### John Branam has the collaborative leadership skills to make Portland work!

A few of John's endorsers: Jay Bloom, Jo Ann Bowman, Marcus Mundy, Virginia Willard, Paul Van Orden, Howard Weiner, Marta Mellinger, Chris Coleman, Michael Long, Maxine Fitzpatrick

Green lights from NARAL and Basic Rights Oregon PAC

Please visit: [www.John4PDX.org](http://www.John4PDX.org)

*(This information furnished by John4PDX)*

The above information has not been verified for accuracy by the county.

## Commissioner, Position 1



**Amanda  
Fritz  
(Nonpartisan)**

**OCCUPATION:** Registered Nurse

**OCCUPATIONAL BACKGROUND:** Seventeen years' active parent-involvement in Portland Public Schools

**EDUCATIONAL BACKGROUND:** BA/MA, Cambridge University

### PRIOR GOVERNMENTAL

**EXPERIENCE:** Portland Planning Commission 1996-2003; Co-founder, Tryon Creek Watershed Council

Community Involvement: Coalition for a Livable Future, Board; Mentor, at-risk teenagers; Volunteer researcher, Audubon Society of Portland; Neighborhood Association land use/parks chair

**“Amanda's knowledge of community, her commitment to citizens' needs, and her strong ethical standards have gained my support”**  
Governor Barbara Roberts

As City Commissioner, Amanda Fritz will:

### Spend Taxpayers' Money Wisely and Stop Expensive Cost Overruns

- Amanda will prioritize funding so **all 95 Portland neighborhoods get their fair share**, including citizens in Washington County.
- She will **toughen standards for City contracts**, so they no longer run 25% over budget before City Council gives oversight.
- She will ask for **more audits of City projects** to ensure efficient use of taxpayers' money.

### Improve Our Local Economy

- Amanda will push for **fair taxes/fees for businesses**, protect high quality industrial jobs, and provide certainty in permit processing.
- She will work to ensure City contracts **employ local workers**.

### Support Our Local Schools

After decades volunteering with troubled kids, trust Amanda to renew and expand the City's Schools, Families, Housing program, supporting local schools and neighborhoods throughout Portland.

### **Amanda Fritz works hard and gets things done for Portlanders:**

- She helped lead the OHSU nurses' strike for living wages that stopped hospitals from laying off nurses and endangering patients' lives.
- She works with community groups pushing for affordable housing and preventing unfair lending practices.
- Amanda is dedicated to keeping our neighborhoods safe and increasing support for community policing.

**“Amanda's approach will provide resources for creating good jobs, building affordable housing, educating children, helping seniors, and keeping our neighborhoods safe.”**

Gretchen Kafoury, Portland City Commissioner 1991-1998

Join us, support Amanda!

**State Representative Mary Nolan  
Former City Commissioner Mike Lindberg**

**Mike Houck                      Ruth Adkins                      Dave Lister  
Alice P. Blatt                      Moshe Lenske                      Lew Frederick**

**Teachers' Voice in Politics/Portland Association of Teachers**

[www.AmandaFritzforCityCouncil.com/supporters](http://www.AmandaFritzforCityCouncil.com/supporters)

*(This information furnished by Amanda for Portland 2008)*

The above information has not been verified for accuracy by the county.

## CITY OF PORTLAND

## Commissioner, Position 1



**Charles  
Lewis  
(Nonpartisan)**

**OCCUPATION:** Non-Profit Executive Director, Small Business Owner, Expectant Father

**OCCUPATIONAL BACKGROUND:** Founder and Executive Director, Ethos Music Center; Owner, Portland Duck Tours; Peace Corps (Congo); Habitat for

Humanity.

**EDUCATIONAL BACKGROUND:** University of Portland, B.A.; Harvard University Kennedy School of Government, M.P.P.

**PRIOR GOVERNMENT EXPERIENCE:** Ombudsman Associate, Mayor Vera Katz; Intern, Senator Mark Hatfield.

**PERSONAL:** Born 1971; Married to Sarah Lewis, Pastor Piedmont Presbyterian.

**CHARLES LEWIS  
Actions Speak Louder Than Words**

"Charles responded to massive budget cuts in our city schools by establishing a nationally recognized music education program - he is a creative can-do leader who is looking out for Portland's children and working families."

- **Cynthia Guyer**, PPS Parent and Founding Executive Director, Portland Schools Foundation

**A LEGACY OF PUBLIC SERVICE**

In 1998, Charles Lewis started Ethos Music Center to bring music education back to underserved youth. Ethos currently serves 2,200 students a year and was twice selected as one of the best after school arts programs in the country by the President's Commission on the Arts and Humanities.

"Charles represents a new generation of leadership for the future of Portland. His work with Ethos demonstrates an unwavering commitment to fiscal and social responsibility."

- **Cheryl Perrin**, Former Senior Vice President, Fred Meyer

- **Making Portland Affordable:** Families are leaving Portland because they can't afford to live here anymore. We need to make serious investments in affordable housing and stop subsidizing "development" that benefits only the wealthy.
- **Getting Back to Basics:** Providing basic services should be the most fundamental role of government. Before we spend millions on projects such as the Tram and South Waterfront, we need to make sure all Portland citizens have access to good roads and safe neighborhoods.
- **Strengthening our Communities:** Charles has an unmatched track record of bringing people together to solve community problems.

"Charles Lewis understands the complexity of keeping Portland affordable and the critical balance between business, family friendly neighborhoods and vibrant schools."

- **Stand For Children**, Endorsement 3/18/08.

**Please visit: [www.CharlesLewis.com](http://www.CharlesLewis.com)**

*(This information furnished by Friends of Charles Lewis)*

The above information has not been verified for accuracy by the county.

## Commissioner, Position 1



**Chris  
Smith  
(Nonpartisan)**

**OCCUPATION:** Internet Technologist, Xerox Corporation, 2000-2008

**OCCUPATIONAL BACKGROUND:** Product Manager, Director of Internet Strategy, Tektronix, 1988-1999

**EDUCATIONAL BACKGROUND:** B.S., Computer & Systems Engineering, Rensselaer Polytechnic Institute, 1982;

MBA, Boston University, 1987

**PRIOR GOVERNMENTAL EXPERIENCE:** Safe, Sound and Green Streets Task Force, 2007-2008; Metro Policy Advisory Committee, 2005-2007; Chair, Portland Streetcar Citizens Advisory Committee, 2003-Present

**Chris Smith: Experienced. Tireless. Effective.**

**EXPERIENCED**

"Chris has been a champion of openness and transparency in government. **If you want someone who can make government more accountable, elect someone who has actually done it.**"

-**Norma Paulus**, former Secretary of State

"**Chris knows transportation and land use.** He has the experience to plan for 300,000 new residents in Portland over the next 20 years while maintaining our city's character and livability."

-**Michael Powell**

**TIRELESS**

"**Smith works his tail off...**" (*The Oregonian*, 8/7/2006)

"... [Chris] seems to be at more local public meetings than the people who are paid to be there." (*Portland Tribune*, 2/10/2007)

**EFFECTIVE**

**Chris Smith gets stuff done:**

- **smarter transportation planning**
- **better land-use policy**
- **extending Portland Streetcar to more neighborhoods**
- **City Hall lobbyist regulation**
- **public financing of elections**

"Only Chris Smith has the public service record to back up what he says he'll do. If he can accomplish this much as a volunteer, just imagine what he'll do as a City Commissioner."

-**Rick Michaelson**, former Planning Commissioner

"I'm just a huge fan of his. I think Chris is actually doing the work that most Portlanders want done and don't have the interest or time to do themselves."

-City Commissioner **Erik Sten** (*Portland Tribune*, 2/10/2007)

**Endorsed by:**

Bike. Walk. Vote.  
Norma Paulus, former Secretary of State;  
Margaret D. Strachan, former City Commissioner;  
Robert Liberty, Metro Councilor;  
Charlie Ringo and Jane Cease, former State Senators;  
Mitch Greenlick, State Representative;  
Rick Michaelson and Ingrid Stevens, former Planning Commissioners;  
Mike Burton, former Metro Executive;  
Michael Powell and Scott Bricker.

Chris Smith is a Certified Campaign Finance Fund Candidate.

**[www.citizensmith.us](http://www.citizensmith.us)**

*(This information furnished by Citizen Smith for Portland City Council)*

The above information has not been verified for accuracy by the county.

# CITY OF PORTLAND

## Commissioner, Position 4



**Randy  
Leonard  
(Nonpartisan)**

**OCCUPATION:** Portland City  
Commissioner

**OCCUPATIONAL BACKGROUND:**  
Portland Firefighter, 1978-2002;  
President, Portland Firefighters  
Association, 1986-1998

**EDUCATIONAL BACKGROUND:** BS,

History, Portland State; Grant H.S.

**PRIOR GOVERNMENT EXPERIENCE:** State Legislator, 1993-2002

**"Leonard has won points for improving customer service in the development services and water bureaus, and for championing the kind of livability issues that resonate with Portlanders..." *Willamette Week*, 12/26/07**

**Randy Leonard delivers results.**

### **Fighting Crime with "Project 57"**

Randy spearheaded "Project 57" which opened new space in our jails and combines dedicated police resources with drug and alcohol treatment for Portland's most dangerous offenders. In the first 24 months of the program, repeat offenses by Portland's top 300 criminals **dropped by 71%**.

### **Demanding Accountable Government**

For years the Portland Development Commission (PDC) avoided accountability for its use of taxpayer dollars by hiding behind an antiquated City Charter provision. They even challenged the City Auditor's authority to review their books.

Randy pushed for a ballot measure that makes the PDC accountable to the City Council under Portland's Charter. In 2007, Portlanders overwhelmingly passed the measure.

### **Fighting for the things Portlanders care about**

- Recognizing the need for new parks in our city, Randy made open spaces owned by the Water Bureau accessible to the public. Today, there are 4 new "Hydroparks" open throughout Portland and several more planned.
- Randy wrote the law that gives Portland neighborhoods the tools they need to deal with misbehaving liquor establishments.
- Randy took on big oil companies to make Portland the first city in the country to require a 5% biodiesel blend in all diesel fuel.

**"On the City Council, Leonard has carved out a niche as the blue collar voice of Portland's geographic fringes." *Oregonian*, 06/18/07**

Randy's endorsements include:

- Oregon League of Conservation Voters
- Bike. Walk. Vote.
- Stand for Children
- Portland Association of Teachers
- Laborers' Local #483

"Green Light" from **Basic Rights Oregon PAC**

**Re-Elect Randy Leonard**  
**[commleonard@aol.com](mailto:commleonard@aol.com)**  
**[www.randyforportland.com](http://www.randyforportland.com)**

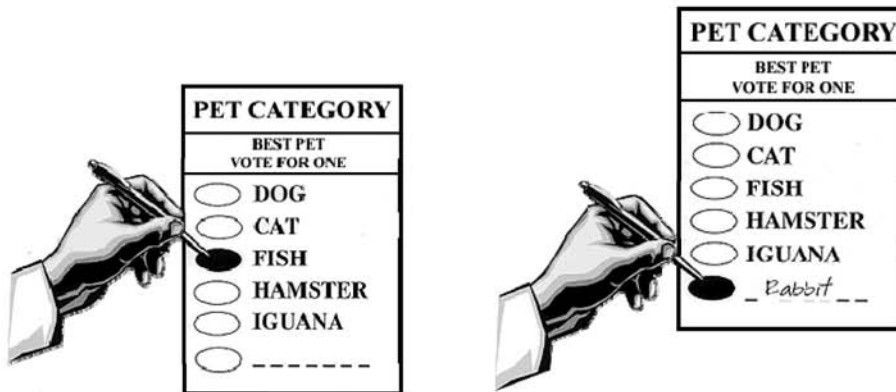
*(This information furnished by Friends of Randy Leonard)*

The above information has not been verified for accuracy by the county.



## How To Vote Your Ballot:

1. To vote you must completely fill in the oval ( ● ) with a black or blue pen or a standard pencil.
2. To Write in a name completely fill in the oval ( ● ) to the left of the dotted line ( \_ \_ \_ \_ \_ ) and write in the name on the dotted line.
3. The ballot may have contests printed on front and back. Remember to vote both sides.
4. If you make a mistake, or your ballot is damaged, or in need of assistance, you may contact the Elections Office for a new one.



## Cómo votar su Boleta Electoral:

1. Para votar usted deberá llenar completamente el óvalo ( ● ) que está a la izquierda de su decision. Use una pluma de tinta o **azúl**, o un **lápiz**.
2. Para someter un nombre, llene completamente el óvalo ( ● ) que está a la izquierda de la línea vacía. ( \_ \_ \_ \_ \_ ) Use una pluma de tinta o **azúl**, o un **lápiz** para escribir un nombre.
3. La Boleta Electoral tal vez tenga información en los dos lados (frente y posterior). **Recuerde**, vote ambos lados.
4. Si hace un error, o su boleta es dañada, o necesita ayuda, puede llamar a la oficina de Elecciones para solicitar una nueva.



# ENHANCED SHERIFF'S PATROL DISTRICT (EPSD)

## Measure No. 34-148

### BALLOT TITLE

#### REPLACEMENT LOCAL OPTION LEVY TO MAINTAIN ENHANCED POLICE RESPONSE

**QUESTION:** Shall Patrol District levy \$9,500,000 per year for five years, beginning 2008-2009, for operating current level of police services?

This measure may cause property taxes to increase more than three percent.

**SUMMARY:** This measure may be passed only at an election with at least a 50 percent voter turnout.

Voters approved the Enhanced Sheriff's Patrol District (EPSD) in 1987 and local option levies since then to provide increased law enforcement services for residents in the urbanized areas outside of cities in Washington County.

This levy would maintain current service levels within the Patrol District by replacing a local option levy expiring this June. Renewing this local option levy would pay for 57 officers and 7 civilians to:

- Ensure an enhanced level of police emergency response for residents of the EPSD, even with projected population growth
- Maintain a police presence that is approximately double that of the rural area of Washington County
- Help fight problems in the Patrol District associated with gangs
- Provide funds for investigating major crimes occurring within the EPSD, including homicide, assault, burglary and domestic violence.

The levy would raise a total of \$47,500,000.00 over five years. The average estimated tax rate would be 63 cents per \$1,000 assessed value. A \$200,000 assessed value home (not market value) would pay an annual average of \$126. This would average \$28 more per year than the current local option levy.

The estimated tax cost for this measure is an ESTIMATE ONLY based on the best information available from the County assessor at the time of the estimates.

### EXPLANATORY STATEMENT

#### What is the Enhanced Sheriff's Patrol District?

Voters established the Enhanced Sheriff's Patrol District (EPSD) in 1987 to provide an enhanced level of police response for residents of the urban area of Washington County outside of cities. With funding from a local option levy, the Washington County Sheriff's Office has provided these law enforcement services focused inside the urban unincorporated area. Renewing this local option levy would continue to fund a police presence that is approximately double that of the rural area of Washington County.

#### Why is this replacement levy proposed?

To replace an expiring local option levy EPSD voters approved so that the urbanized areas outside of city boundaries would continue to receive the current level of policing services, even with projected population growth.

#### Who is served by the EPSD?

If you received an EPSD ballot, the EPSD serves you. Washington County communities outside cities and inside the urban growth boundary are served, including: Aloha, Bethany, Bull Mountain, Bonnie Slope, Cedar Hills, Cedar Mill, Claremont, Cooper Mountain, Garden Home, Metzger, Oak Hills, Orenco, Reedville, Rock Creek, Sommerset, Terra Linda, West Slope and the urban areas outside Hillsboro, Cornelius and Forest Grove.

#### How is the EPSD funded currently?

By two property taxes:

- A permanent tax rate (64 cents per \$1,000 assessed value) funds approximately 60% of District services
- A five-year, voter-approved levy (averaging 49 cents per \$1,000 assessed value) that expires this June funds the remainder. This is the portion voters are being asked to replace.

#### How would these funds be used to provide services in the EPSD?

A renewed local option levy would pay for 57 officers and 7 civilians to maintain a police presence in the District that is approximately double that of the county's rural area. Police emergency response is one of the primary services provided through the Patrol District. Law enforcement services include investigating major crimes inside the urban unincorporated area, such as homicide, assault, burglary and domestic violence. Levy funds also help fight gang-related problems in the District.

#### What impact would this EPSD levy have on a homeowner's property tax?

The replacement levy is estimated to average 63 cents per \$1,000 assessed value. It would replace a levy with an average tax rate of 49 cents per \$1,000 assessed value. If approved, owners of a home with an assessed value of \$200,000 would pay an annual average of \$126. This averages \$28 more per year than the current local option levy.

#### What happens if a replacement EPSD levy is not approved?

The local option levy that expires this year provides about 40% of the funding for the Patrol District. Although law enforcement would remain a priority, significant reductions in patrol services would be likely, beginning in 2009. Property taxes on a home with an assessed value of \$200,000 would decrease by approximately \$98 this year if the current levy expires without a replacement.

Submitted by:  
Dan Olsen  
County Counsel

**NO ARGUMENTS AGAINST  
THIS MEASURE WERE FILED.**

## ENHANCED SHERIFF'S PATROL DISTRICT (EPSD)

### Measure No. 34-148

#### ARGUMENT FOR

As citizens of our community and your front line public safety responders, we ask you to join us in supporting the Enhanced Sheriff's Patrol District Levy by voting **YES!** This levy will ensure an enhanced level of police emergency response for residents of the ESPD.

We want Washington County to continue to be a place people want to live and businesses want to flourish.

Countywide we recognize the importance of holding criminals in our county jail, supervision by parole and probation officers, and combating drugs which create family tragedy in all of our communities. Our community's livability is intimately tied to the effectiveness and efficiency of our public safety resources. This levy will help maintain a police presence that is approximately double that of the rural areas of the County.

For your public safety resources to be used at their maximum efficiency and effectiveness, each part must be healthy. From the investigators who respond to your residence, to the forensic analysts who process evidence to the corrections officers who safely monitor offenders, to the probation and parole officers who supervise individuals, and the prosecutors who ensure the criminals are legally held accountable for their actions—each part of the system is vital to one another.

We see resources at work for our communities' everyday through inter-agency teams fighting drugs such as methamphetamine, fraud and identity theft, as well as gangs through effective and early intervention. Your public safety professionals take pride in all they do for the community and want to continue their path of success. This levy will help provide the funds for the investigation of major crimes occurring within the ESPD, including homicide, assault and burglary.

Washington County is on the road to increased livability and we want you, with us, to be part of the plan that ensures continued vitality of our community and effective and efficient use of your public safety resources.

Remember to vote **YES** on the **ESPD Levy!**

This information furnished by:  
Murray Rau - President  
Washington County Police Officers Association

The printing of this argument does not constitute an endorsement by Washington County, nor does the county warrant the accuracy or truth of any statement made in the argument.

#### ARGUMENT FOR

##### **SHERIFF ROB GORDON SUPPORTS ESPD LEVY RENEWAL**

Your Sheriff's Office is the primary responder to 9-1-1 calls outside of cities in Washington County, and I can tell you that deputies are working hard every day to give you the public safety services you deserve. **If you received this voter's pamphlet, this levy funds deputies that answer emergency calls and investigate crimes in your neighborhood!**

*Renewing* the Enhanced Sheriff's Patrol District levy enables your Sheriff's Office to investigate **major crimes** in your area such as homicide, burglary, and domestic violence. It also funds deputies who work to combat problems associated with **methamphetamine**, other **drug crimes**, and **gang activity**.

This district also demands law enforcement that addresses quality of life concerns. This includes nuisance properties, noise complaints, and property theft or damage; the levy also funds school resource officers and crime prevention services. **Your YES vote will ensure a strong law enforcement presence in unincorporated urban Washington County - approximately double that of the county's rural areas.**

As Washington County grows by about **1,000 new residents per month**, your Sheriff's Office consistently pushes to meet the public safety needs of areas like Bull Mountain, Rock Creek, Aloha, Cooper Mountain, Reedville, Bethany, and many others. **Your YES vote will ensure your area continues to receive a consistent level of policing services even with projected population growth.**

Citizens recognized the impact of growth in these unincorporated areas and passed the first ESPD local option levy in 1987. A permanent tax rate provides 60% of ESPD services; the proposed levy renewal provides the remaining 40%. The first levy passed by a 61% margin and it has been continuously renewed since its inception. **Vote YES to continue your District's commitment to enhanced public safety in the ESPD.**

Passage of this levy **requires a majority turnout of registered voters**, and a majority of them voting yes. **Please encourage your neighbors, family, and friends in the ESPD to turn in their ballots!**

This information furnished by:  
Sheriff Rob Gordon  
Washington County Sheriff's Office

The printing of this argument does not constitute an endorsement by Washington County, nor does the county warrant the accuracy or truth of any statement made in the argument.

# ENHANCED SHERIFF'S PATROL DISTRICT (EPSD)

## Measure No. 34-148

### ARGUMENT FOR

The **Citizens for a Safe Community** asks you for a vote of **"YES"** on **34-148**. This is a continuation of a levy that has existed since 1987. Since the last renewal of this levy, there has been an increase in the costs of equipment and wages and an increase in population. During the life of this renewal there will be continuing increases in these costs and in population. This renewal includes an additional 19 Deputies over its life to keep up with growth. Considering all these increases, the annual increase of \$28 per \$200,000 assessed valuation is surprisingly low.

Among those who have looked into **Enhanced Sheriff's Patrol District (EPSD)** levy, **34-148**, and have formally endorsed it are:

**Washington County Democratic Central Committee Executive Board**  
**Washington County Republican Central Committee**  
**Washington County Business Council**  
**Beaverton Area Chamber of Commerce**  
**Thomas W. Kohl, Washington County Presiding Judge**  
**Bob Hermann, Washington County District Attorney**  
**Rob Gordon, Washington County Sheriff**  
**Rob Drake, Mayor of Beaverton**  
**Lou Ogden, Mayor of Tualatin**  
**Tom Hughes, Mayor of Hillsboro**  
**William Bash, Mayor of Cornelius**

There are approximately 220,000 citizens whose homes are in the **EPSD** area and many others who work in the **EPSD**. This levy will allow your Sheriff's Office to continue to provide patrol and other law enforcement services at approximately the same level that is provided within city limits, even with the continuing growth of Washington County at the rate of about 1,000 new residents per month. The amount of increase is about 2/3 the cost of one average coffee latte per month per household.

We are thankful that Oregon has a violent crime rate about 1/2 the national average. We are also very thankful that we live here in Washington County where the violent crime rate is about 1/2 that of Oregon as a whole. **Citizens for a Safe Community** asks you to continue to support your Sheriff's Office with your vote of **"Yes" on 34-148**.

This information furnished by:  
Dennis Griffiths  
Citizens for a Safe Community

The printing of this argument does not constitute an endorsement by Washington County, nor does the county warrant the accuracy or truth of any statement made in the argument.

# CITY OF CORNELIUS

## Measure No. 34-149

### BALLOT TITLE

#### **CITY OF CORNELIUS HOME RULE CHARTER**

**QUESTION:** Shall the City of Cornelius adopt a new home rule charter?

**SUMMARY:** This measure would replace the current City Charter with a new charter. The City Charter Review Committee and the City Council approved the new charter for submission to City voters.

The Oregon Constitution gives City voters the right to adopt charters. Charters grant legal authority to cities and assign duties to city officials. Cornelius voters adopted the current charter in 1953.

The new charter is based on the 2004 League of Oregon Cities Model Charter. It contains charter provisions unique and important to Cornelius. The proposed charter retains the current form of government with a Mayor and four councilors elected at large to govern the community. The new charter more clearly defines the legal authority of the City Council, defines the roles and responsibilities of the mayor and lists the duties of the city manager. It is much shorter and easier to read than the current charter. The new charter is consistent with state law.

### EXPLANATORY STATEMENT

This measure is a proposed new Home Rule Charter for the City of Cornelius. The new charter would replace the current City Charter adopted by Cornelius voters in 1953. The Charter Review Committee and the City Council approved the new charter for submission to City voters.

The Oregon Constitution gives city voters the right to adopt home rule charters. A charter grants legal authority to a city government. A charter sets the duties for the City Council and Mayor. It also creates the office of City Manager.

The new Cornelius Charter is based on the 2004 League of Oregon Cities model charter. It contains existing charter provisions unique and important to Cornelius. The new charter more clearly defines the legal authority of the City Council, defines the role and responsibilities of the Mayor and lists the duties of the City Manager. It is much shorter and easier to read and use than the current charter. It is consistent with state law.

The Charter Review Committee adapted the model charter to continue current Cornelius charter policies and practices. The Charter Review Committee and the City Council believe the new City of Cornelius Home Rule Charter will better meet the current and future needs of the City.

Submitted by:  
William Bash  
Mayor, City of Cornelius

**NO ARGUMENTS FOR OR AGAINST  
THIS MEASURE WERE FILED.**

# CITY OF LAKE OSWEGO

## Measure No. 3-295

### BALLOT TITLE

#### **LAKE OSWEGO BOND ISSUE FOR WEST END BUILDING REFINANCING**

**QUESTION:** Shall the City issue up to \$20 million in general obligation bonds to refinance the West End Building property purchase?

If the bonds are approved, they will be payable from taxes on property or property ownership that are not subject to the limits of sections 11 and 11b, Article XI of the Oregon Constitution.

**SUMMARY:** This measure may be passed only at an election with at least a 50 percent voter turnout.

On July 7, 2006 the City of Lake Oswego purchased the former Safeco Insurance property at 4101 Kruse Way, Lake Oswego, consisting of 14.08 acres with improvements including an 88,872 square foot office building, now known as the West End Building. The purchase price was \$20 million. The final determination of how the property will be used has not yet occurred. Potential uses could include combined public and private uses. The purchase was made with reserve funds that were replenished through a short term line of credit. This measure authorizes up to \$20 million in general obligation bonds to refinance the purchase of the property to retire the line of credit. The bonds will be payable over a period not to exceed 20 years. If the maximum amount of bonds is issued, it is anticipated that property taxes on a home with the average Lake Oswego assessed value (not real market value or sales price) of approximately \$300,000 would increase by \$105 per year.

A "yes" vote authorizes the City to issue up to \$20 million in general obligation bonds to retire the temporary line of credit and to permanently refinance the purchase of the property.

Submitted by:  
David Powell  
City Attorney

### EXPLANATORY STATEMENT

This measure authorizes the City of Lake Oswego to issue up to \$20 million in general obligation bonds to refinance the purchase of the West End Building property at 4101 Kruse Way, formerly the offices of the Safeco Insurance Company.

On July 7, 2006 the City of Lake Oswego purchased the property for \$20 million. The property consists of 14.08 acres, including an 88,872 square foot building. The purchase was made with reserve funds that were replenished through a short term line of credit. The City is currently making interest-only payments on this short term financing. If the voters approve this ballot measure, the proceeds of the bonds will be used to completely retire the line of credit.

The bonds would be payable over a period not to exceed 20 years. If the maximum amount of bonds is issued, it is anticipated that property taxes on a home with the average Lake Oswego assessed value of approximately \$300,000 would increase by \$105 per year (\$0.35 per thousand). Assessed value is established by the County Tax Assessor and is typically lower than the real market value of property.

The building is currently being used to house Parks and Recreation Department offices and activity rooms. It is also being used for community meetings and events. However, there has not been a final determination of the use of the property. Potential City uses could include the 911 dispatch center, police department facilities, additional library services, and other public offices and recreation facilities. It is also possible that future uses could include a combined public and private use, or some type of partnership between the City and a private entity.

The City Council will adopt a process by June 30, 2008 to receive information and advice from the public as to the appropriate immediate and long term uses for the property.

A vote on this measure does not constitute a vote for or against any particular use of the property.

**NO ARGUMENTS FOR OR AGAINST  
THIS MEASURE WERE FILED.**

# Voter Assistance Team



Look for the above sign at the following locations. It signifies a Voter Assistance Team is on site and available to provide voting assistance.

**Elsie Stuhr Center**

Poplar Room  
5550 SW Hall Blvd., Beaverton  
(503.629.6342)  
Saturday, May 17<sup>th</sup> 10:00-2:00

**North Plains Senior Center**

Office  
31450 NW Commercial St., North Plains  
(503.647.5666)  
Monday, May 19<sup>th</sup> 11:30-3:30

**Forest Grove Senior Center**

South Conference Rooms  
2037 Douglas St., Forest Grove  
(503.357.2021)  
Friday, May 16<sup>th</sup> 10:00-2:00

**Sherwood Senior Center**

Lounge  
21907 SW Sherwood Blvd., Sherwood  
(503.625.5644)  
Friday, May 9<sup>th</sup> 9:00-1:00

**Hillsboro Senior Center**

Computer Room  
750 SE 8<sup>th</sup> Ave., Hillsboro  
(503.648.3823)  
Thursday, May 15<sup>th</sup> 8:30-12:30

**Tigard Senior Center**

Activities Room  
8815 SW O'Mara St., Tigard  
(503.620.4613)  
Tuesday, May 13<sup>th</sup> 12:30-4:30

**Tualatin/Durham Senior Center**

Health Room  
8513 SW Tualatin Rd., Tualatin (503.692.6767)  
Friday, May 9<sup>th</sup> 12:30-4:30

**Assistance provided will not include making voting decisions for the voter.**

**The voter must bring ballot package (ballot, secrecy envelope, and signature envelope).**

Call Washington County Elections at 503.846.5800 or email [VAP@co.washington.or.us](mailto:VAP@co.washington.or.us) if you wish to obtain more information about these services.

# ballot dropsites

## **Ballots must be received by 8pm on Election Day**

---

### **24-hour dropsites**

#### **Public Services Building**

Rear Entrance  
155 N 1st Ave  
(1st and Main)  
Hillsboro

#### **Service Center East Building**

Front Lobby  
3700 SW Murray Blvd  
(Murray and Millikan)  
Beaverton

#### **Banks Library**

111 Market St

#### **Cornelius Library**

1355 N Barlow St

#### **Hillsboro Library**

**Main Branch**  
2850 NE Brookwood Pkwy

#### **Forest Grove**

2102 Pacific Ave  
(Pacific Ave and Ash St)

#### **King City - City Hall**

15300 SW 116th Ave

#### **North Plains City Hall**

31360 NW Commercial

#### **Sherwood City Hall**

22560 SW Pine St

#### **Tigard City Hall**

13125 SW Hall Blvd

#### **Tualatin City Offices**

**Council Building**  
18880 SW Martinazzi Ave

---

### **indoor dropboxes** *(call to confirm hours)*

#### **Beaverton Library**

12375 SW 5th St  
503 644 2197

#### **Cedar Mill Library**

12505 NW Cornell Rd  
503 644 0043

#### **Garden Home Library**

7475 SW Oleson Rd  
503 245 9932

#### **Hillsboro Library**

**Shute Park Branch**  
775 SE 10th Ave  
503 615 6500

#### **West Slope Library**

3678 SW 78th Ave  
503 292 6416

---

### **Washington County Elections**

3700 SW Murray Blvd Suite 101  
Beaverton OR 97005  
503 846 5800  
[www.co.washington.or.us](http://www.co.washington.or.us)

