

Prepared by:



Washington County  
Commission on  
Children & Families

503-846-4539

2007

# Banks



## Banks Community Profile

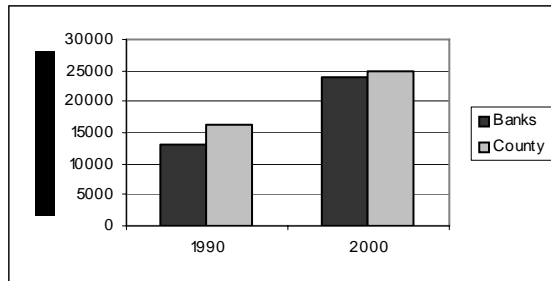
The Banks community has shown tremendous growth in the past decade, and was the fastest growing city in the state during the late 1990's. The City of Banks grew by more than 225% between 1990 and 2000 (from 578 to 1,274), and the area served by the Banks zip code, grew by over 130% (from 3,288 to 4,342).

While whites comprise the largest segment of the Banks community (more than 90%), Latinos and Asian/Pacific Islanders are the largest minority communities, each comprising 2.4% of the population. Asian/Pacific Islanders and Native Americans are the fastest growing minority populations in the area (growing more than 425% and 375% respectively in the 1990s).

More than 29% of the area's residents are children under the age of 18, which is a higher percentage than for the county as a whole (26.8%). A higher proportion of single parents live in the city limits, almost 23% compared to 14% in the zip code.

# Poverty

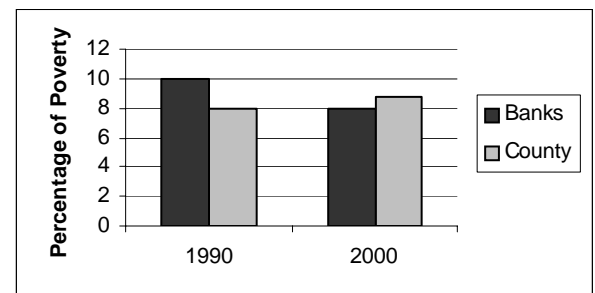
In general, poverty indicators in the Banks area have declined since the 1990's, illustrating that much of the growth in the area has resulted from middle class, professional families moving into the area, and a shift away from the more agriculturally based economy.



Per capita income in Banks has increased dramatically since 1990. In the City of Banks, it has risen from \$8,126 in 1990 to \$21,354 in 2000, an increase in excess of 250%. Similarly, in the Banks area (based on zip code), per capita

income has risen from \$13,029 in 1990 to \$23,854 in 2000 (a 183% increase). During the same period, per capita income county-wide rose by just over 150%, from \$16,351 to \$24,969.

Other poverty indicators show similar improvement in the Banks area. Poverty rates among single parent households in the Banks area have declined in the past decade, from more than 35% in 1990 to just over 16% in 2000, which is slightly below the poverty rate for single parents in the county (18.5% in 2000). Poverty among children under the age of 18 went from almost 10% in 1990 to just under 8% in 2000 in the Banks zip code, while in the city limits child poverty declined from almost 17% to just over 2% in the same period. During this same period, poverty in the county showed an increase, from 7.9% in 1990 to 8.8% in 2000.



Free and reduced lunch rates are another indicator of poverty, and this indicator suggests that poverty may be on the increase in Banks. The percentage of students eligible grew from 14.8% during the 2000-01 school year to 17.7% in the 2006-07 school year. An increase of almost 20%. This compares to a 28% increase county wide in students eligible in the same period.

# Education

Consistent with population trends suggesting significant growth in middle class, professional families in the Banks area educational attainment levels have also increased significantly over the past decade.

In 1990, almost a quarter of adults (individuals over age 25) in Banks had not completed high school, and by 2000 only 11% of adults hadn't completed high school.

There was also a significant increase in the percentage of adults who had completed college; in 1990 just over 10% had a college degree, and by 2000 this had increased to almost 22%. While high school completion and college completion rates among the county-wide adult population also increased, the increases were not as large as in the Banks area.



High school completion rates among adults increased from 88.2% in 1990 to 88.9% in 2000, compared to 76% to 88.9% for the county as a whole, and college completion rates increased from 29.8% to 34.5%, although college completion rates for Banks continue to be lower than for the county as a whole.

School dropout rates for high school students have shown consistent improvement since the late 1990's, when dropout data began being collected consistently. During the 1997-98 school year, Banks had a drop out rate of 7.38, compared to a county rate of 6.68 and a state rate of 6.88. By the 2005-06 school year, the Banks rate had dropped to 1.25, with the county rate dropping to 3.4 and the state rate to 4.1.

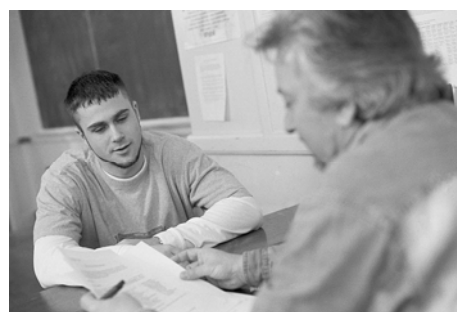
Census data suggests that the drop-out rate may be higher. In 2000, among 16 to 19 year olds in Banks, 5.4% were not enrolled in school and had not graduated. Among White youth 16 - 19, in 2000, 4.2% were not enrolled and had not graduated, and among Latino youth, 14.2% were not enrolled and had not graduated from high school.

# Education Cont.

Student performance data for Banks school children have also shown gains in recent years, with Banks students showing improvement, similar to students statewide.

In the third grade, the percentage of Banks students meeting standards in reading went from 80% in the 2001-02 school year to 84% in the 2005-06 school year.

The percentage of Banks students meeting math standards in third grade went from 85% in 2001-02 to 88% in 2005-06.



Statewide, third graders meeting reading standards grew from 85% to 90%, and those meeting math standards went from 77% to 88% in the same period.

Among eighth graders, those meeting reading standards in Banks went from 66% to 82% compared to 64% to 68% among eighth graders statewide. Those meeting math standards went from 65% to 68% in Banks and from 56% to 68% statewide in the 2001-02 to 2005-06 time period.

