

SHERWOOD



Sherwood has been the fastest growing community in the County over the past decade and a half. Since 1990 the population of Sherwood has quintupled, from 2,969 in 1990 to an estimated 16,115 in 2006. This compares with a county growth rate of 61% over the same period. The Sherwood area reflects the continued suburbanization of the county from a rural, agricultural based economy to a suburban community with a service and technology based economy.

Similar to the rest of the county, there has also been a shift in the ethnic and racial make up of the area since 1990, when 96% of the population was White. By 2000, the White population as a proportion of the population had declined to 92%, with Latinos and Asian/Pacific Islanders comprising the largest and fastest growing minority populations at 4.3% and 2.1% respectively.

SHERWOOD

Sherwood has a higher proportion of people under the age of 18, 31.4% in 2000, than the county as a whole (25.5%). Of those under 18, a higher proportion of Sherwood residents are under age 9 (64%) than in the county as a whole (58.4%). Sherwood has the highest proportion of children who live in two parent households, at almost 86%, compared to a county average of 80%.



School enrollment data provides additional insights into population growth and changes in the diversity of the community. Sherwood School District has shown the highest growth rate in student enrollments in the county since the 2000-01 school year, at 45% between 2000-01 and 2006-07, while the countywide growth rate in school enrollments was just 13%.

While enrollments of minority students in Sherwood are significantly lower than for the county as a whole, 13% to 37% respectively in 2006-07, there has been significant growth in minority enrollments since the 2000-01 school year, when minority students made up just 8% of the total student population, with the number of minority students almost tripling during that period.

Latinos comprise the largest proportion of minority enrollments, at 6% of total enrollments, with the number of students more than doubling since the 2000-01 school year. Asians represent 4% of school enrollments and showed an 82% growth rate since 2000-01.

Sherwood was one of only two school districts in the county (the other was Banks) which showed an increase of White students in this time period. In Sherwood the growth rate among White students was 37% for the period compared to the overall growth rate of 45%. White students now comprise 87% of Sherwood's enrollments, a decrease from 92% in the 2000-01 school year.

SHERWOOD

Poverty

The per capita income in Sherwood grew significantly in the 1990s, more than doubling, from \$11,337 in 1990 to \$25,793 in 2000. Per capita income for Sherwood was higher than for the county as a whole, where it was \$24,969 in 2000.

The shift from an agricultural community to a suburban community is perhaps most evident in Sherwood; the reduction in the poverty rate is illustrative.



The economic boon does not reach all children and families however. Children who live in single parent households are much more likely to live in poverty. 8.9% of all single parents with children under 18 in Sherwood lived in poverty in 2000, while 10.9% of single mothers with children lived in poverty.

Latinos are also significantly more likely to live in poverty. In 2000, 9.2% of all Latinos in Sherwood lived in poverty, and almost 20% of Latino children lived in poverty.

Free and reduced lunch rates are another indicator of poverty. In the 2000-01 school year, 8.2% of Sherwood students were eligible for free/reduced lunch; by the 2006-07 school year the percentage of eligible students had grown to 10.9%.

Education

Sherwood area residents have a somewhat higher educational attainment level than county residents as a whole, with just over 94% of residents completing at least high school compared to almost 89% of residents county-wide.

SHERWOOD

In 2000 35.6% of Sherwood residents had a college degree, compared to just under 35% county-wide. This higher educational attainment level is a result of the in-migration which provided for much of Sherwood's population growth in the past decade and a half. In 1990, educational attainment levels were substantially lower, with just under 83% having a high school diploma, and only 16.5% having a college diploma.

While the numbers of minority residents in Sherwood are small, they do show significantly higher educational attainment levels than minority residents countywide. Among Latinos in Sherwood, 81% have a high school diploma, compared to 50% countywide; 28% have college degrees, compared to 11% county-wide (2000 Census).

Among Asians, high school completion rates are comparable between Sherwood residents (86%) and county-wide (88%), as are college graduation rates, which are 50% for Sherwood residents and 49% county-wide (2000 Census).

Test scores at the third and eighth grade are used as measures to determine the general school performance of children and their schools. In the Sherwood School Districts, students out-perform their peers statewide.



SHERWOOD

Third Grade	Sherwood Reading	State Reading	Sherwood Math	State Math
% meeting standard in 2001-02	95%	85%	91%	77%
% meeting standard in 2005-06	>95%	90%	95%	88%
Eighth Grade	Sherwood Reading	State Reading	Sherwood Math	State Math
% meeting standard in 2001-02	87%	64%	75%	56%
% meeting standard in 2005-06	85%	68%	79%	68%

Among minority students, the achievement gap between Latino students and their White and Asian peers is evident. In the 2005-06 school year, among Latino students in Sherwood, 61.7% met or exceeded the standard in Language Arts, and 60.8% met or exceeded in Math.

Asian students were the highest achieving in the district, with 88.6% meeting/exceeding in Language Arts, and 88.3% meeting/exceeding in Math.

Among White students, 82.1% met/exceeded in Language Arts, and 84.6 met/exceeded in Math.

In general, the drop-out rate for students in Sherwood has declined since the 2000-01 school year, with lower drop out rates than for the county or the state. The following chart illustrates:

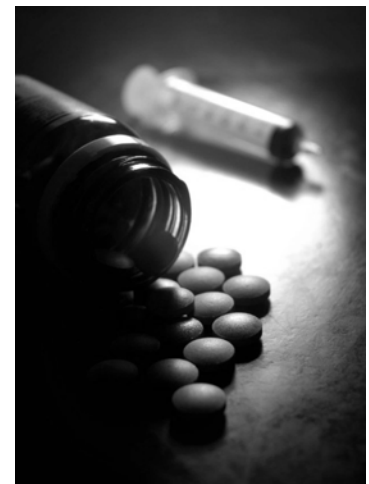
Drop-Out Rates	Sherwood	County	State
2000-01	4.01%	4.57%	5.25%
2005-06	3.2%	3.4%	4.1%

SHERWOOD

Community Needs and Issues

The Commission on Children and Families has spent the last year talking with hundreds of people in communities across the county to explore the issues facing children and families. In Sherwood, these conversations revealed significant concerns relating to the health and well-being of our children, youth and families. The following issues emerged in conversations with representatives from schools, social service agencies, child care resource and referral, and law enforcement in south Washington County:

- Rates of substance abuse are increasing in the Sherwood area. Methamphetamine use is a particular concern.
- Child abuse rates are increasing.
- A lack of parenting education classes and family support services for high risk families was identified.
- There is a lack of child care, especially infant/toddler care. In addition, there is a lack of support for child care providers in terms of education about child development and small business strategies.
- There is a lack of affordable after school programming. A specific need for creative recreational opportunities for teens was expressed.
- There has been rapid population growth and each of the five Sherwood School District's schools exceed their recommended capacities. As of September 2006, the district had 400 more enrolled students than it had capacity. A construction levy was passed in November 2006 and a remodel/expansion of the current high school and the construction of a new elementary/middle school is currently underway.
- Due to the rapid population growth there is an increased need for pub-



SHERWOOD

lic transportation. Local traffic congestion is increasingly becoming a problem.

- There are limited mental health resources available in the Sherwood community for children and families.
- Access to providers who accept OHP is limited and Sherwood families often have to travel to Tigard-Tualatin or Hillsboro to access primary care.
- The rising costs of housing mean that there are less affordable units. There is a need for the development of housing for households with lower incomes.
- Increase of availability and involvement in things that tear families apart such as gambling, low cost drugs, and pornography
- There is very limited local access to community services. Residents in need often have to travel to Tigard-Tualatin, Wilsonville, or Hillsboro to reach service access points. This is especially true for family counseling, parent support, counseling groups for kids – Domestic Violence, grief.
- Language and/or cultural differences



Existing Services and Supports

Conversations with the community revealed a number of strengths in the Sherwood area, both in terms of the characteristics of residents and the community as well as in terms of community supports:

- There is good collaboration and communication between mental health agencies and the Sherwood School District.
- Lots of adults, including parents and school staff, are working for positive activities for kids, such as after school activities.

SHERWOOD

There is also a movement underway to build a cultural arts center in Sherwood that could house space for recital halls, art classrooms, etc.

- Many churches looking outward and trying to find volunteer partnerships with schools, non-profits, etc. to help low income families, such as the recent opening of a hot meal food sight at St Francis Church
- International Medical Teams has dental vans visit Sherwood area schools and Head Start.
- At the community level, there is increasing awareness of and involvement in addressing social services needs (may not provide money – but certainly provide access/ leverage of key leaders).
- Sherwood businesses are increasingly supportive of the community and engaged in supporting the city's organizations and services.
- The Sherwood School District partners with Providence Sherwood Medical Group to provide a school linked health center.
- The Sherwood School District partners with Portland Community College to support alternative options for youth at risk of not succeeding academically through the Gateways program and an off site alternative school.



Conversations with school and community leaders in Sherwood revealed that the availability of services does not meet the needs of the rapidly growing population. Services available in Washington County, with some being targeted to Sherwood residents, include:

Health

- ***Community Health Nursing*** – Washington County Health Nurses provide home visits and specialized services to

SHERWOOD

new parents who have children with special medical needs. Community health nurses help families access other health and social services

- ***Health and Developmental Screening*** – Community health nurses provide regular health and developmental screening for children with special health needs. Children who participate in Head Start/Oregon Pre-Kindergarten services also receive health and developmental screening and their families are assisted in accessing any needed services. New Parent Network/Healthy Start home visitors provide regular screening for at-risk first time parents and their babies as part of intensive home visitation services.
- ***Direct Care*** – Low cost clinics in the area include the Essential Clinic in Tigard, and Virginia Garcia Memorial Health Center clinics in Beaverton and McMinnville.
- ***Nutrition*** – The Women Infants and Children nutrition program provides vouchers for dairy, cereal, fruit juices (and fruits/vegetables as Farmer's Markets) for lower income pregnant women, and young children. Nutrition education is also provided through regular classes held in health clinic settings in a number of locations around the county.
- ***Outpatient Mental Health and Addiction Treatment Services*** – for children and families are available through a network of county-funded treatment providers. Services can be provided in home based settings to facilitate access to services. For children and youth experiencing serious mental health or substance abuse concerns, community treatment providers will work to assist families to access intensive community based treatment and or residential treatment services.
- ***School linked health center*** – Through a partnership of Providence Sherwood Medical Group and the Sherwood



SHERWOOD

School District, students with or without medical insurance can access health services at the Sherwood Providence clinic.

Parenting and Family Support

A number of parenting and family support services are available and are provided in the Sherwood area:

- ***Parenting Classes*** are available through a partnership between the Sherwood School District and Washington County Parenting Consortium partners.
- ***Family Coaching*** is a home-based skill building service for families with a child displaying high risk and/or challenging behaviors.
- ***The New Parent Network/Healthy Start program*** provides home visitation service to at-risk first time parents, providing individualized parenting education and support to assist parents in supporting their child's development and meeting their family's basic needs.
- ***Babies First*** provides community health nurse home visitation services for families who have an infant with special health needs.
- ***Family Support and Connections*** – Community outreach specialists provide families involved in Department of Human Services programs (i.e. cash assistance) who are at-risk of involvement in the child welfare system with individualized support, case management and assistance accessing community resources.



There are also a range of services available to support families from throughout the county, although there is not service capacity in Sherwood. These services include:

SHERWOOD

- ***Self-Sufficiency Services*** – The Oregon Department of Human Services branch office in Tigard provides a range of services and programs for low income families, including cash assistance, food stamps, child care assistance, and Oregon Health Plan. Offices are located in Tigard, Beaverton and Hillsboro. Application materials are available at the Tigard Family Resource Center to facilitate families accessing services.
- ***Child Welfare*** – The Child Welfare Division of the Oregon Department of Human Services, with offices in Hillsboro and Beaverton, provides Child Protective Services to investigate allegations of abuse and neglect and assure safety of children, permanency planning for long term placement of children in foster care or adoptive homes, family reunification services to support children returning home, and system of care supports to provide specialized and individualized services for individualized wrap-around services to children in the Child Welfare System.
- ***Homeless Shelters*** – There are four shelter programs serving homeless families in the county, one shelter serving women and children leaving domestic violence situations, and one shelter serving runaway and homeless youth.
- ***Court Appointed Special Advocates*** – Community volunteers who are recruited, trained and supported to provide advocacy, monitoring and support for children in the Child Welfare system.

Youth Development

There are limited school and community-based services to support youth success in school and provide them with constructive activities during non-school hours. Those that are available in Sherwood are highlighted below, followed by some county-wide supports which can be utilized by Sherwood residents.

- ***After School Activities*** – There are a number of activi-

SHERWOOD

ties offered after school hours sponsored by the school district, including sports, academic enrichment and some activity clubs which meet seasonally (sports) or on a regular basis. The YMCA – Sherwood provides some after school programming including sports, crafts, and a games room and has some teen-specific programming.

- **Public Library** –The Sherwood library offers pre-kindergarten story times and other early literacy supports. The library also offers reference assistance and access to the internet to aid students in completing school assignments.
- **Community Service** – The annual Youth Summit provides an opportunity for middle and high school student teams to submit a proposal for funds to implement a school or community based project to improve conditions in their community.
- **Counseling, Skill Building and Prevention Education Groups** – Through school counselors and Youth Contact, a community mental health and alcohol treatment provider, individualized and group based counseling are offered. Additionally, skill building groups, education and awareness groups may be offered in specific areas such as substance abuse, violence prevention, problem solving, etc. The Health Department has health educators who can provide education programs in school and community settings for youth and adults on a range of topics from health topics to gambling to substance use.
- **Alternative Education / Options** – All school districts offer alternative education options programs for students for whom a traditional education program is not meeting their needs. There is an alternative learning center for middle and high school students in Sherwood.
- **Homeless Education Services** – Under the auspices of



SHERWOOD

the McKinney-Vento Homeless Education Act, every school district has a designated staff person who works with building staff to identify homeless students (unaccompanied older students or students living with their homeless family), and works with staff to minimize disruption to students' education, works to develop plans to maintain students in their home school, and helps them (and their families) to access needed community resources.

County-wide services which are available to youth from Sherwood, generally relying on families to provide transportation if needed, include:

- ***Mentoring*** – Programs such as Big Brothers, Big Sisters can provide adult mentors to at-risk youth who would benefit.
- ***Employment and Training*** – Several organizations provide specialized employment and training services for youth. Community supports range from the State Employment Division which offers basic pre-employment training and job search assistance regardless of income to federally funded employment and training services including educational supports, pre-employment supports, employer based training placements, job referrals and follow-up support and assistance accessing post secondary education and training opportunities for lower income youth.
- ***Juvenile Department*** – The Juvenile Department offers a range of services for youth referred to prevent further penetration into the juvenile justice system, provide sanctions and restitution, and provide youth with opportunities



SHERWOOD

to develop skills and capacities to succeed in their family, school and community.

- ***Runaway and Homeless Youth Services*** – A short term, home based shelter program has been available for runaway youth and/or youth with a mental health crisis since the late 1970s. In May, 2007 Boys and Girls Aid opened the Safe Place Shelter, located in Hillsboro, OR, offering short term facility based shelter and transitional housing to runaway and homeless youth. Additionally there is a small transitional housing program using scatter site apartments and case management for homeless youth. The 24 hour mental health crisis line provides crisis counseling for runaways and their families, as well as access to shelter services. The Home Plate program is a community collaboration which provides an evening meal, access to showers, a movie and social recreational activity, and referral to community resources for homeless youth once a week.

School Readiness

There are limited services available in Sherwood for families with young children. A brief review of countywide available for residents of Sherwood is provided below.

- ***Child Care Resource and Referral*** – CCRR, operated by Community Action, provides individualized phone support for parents seeking child care, offering information and education in how to select care, indicators of quality, opportunities for assistance in paying cost of care, as well as referrals and information about specific child care providers in family, group home or center based settings. CCRR also provides support and training for child care providers, and works to identify providers and to build capacity in the community for



SHERWOOD

under-served populations. CCRP offers workshops for child care providers on promoting early literacy through reading and other activities, and has a structured early literacy curriculum that is offered to child care providers in their home or center based setting.

- ***Child Care Division, Oregon Employment Department*** – registers and licenses child care providers in the state of Oregon assuring that minimum standards for care are met.
- ***Oregon Department of Human Services*** – administers funds to help lower income families pay for the cost of care (Employment Related Day Care)
- ***Head Start/Oregon Pre-Kindergarten*** – Community Action Head Start of Washington County provides Head Start/Oregon Pre-Kindergarten services in southern Washington County.
- ***New Parent Network/Healthy Start*** – provides home visitation services including parenting and child development education and support for at-risk first time parents.
- ***Early Intervention / Early Childhood Special Education*** – the Northwest Regional Education Service District provides services for young children with disabilities for children from birth to school age. Services for children birth to age three (Early Intervention) are generally provided through home visits and parent training to support children’s optimal development, while services for preschool aged children (4 and 5 year olds) are provided in program sponsored classrooms, community placements and through parent groups.
- ***Sherwood Public Library*** – The public library in Sherwood offers daily early literacy services, including toddler and preschool story hours where young children’s books are read aloud to model reading to young children and to pro-



SHERWOOD

vide exposure to books appropriate for different ages of children.

- **Health Services** – Community health nurses provide home visits to families with a young child who has special health needs. The WIC program provides nutritional supplements and nutrition education for lower income families with young children.

- **Early Childhood Mental Health Consultation** – is



available to provide individual consultation and assistance accessing community based mental health services for children and their families around emergent behavioral and mental health concerns as well as consultation for child care providers and other early childhood professionals to provide information and training in supporting positive social emotional development and early intervention for children displaying early signs of mental health challenges.

- **Outpatient Mental Health Services** – for children and families are available through a network of county-funded treatment providers. Services can be provided in home based settings to facilitate access to services.

Strategy Analysis

While there has been some growth in services available to families in Sherwood in recent years, and many agencies are developing capacity to provide home based services, there continues to be a dearth of services to meet the diverse needs of the quickly growing Sherwood community. There is limited awareness of services which do exist, and while many services may be able to be provided in schools or at home, families must often travel to other jurisdictions to complete eligibility processes (WIC, DHS services, Head Start, etc). In addition, on a county-wide basis, service capacity has not grown quickly enough to keep pace with overall population growth which further hampers the ability of service systems to re-

SHERWOOD

respond to the needs of under-served geographic communities.

Gaps and Barriers to Service

- **Transportation.** There is a need to expand bus and other transportation services. Peak hour runs to major arterials could vastly improve access to services for Sherwood residents: early morning for commuters; after school for students; early evening for commuters. Expansion of volunteer based transportation assistance for the elderly and the disabled, to include school age children/youth to help get them to medical, mental health, substance abuse treatment appointments to reduce barriers to access to care. Activity buses from the schools to transport students who participate in after school activities.
- **After School Activities.** There is a need to expand availability and variety of activities for school aged children and youth during non-school hours, including activities during school breaks and the summer months.
- **Health Care.** There is a need to facilitate access to health care for low income and uninsured children, youth and families from Sherwood. Partnerships with Sherwood School District, Head Start/Oregon Pre-Kindergarten programs, and others could assist with access and transportation. Expansion of screening and school based health services to enhance access to early treatment.
- **Mental Health and Substance Abuse Treatment.** Expansion of school based supports for mental health, to assist in identification of children, youth with behavioral health concerns and assist them and their families to access services.



SHERWOOD

- **Community Awareness.** There is limited awareness of needs of children, youth and families and the barriers that are faced in access to services. There is limited awareness of resources and services that are available and how to access them, and how individuals and community organizations could help with access and service expansion.
- **Need to increase availability of parenting and family support services,** to offer classes and individualized support to families in Sherwood, and build local capacity to support parents/families.
- **Need to provide access to career exploration and employment options for Sherwood area youth.** Entrepreneurship opportunities as well as traditional employment opportunities which may be available in nearby communities.
- **The quickly rising costs of housing in the Sherwood area have made finding affordable rentals in the area difficult.** There is a need for the development of units for lower income households.

Potential Solutions

There are several initiatives under-way in the county which will help to address some of the major concerns identified in Sherwood.

- **The Sherwood School District and the County are currently pursuing funding for the establishment of a Family Resource Center (FRC) or other centralized service center to enhance service access points for Sherwood families.** This FRC would outstation DHS and other agency eligibility staff on a regular basis to facilitate access to OHP, child care subsidies, food stamps and other services for lower income families for whom transportation to an office is a barrier. Parenting classes and other supports would be offered through the FRC.
- **The NW Regional Education Service District is facilitating a collaborative effort to develop and implement systems to im-**

SHERWOOD

prove access to school and community mental health treatment supports for students. The collaboration involves all school districts, the County Mental Health Organization, the Juvenile Department, community behavioral health treatment providers and the Commission on Children and Families. To date, results of the initiative have included development of district and county-wide, cross-district crisis response protocols, training of district staff and mental health treatment staff in evidence-based practices to enhance identification, treatment and support of students with behavioral health concerns, and development of a guide for school staff to the county mental health system and services.

- In order to help facilitate access to needed health care, a county-wide initiative to enroll all eligible children in the Oregon Health Plan is being under-taken. In the Sherwood area, there were 267 children under the age of 18 enrolled in the Oregon Health Plan in 2006.



Conversations with school and community leaders in Sherwood also revealed a number of strategies that could be under-taken in the community to help address concerns identified. Potential strategies discussed included:

- Expansion of after school and summer activities for children and youth to include non-sports activities as well.
- More parenting education and early intervention for at-risk families
- Training for child care providers – esp. child development and business strategies
- Create a safe house(s) for parents to drop off their children during stressful times. This may help to reduce the number of child abuse cases.
- Satellite agency branches should be established in the Sherwood community to increase accessibility.

SHERWOOD

- Increase awareness of resources for families by updating school counselors and administrators on a regular basis out available options and access methods.
- Continue the collaboration among county mental health, juvenile justice, child welfare and agencies such as Youth Contact and LifeWorks.
- Create a community center or community school where activities can be offered for children, youth, families, seniors that could host events, parks and recreation kinds of classes and activities, computer lab, kitchen facility, etc. This has consistently been identified as a need.
- Work with Ride Connection to expand transportation options for residents.
- Develop new community events to build sense of community and help integrate newer residents.

