

Measure 11 Crimes

Crime	Sentence
Assault II	5yrs, 10 mos
Compelling Prostitution	5yrs, 10 mos
Kidnapping II	5yrs, 10 mos
Robbery II	5yrs, 10 mos
Using Child in a Display of Sexually Explicit Conduct	5yrs, 10 mos
Arson I when the Offense Represented a Threat of Serious Physical Injury	7 yrs, 6 mos
Manslaughter II	6 yrs, 3 mos
Rape II	6 yrs, 3 mos
Sexual Abuse I	6 yrs, 3 mos
Sodomy II	6 yrs, 3 mos
Unlawful Sexual Penetration II	6 yrs, 3 mos
Conspiracy to Commit Murder/ Attempted Murder	7 yrs, 6 mos
Assault I	7 yrs, 6 mos
Kidnapping I	7 yrs, 6 mos
Robbery I	7 yrs, 6 mos
Rape I	8 yrs, 4 mos
Sodomy I	8 yrs, 4 mos
Unlawful Sexual Penetration I	8 yrs, 4 mos
Attempted Aggravated Murder/ Conspiracy to Commit Aggravated Murder	10 yrs
Manslaughter I	10 yrs
Murder	25 yrs



Washington County
Juvenile Department

222 N First Ave. MS 47
Hillsboro, OR 97124
Phone: 503-846-8861
Fax: 503-846-8886

Washington County
Juvenile Department

MEASURE 11

ONE STRIKE
YOU'RE
OUT!



WHAT IS MEASURE 11?

Measure 11 is an Oregon law that went into effect on April 1, 1995 and sets mandatory minimum sentences for certain felony crimes. Anybody, 15 years of age and older, who commits those crimes is subject to prosecution in the adult criminal courts, and if convicted (found guilty) could be given the mandatory minimum sentences.

“Won’t the Judge give me a break if I’ve never been in trouble before?”

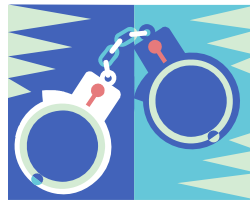
No! This law says you must be tried in Adult Court for those offenses if you are 15 years of age or older. Being convicted of a Measure 11 crime requires a mandatory minimum sentence. That means **No Probation**. You go directly to a correctional facility.



EXAMPLES

Manslaughter II

You are driving your car recklessly at high speeds with your friend who is 14; you hit a telephone pole and your friend is killed. You may go to a correctional facility for 6 years 3 months.



Assault II

You start a fight with another person and injure the person with a dangerous weapon (i.e. knife, bat, etc.),

you could go to a correctional facility for 5 years 10 months.

Arson I

You set a house on fire and a firefighter is injured trying to put out the fire. You go to a correctional facility for 7 years 6 months.

Robbery II

You are shoplifting and a clerk stops you. You tell the clerk that you have a knife (or other weapon) and will hurt him. Even if you don’t actually have a weapon, you could go to a correctional facility for 5 years 10 months.

Rape I

You and a date attend a party at a friend’s house. After a while, the two of you go to a bedroom but then your date passes out from drinking. If you sexually touch your date while they are passed out, you can go to a correctional facility for 8 years and 4 months.

Did You Know???

- Youth 15-17 will be tried as adults for certain serious person offenses
- Lack of prior record may not affect outcome
- Youth age 16 & 17 can be held in the Washington County Jail while awaiting trial and sentencing
- Lesser offenses can quickly escalate to Measure 11 status with the “threat or use of a weapon”
- The least amount of time you will be sentenced to for Measure 11 crimes is 5 years 10 months

Washington County
Juvenile Department

222 N First Ave. MS 47
Hillsboro, OR 97124

Phone: 503-846-8861
Fax: 503-846-8886