



**WASHINGTON COUNTY, OREGON**

Department of Land Use and Transportation, Engineering/Surveying Division  
1400 SW Walnut St., MS 17A, Hillsboro, Oregon 97123  
(503) 846-7900 · FAX: (503) 846-7910

**DATE:** March 14, 2007  
**TO:** All Holders of the Road Standards  
**FROM:** Greg Miller, County Engineer *GM*  
**RE:** Washington County Uniform Road Improvement Design Standards  
Traffic Signal Poles and Foundation Changes

---

In November of 2006, ODOT adopted new design standards for traffic signal poles and foundations. ODOT's changes were prompted by changes made by AASHTO in the design of structural supports for Highway Signs, Luminaires and Traffic Signals.

Washington County is reviewing the design criteria, but until that work is done Washington County projects will continue to utilize ODOT standards in place prior to November of 2006. For ODOT projects and projects funded with Federal funds, these projects will have to meet ODOT's new standards.

Here is a quick reference for standard drawings (copies attached) that should be used for design of traffic signals:

Washington County Projects  
TM631 and TM 632

ODOT and Federally funded projects  
TM650, TM651, TM652 and TM653

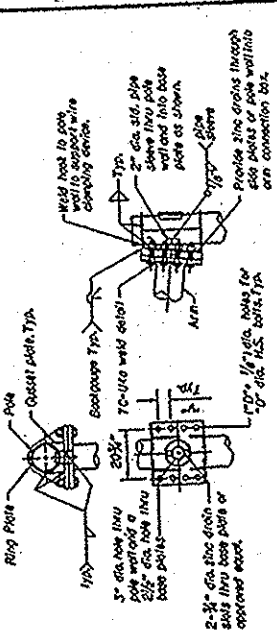
For questions, please contact Abbas Houshmand-Shafii at 503-846-7956.





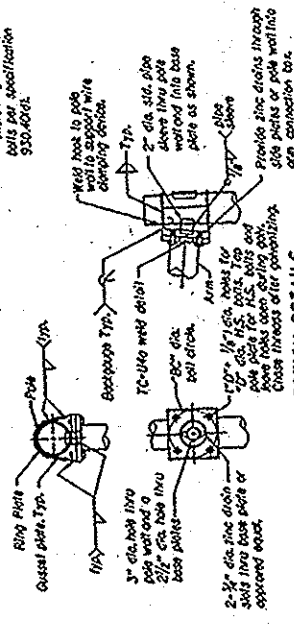






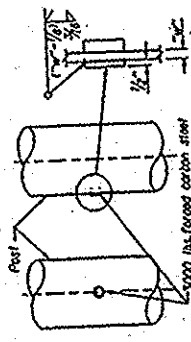
**ARM CONNECTION NOTES**  
 Gusset plates are 1/2"  
 min. thickness.  
 Ring plates are 3/4"  
 min. thickness.  
 Tensioning strength  
 bolts per specification  
 950.4606L.

**8 BOLT ARM CONNECTION DETAILS**  
 No. 2008

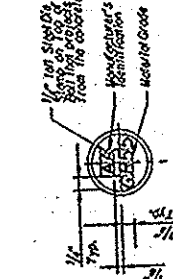


**4 BOLT ARM CONNECTION DETAILS**  
 No. 2008

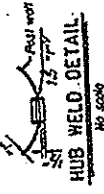
Stock Type	Stock Number	Stock Size	Stock Length	Stock Weight
SA1	15	1/2"	10 1/2"	2.25
SA2	20	3/8"	10 1/2"	1.75
SA3	25	5/16"	10 1/2"	1.25
SA4	30	3/16"	10 1/2"	0.75
SA5	35	1/8"	10 1/2"	0.25



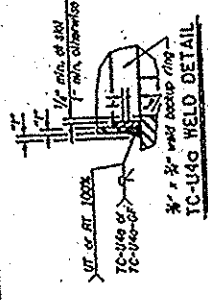
**HUB WELD DETAIL**  
 No. 2008



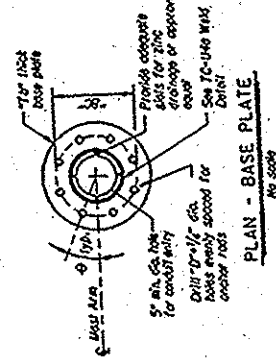
**BOLT STAMP DETAIL**  
 No. 2008



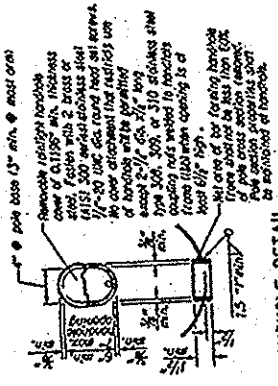
**HUB WELD DETAIL**  
 No. 2008



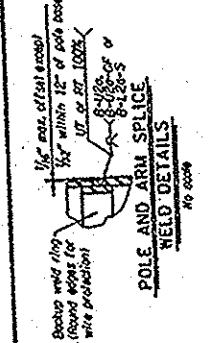
**TC-U4G WELD DETAIL**  
 No. 2008



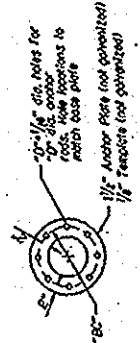
**PLAN - BASE PLATE**  
 No. 2008



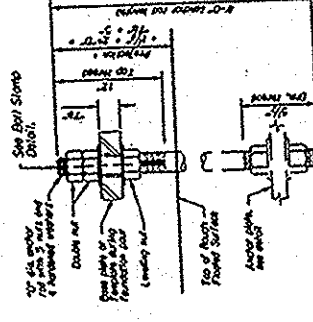
**HANDHOLE DETAIL**  
 No. 2008



**POLE AND ARM SPLICE WELD DETAILS**  
 No. 2008



**ANCHOR PLATE AND TEMPLATE DETAIL**  
 No. 2008



**ANCHOR BOLT DETAIL**  
 No. 2008

Stock Type	Stock Number	Stock Size	Stock Length	Stock Weight
SA1	15	1/2"	10 1/2"	2.25
SA2	20	3/8"	10 1/2"	1.75
SA3	25	5/16"	10 1/2"	1.25
SA4	30	3/16"	10 1/2"	0.75
SA5	35	1/8"	10 1/2"	0.25

**OREGON STANDARD DRAWING**  
**STEEL DETAILS**  
 2004  
 950.4606L

The selection and use of this Standard Drawing, while designed in accordance with generally accepted engineering principles and practices, is the sole responsibility of the user and should not be used without consulting a Registered Professional Engineer.

