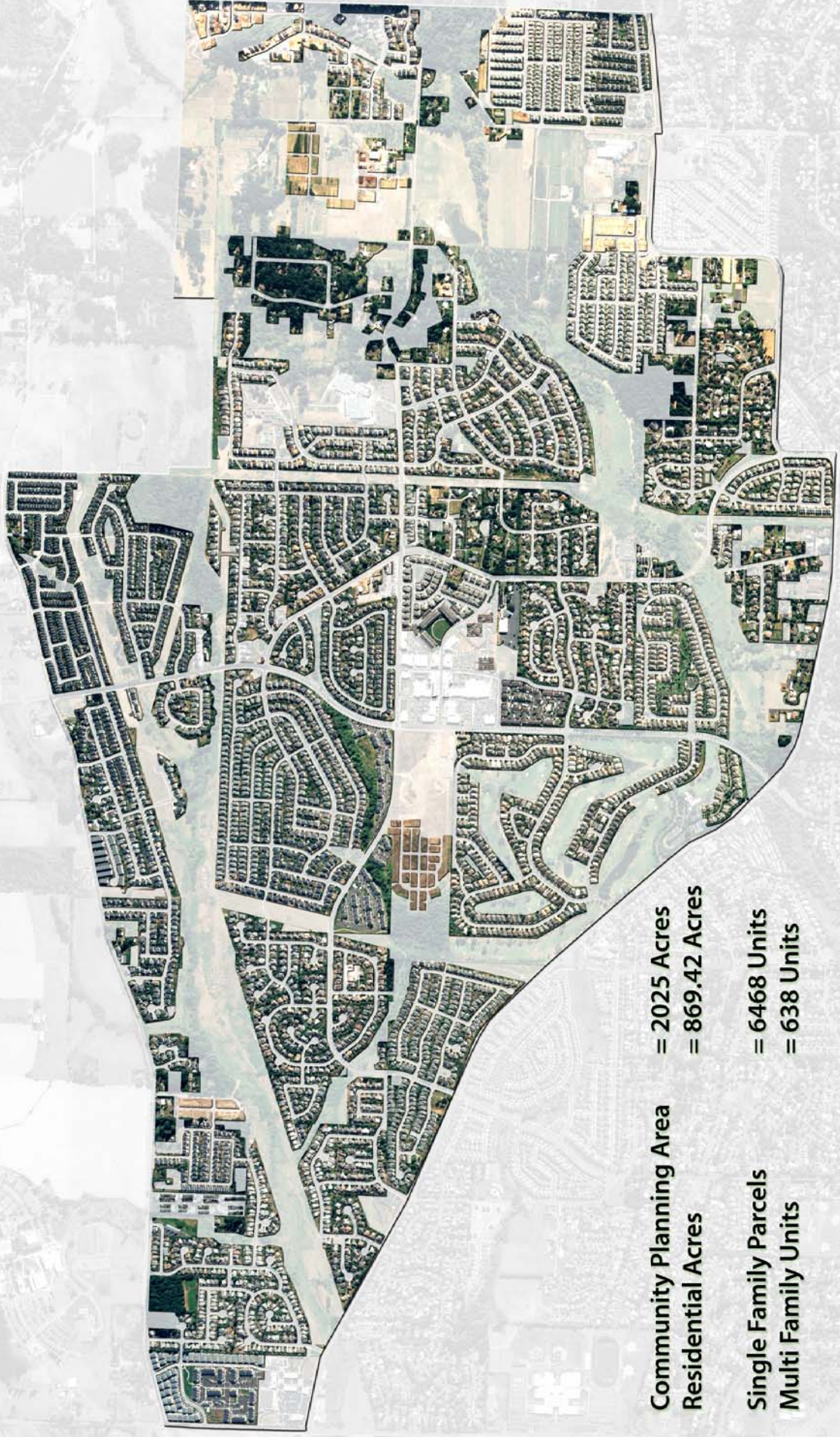


Visualizing Density

Bethany Community Planning Area

Averaged Residential Density 8.2 units per acre



Community Planning Area
Residential Acres

= 2025 Acres
= 869.42 Acres

Single Family Parcels
Multi Family Units

= 6468 Units
= 638 Units

Total Residential Units
Total Residential Acres
Residential Units Per Acre

= 7106 Units
= 869.42 Acres
= 8.2 Units Per Acre



© 2014 City of Bethany, OK