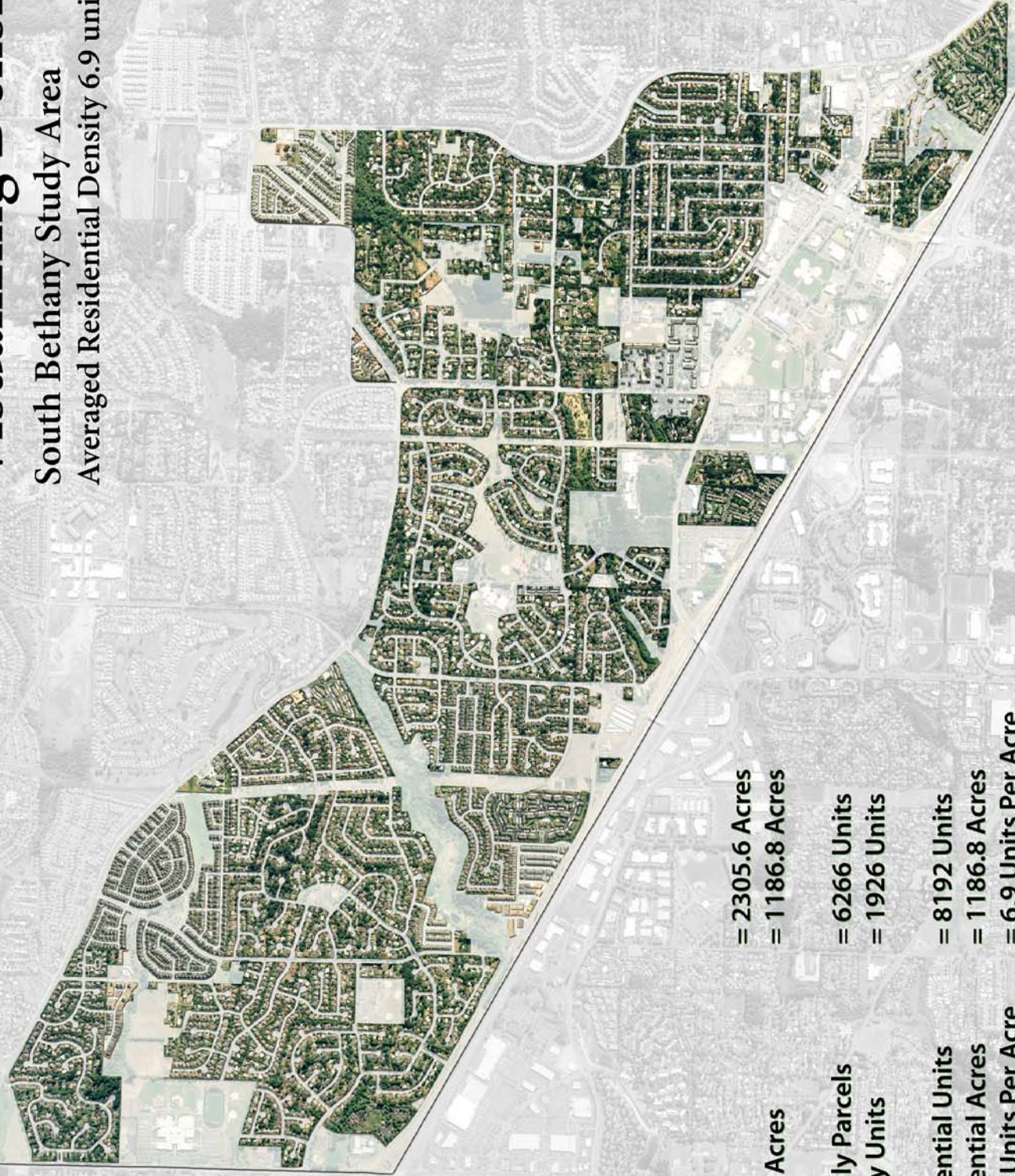


Visualizing Density

South Bethany Study Area

Averaged Residential Density 6.9 units per acre



Study Area	= 2305.6 Acres
Residential Acres	= 1186.8 Acres
Single Family Parcels	= 6266 Units
Multi Family Units	= 1926 Units
Total Residential Units	= 8192 Units
Total Residential Acres	= 1186.8 Acres
Residential Units Per Acre	= 6.9 Units Per Acre

