



WASHINGTON COUNTY SHERIFF'S OFFICE

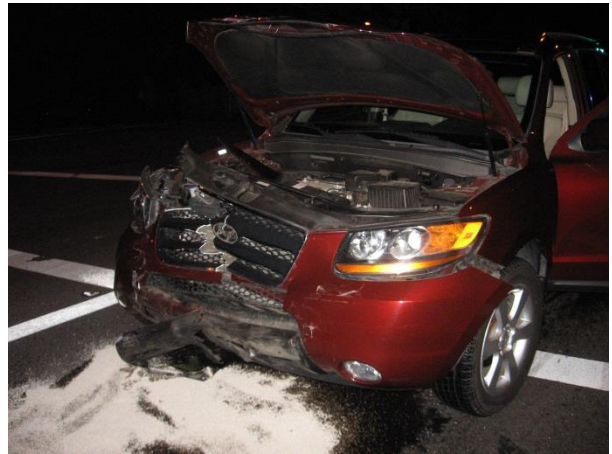
Conserving the Peace Through Values Driven Service
Sheriff Pat Garrett

Media Release

Impaired Driver Runs Red Light, Injures Two People

July 2, 2017 – Deputies arrested a man for driving under the influence of intoxicants (DUII) after injuring two people following a crash in Aloha.

On July 2, 2017, at approximately 1:42 a.m., Washington County Sheriff's Office deputies responded to a crash at the intersection of SW Bany Road and SW 170th Avenue in Aloha. When they arrived they found two people in a 2015 Toyota Camry who were injured after being struck in the side of their car by a 2008 Hyundai Santa Fe driven by 34-year-old Edmund Scott of Beaverton.



Deputies investigating the crash determined that Mr. Scott most likely ran a red light traveling west on SW Bany Road and struck 57-year-old Somkhit Thilavan of Aloha in the passenger side of his car. Mr. Thilavan and his passenger, 55-year-old The Tai Ngo of Aloha, both received non-life-threatening injuries and were transported to an area hospital where they were treated and released.

Deputies determined that Mr. Scott had been drinking, and arrested him for DUII and two counts of assault in the fourth degree. Mr. Scott's blood alcohol level was more than twice the legal limit.

The Washington County Sheriff's Office will have extra patrols out for the extended Fourth of July weekend concentrating on DUII and other traffic related behavior that causes crashes.

