



WASHINGTON COUNTY SHERIFF'S OFFICE

Conserving the Peace Through Values Driven Service
Sheriff Pat Garrett

PRESS RELEASE

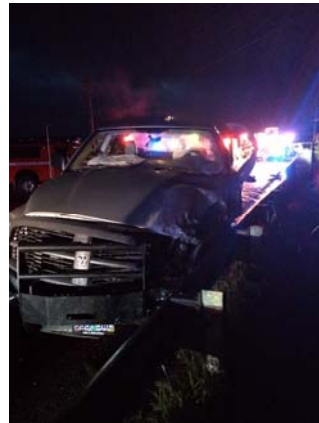
One Arrested for DUII , Life Flight Activated for Victim in Crash

--Wednesday, May 17, 2017

On Tuesday night, Washington County Deputies responded to a head-on crash in rural Washington County. One driver was arrested for DUII, the victim, who was driving a van, was flown via Life Flight from the scene. The other two occupants of the van were transported via ambulance.

On May 16, 2017, at 8:58 p.m., Sheriff's deputies responded to a serious crash on SW Farmington Road near the intersection of SW River Road. A 2007, Dodge pickup driven by Jesus Villanueva-Pettry, age 23 of Beaverton, crossed the center line and crashed into a 2000 Chrysler van.

The van had three occupants. Larry Waters, age 53 of Hillsboro, was in the front passenger seat. His 16-year-old daughter was driving the van and his other younger daughter was in the back seat.



Both drivers had to be extricated by TVF&R from their vehicles. The 16-year-old driver was transported to OHSU by Life Flight with serious physical injuries. Mr. Villanueva-Pettry, Mr. Waters and his other daughter were transported to OHSU via ambulance with non-life threatening injuries.

Mr. Villanueva-Pettry was investigated and cited in lieu of arrest for DUII. The investigation is continuing and additional charges against Mr. Villanueva-Pettry are expected.