

MEDIA RELEASE

Deputies Seek Witnesses from Friday Afternoon's Motorcycle Crash

December 8, 2020

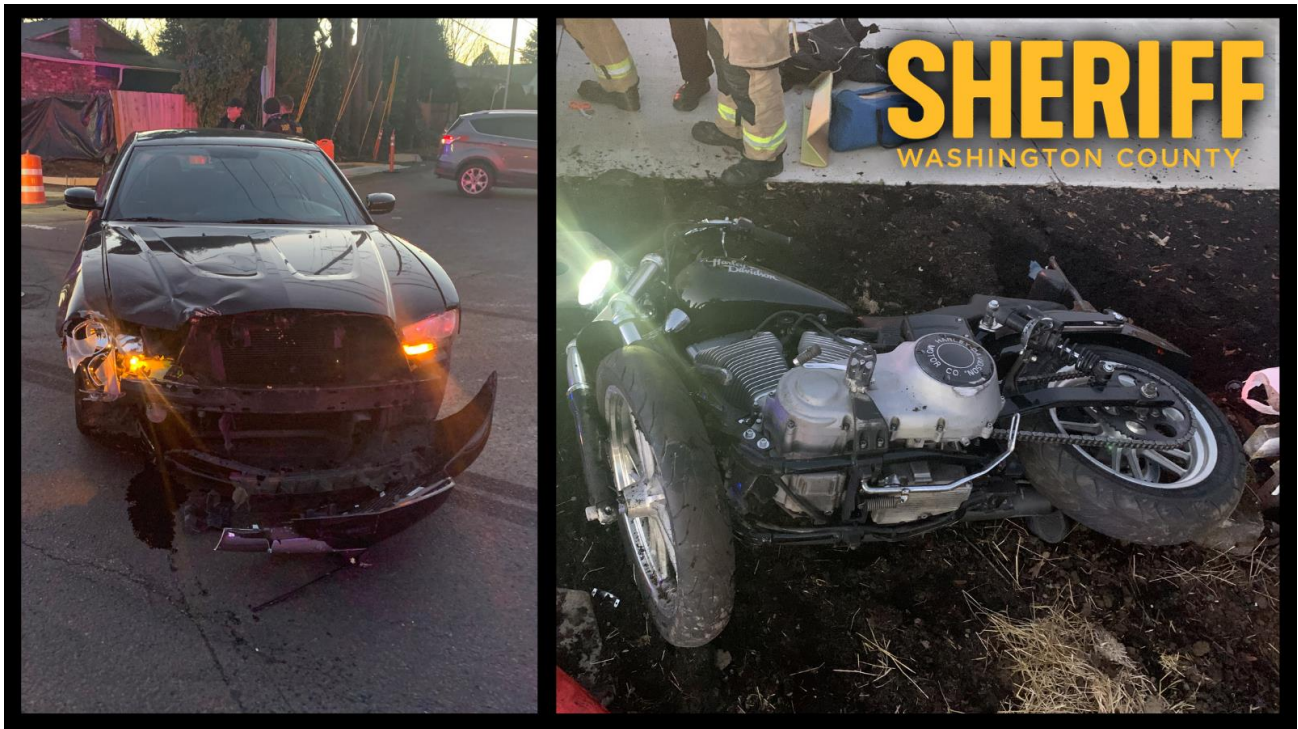
On Friday, December 4, 2020, at 4:35 p.m., Washington County Sheriff's Office deputies responded to a crash near the intersection of SW 198th Avenue and SW Blanton Street. The collision involved a black Harley-Davidson motorcycle and a black Dodge Charger. The female motorcycle passenger was severely injured.

Deputies are looking for any witnesses who observed the crash or the motorcycle before the collision.

The motorcycle driver is a white male 6' 01", 235 pounds, and the motorcycle passenger is a white female 5' 00", 125 pounds. They were both wearing black leather jackets and black helmets.

If a community member observed the crash or the motorcycle driving before the collision, deputies ask them to call non-emergency dispatch at (503) 629-0111 to report what they saw.

The [Washington County Crash Analysis Reconstruction Team \(CART\)](#) is investigating the crash. CART is a multi-agency team of specially trained law enforcement officers from the Sheriff's Office and the Beaverton, Hillsboro, Tigard, and Tualatin Police Departments.



SHERIFF
WASHINGTON COUNTY

MEDIA CONTACT: 503-209-5613

"CONSERVING THE PEACE THROUGH VALUES DRIVEN SERVICE"