



WC-ROADS

 facebook.com/washco.roads

 [@washcoroads](https://twitter.com/washcoroads)

 503-846-ROADS (7623)

wc-roads.com

Serving the roads of:



wc-roads.com

- Request road service
- Roadwork News
- Road closures
- Traffic advisories
- Transportation projects



Building Community

Washington County Department of

Land Use & Transportation

Annual Report FY 2016-17

Andrew Singelakis, Director



Get Involved!

SERVE ON A COMMITTEE

Volunteer citizen committees help guide our work. Some are permanent, like the Planning Commission, the Rural Roads Operations and Maintenance Advisory Committee and the Urban Road Maintenance District Advisory Committee.

Others are temporary, formed to provide guidance on a particular project such as the Transportation System Plan Update or a road improvement project. To learn more, call 503-846-4963 or email lutdir@co.washington.or.us.

ADOPT-A-ROAD AND ADOPT-A-LANDSCAPE

Consider adopting a road to pick up litter or to maintain roadway landscaping. Adopt-A-Road is LUT's largest volunteer program. Call Adopt-A-Road at 503-846-7623 or visit www.co.washington.or.us/adopt-a-road

STAY UP-TO-DATE

Sign up for LUT publications and updates to help keep you informed. Visit <http://washtech.co.washington.or.us/subscriptions> and look under "Land Use & Transportation" and "Transportation Projects."

Washington County Department of Land Use & Transportation

OFFICE OF THE DIRECTOR

503-846-4530

lutdir@co.washington.or.us

Communications

503-846-4963

lutcomm@co.washington.or.us

Administrative Services

503-846-4530

lutadmin@co.washington.or.us

Assurances/Public

Improvement Permits

503-846-3843

pip_assurances@co.washington.or.us

PLANNING AND

DEVELOPMENT SERVICES

Long Range Planning

503-846-3519

lutplan@co.washington.or.us

Current Planning Services

503-846-8761

lutdev@co.washington.or.us

Building Services

503-846-3470

lutbldg@co.washington.or.us

Code Compliance

503-846-4875

pdscodcompliance@co.washington.or.us

ENGINEERING AND

CONSTRUCTION SERVICES

Capital Project Management

503-846-7800

lutproj@co.washington.or.us

Development Review

503-846-7900

lutengin@co.washington.or.us

Traffic Engineering

503-846-7950

lutraffic@co.washington.or.us

County Surveyor's Office

503-846-8723

lutsurvey@co.washington.or.us

OPERATIONS AND

MAINTENANCE

Road Maintenance

503-846-7623 (846-ROAD)

lutops@co.washington.or.us

Service District for Lighting

503-846-3679

Adopt-A-Road

503-846-7623

ROAD WORK INFO

www.wc-roads.com

www.facebook.com/washcoroads

www.twitter.com/washcoroads



Credits

GRAPHIC DESIGN

Destanee Smay, Graphic Designer/Photographer

EDITOR/WRITER

Melissa De Lyser, Communications Manager

CARTOGRAPHY

Joe Hayes, GIS Analyst

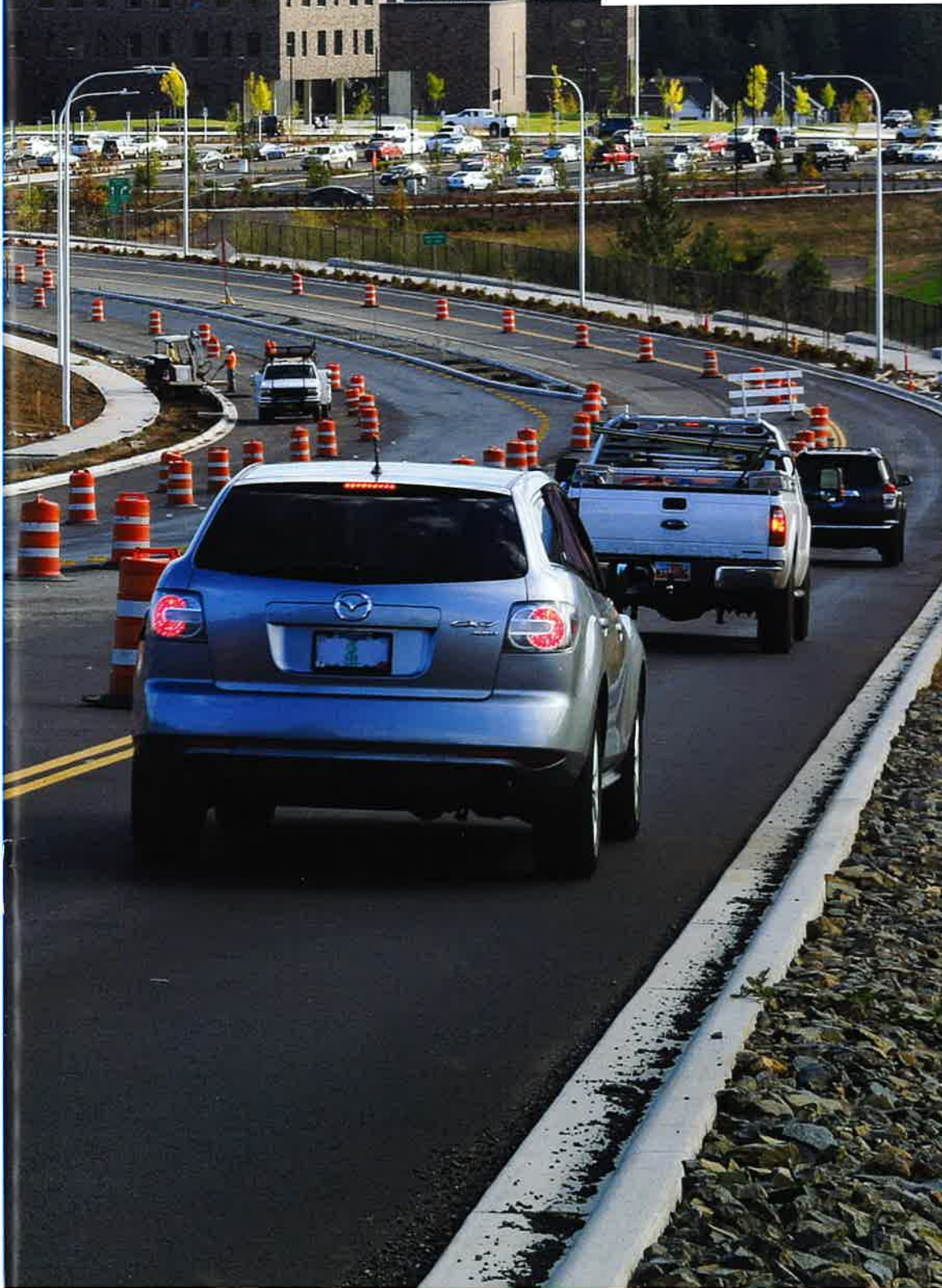
Annual Report FY 2017–18

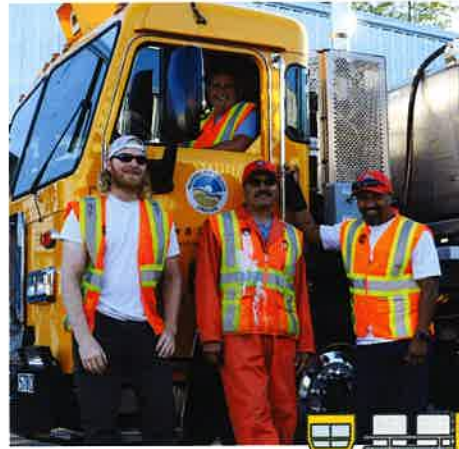
PARTNERING FOR THE FUTURE



Washington County Department of
Land Use & Transportation

Andrew Singelakis, *Director*





Land Use & Transportation mission

1. Planning, building and maintaining a great transportation system
2. Planning and protecting uses of the land

The Department of Land Use & Transportation (LUT) works with city, regional and state government partners, under the direction of the Washington County Board of Commissioners. We provide

transportation, planning, permitting and road construction and maintenance services. Staff in the Charles D. Cameron Public Services Building, 155 N. 1st Ave., Hillsboro, primarily focuses on planning, development activity and land use work. Staff at the Walnut Street Center, 1400 SW Walnut St., Hillsboro, is mainly concerned with transportation design, construction and maintenance work.

CREDITS

GRAPHIC DESIGN & PHOTOGRAPHY Graphic Designer/Photographer Destanee Smay

PHOTOGRAPHY Graphic Designer/Photographer Morgan Braaten

EDITORS/Writers Communications Manager Melissa De Lyser; Senior Communications Specialists Heather Sturgill, Courtney Threewitt and Bonita Oswald

CARTOGRAPHY GIS Analyst Joe Hayes

