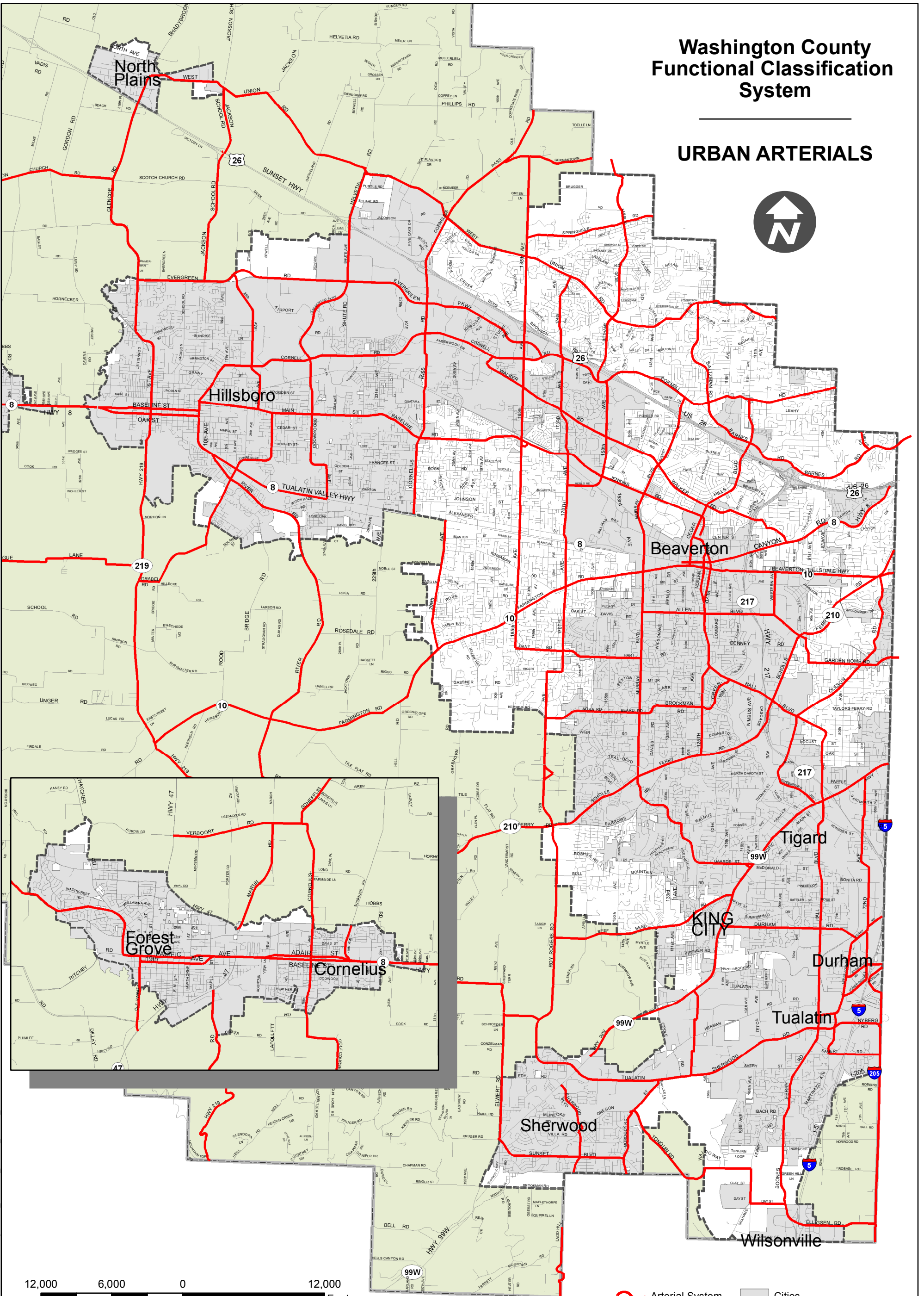


Washington County Functional Classification System

URBAN ARTERIALS



12,000 6,000 0 12,000 Feet

1 0.5 0 1 Miles

- Arterial System
- Other Streets
- Cities
- Urban Growth Boundary (Urban Washington County)
- Rural Washington County

WASHINGTON COUNTY DEPARTMENT OF LAND USE & TRANSPORTATION

ARTERIAL ROADS MAP OF EASTERN WASHINGTON COUNTY

APPENDIX - A

The information on this map was derived from several databases and care was taken in its creation. Washington County cannot accept any responsibility for errors, omissions, or positional accuracy. There are no warranties for this product. However, notification of any errors will be appreciated.
Washington County Department of Land Use & Transportation
Planning Division, 155 N. First Ave., Suite 350-14 Hillsboro, OR 97124
(503)846-3519 Email: lutplan@co.washington.or.us