

# North Bethany Main Street

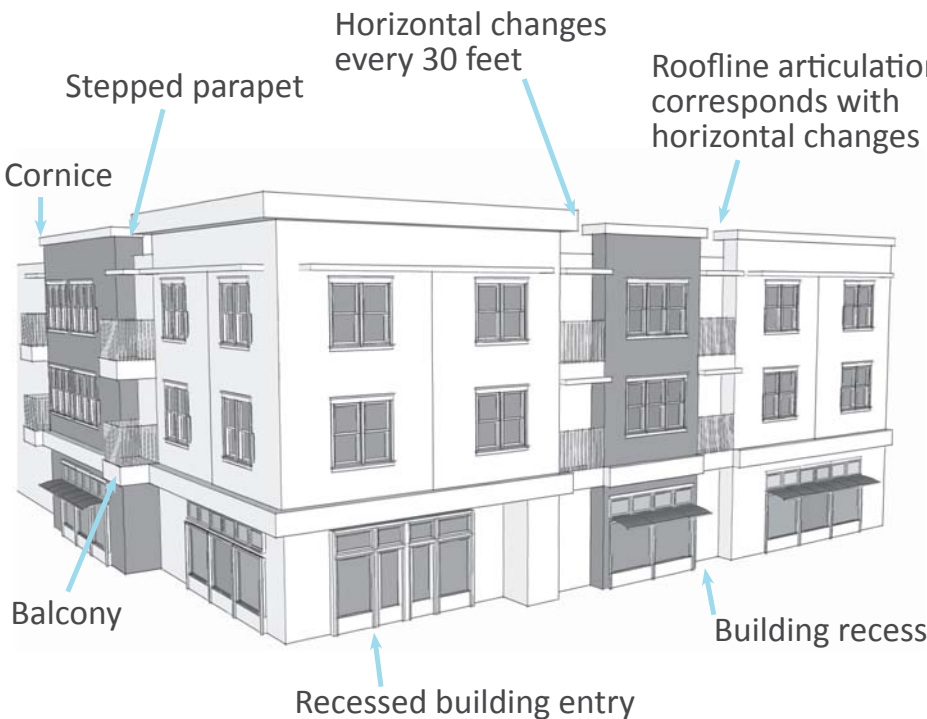


## Building Articulation

### Explanation:

Articulation describes variation in architectural features that break up larger building fronts into smaller planes and masses. Articulation is key to creating visual interest and maintaining a pedestrian scale.

Features that create articulation include windows, balconies, recesses, projections, roofline offsets, canopies, changes in building material, etc. A high degree of articulation should be provided along street-facing frontages.



### Recommendation:

#### Horizontal Articulation

- Street-facing elevations shall be articulated with a minimum 2-foot horizontal change in building plane at least every 30 feet.
- A change in plane shall be provided through at least two of the following:
  - Projecting bays at least 6 feet wide
  - Building recesses at least 6 feet wide
  - Upper level balconies (projecting or recessed), at least 6 feet wide
  - Front porch or stoop projections, at least 4 feet wide
  - Recessed building entries at least 6 feet wide
  - Green walls at least 6 feet wide



#### Roofline Articulation

- Roofline articulation must be provided in a manner that corresponds with the facade articulation, with vertical changes corresponding with horizontal changes.
- This shall be accomplished by providing the following roofline or roof form elements at least every 30 feet.
  - Gables, dormers, offsets in ridgeline, stepped parapets, cornice lines, or changes in roofline elevation.