

North Bethany Main Street



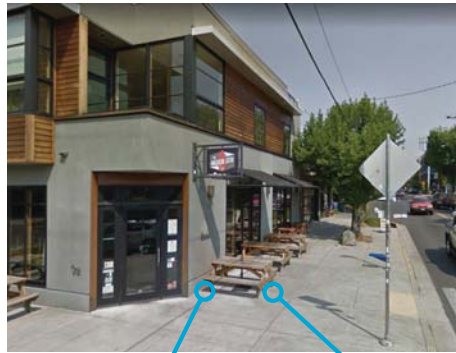
Setbacks & Weather Protection

Building Setbacks

A setback is the space between a building and the sidewalk. Small setbacks provide a more urban feel and a more engaging experience for pedestrians. Along Kaiser Road (Priority 1 pedestrian street), buildings should be allowed right up against the sidewalk (zero setback). Any setback that is provided should include active spaces such as plazas and outdoor seating, to ensure interest and activity along the sidewalk.



Allow buildings right against the sidewalk



Any setbacks must have active uses



Weather Protection

Weather protection features such as canopies, awnings, and recessed entries enhance pedestrian comfort by providing protection against sun and rain. They can also provide visual interest and help define the ground level of buildings. Weather protection features should be required on Priority 1 pedestrian street frontages.



Require weather protection for Priority 1 street frontages

