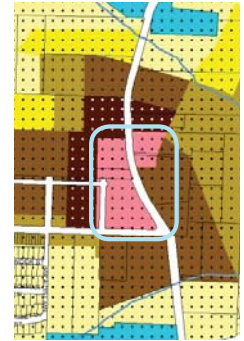


# North Bethany *Main Street*



## Building Height – NCMU

Minimum and maximum building heights will need to be defined for the Neighborhood Commercial Mixed Use (NCMU) portion of North Bethany. A range of building heights is common in mixed-use districts. One- and two-story buildings are typically seen along historic main streets, but taller buildings provide a more urban feel and create a sense of enclosure for the street. The following images show examples of commercial or mixed-use buildings from 1 to 6 stories. Anything above 6 stories would be out of character in a neighborhood Main Street area. Taller buildings are more commonly found in a regional center or town center district.



Neighborhood  
Commercial Mixed-Use

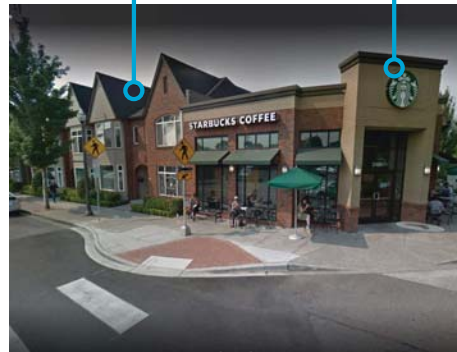
Taller height & different features at corner



1 story

Tall 1-story at corner

2-story mid-block



1 & 2 stories

Emphasis at corner



3 stories



4 stories



5 stories



6 stories