

# North Bethany Main Street



## Weather Protection

### Explanation:

Weather protection features such as awnings, canopies, and recessed entries enhance pedestrian comfort by providing protection against sun and rain. They can also provide visual interest and help define the ground level of buildings. Weather protection should be required along Priority 1 & 2 street frontages and over entries on non-priority streets.

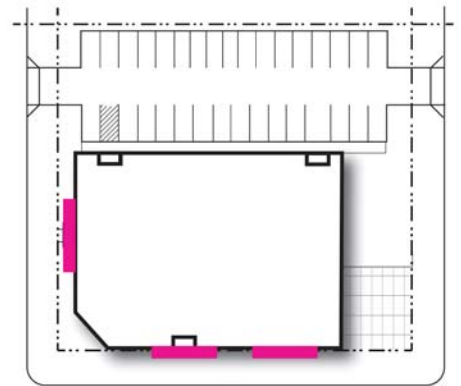


### Recommendation:

	Priority 1 Streets (Kaiser Road)	Priority 2 Streets	Non-priority
NCMU	Minimum 60% of building frontage	Minimum 40% of building frontage	Protection over building entries
R-24 & R-25+	Minimum 60% of building frontage	N/A	N/A

Weather protection must be at least 5 feet deep. Awnings and canopies that extend over the right-of-way must be removable. Buildings with balconies or structural awnings must be set back to prevent intrusion into the right-of-way.

Priority 2: 40%



Priority 1: 60%

