



# Washington County *Bicycle & Pedestrian Improvement Prioritization Project*

Minor Betterments Committee

August 14, 2012



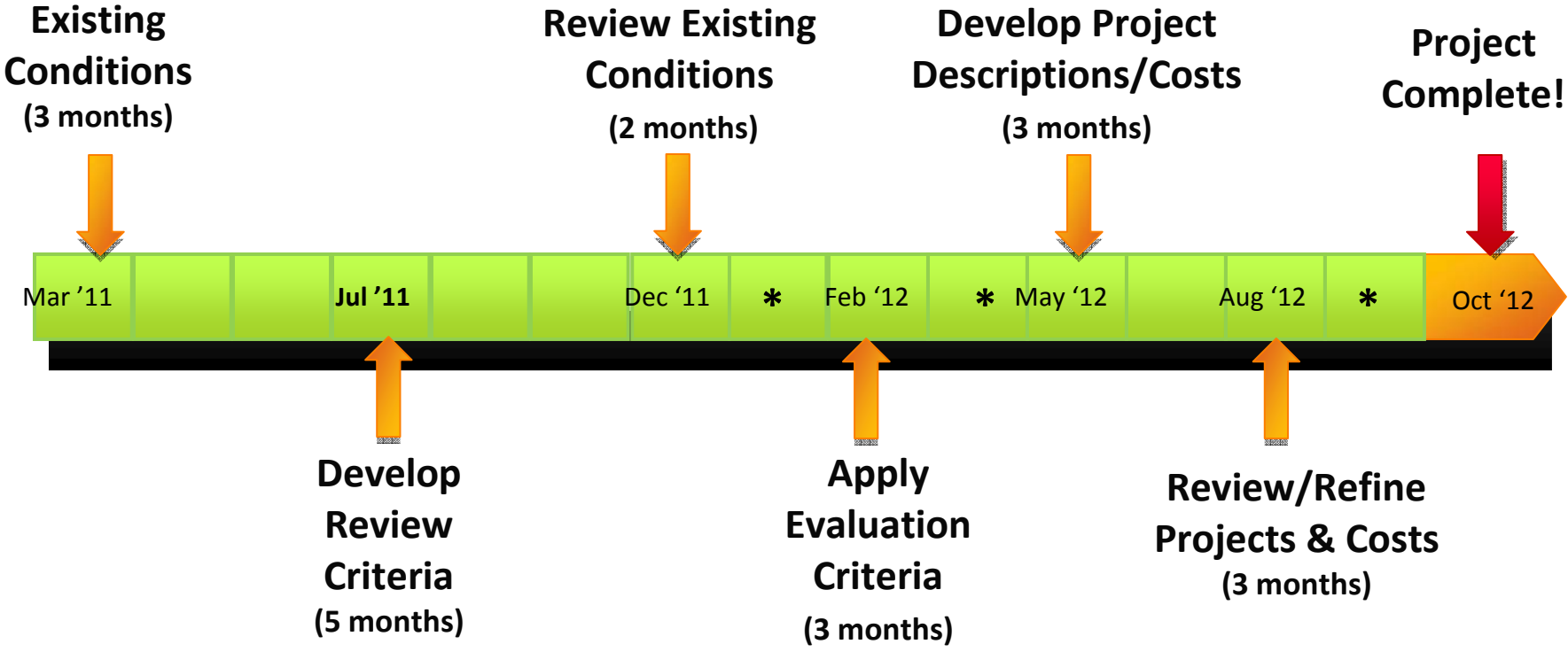


# Bike/Ped Improvement Prioritization Project

- Help the county plan for a more complete bicycle and pedestrian system
- Focused on improving non-auto transportation throughout the county by identifying best areas to:
  - make connections
  - fill system gaps

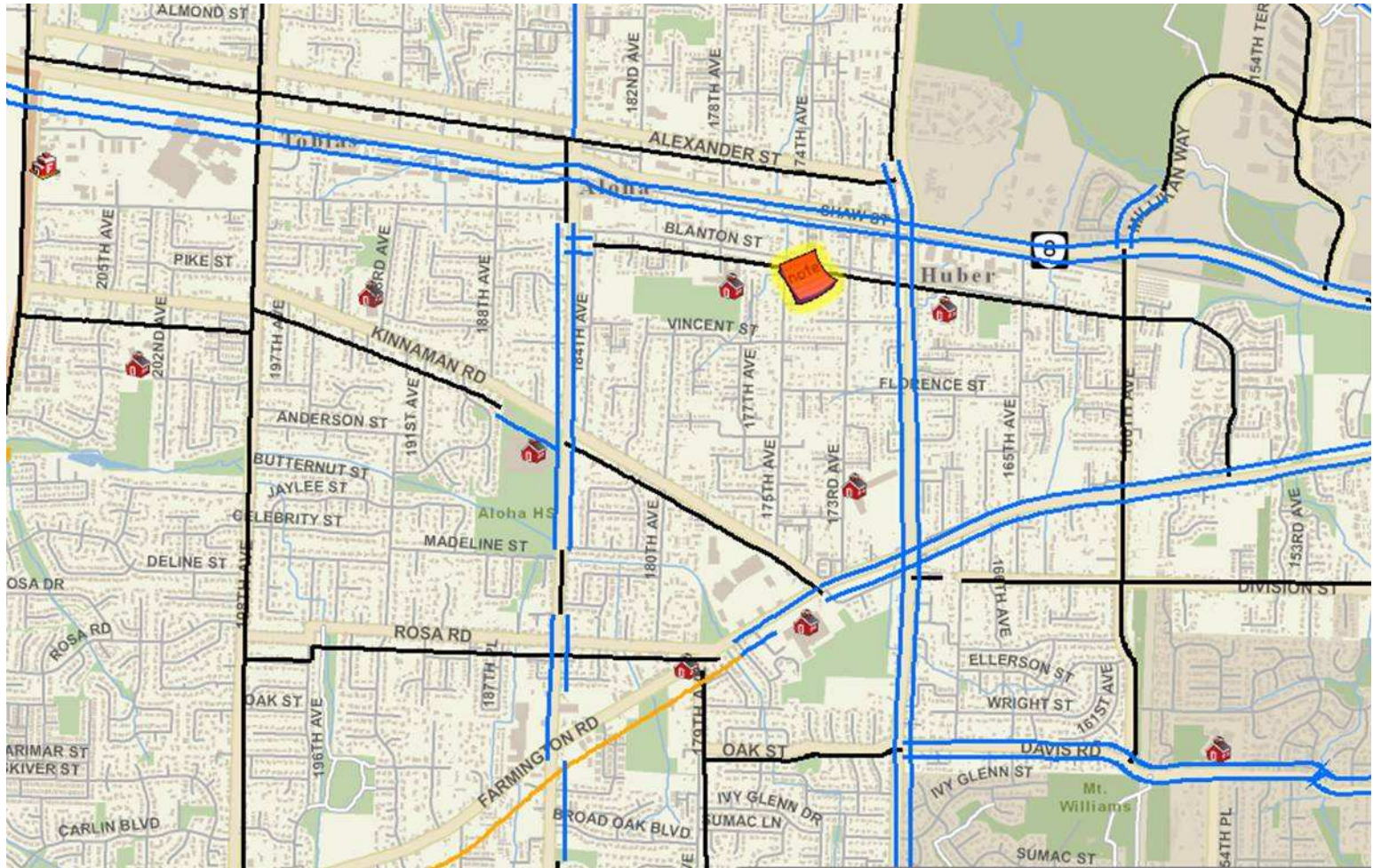


# Project Timeline



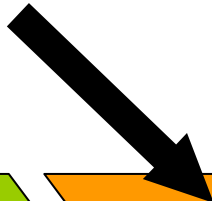
\* Public Review

# Existing Conditions: Bike Lane Inventory



# Project Evaluation Methodology

We are here



# Example Criteria

## Land Use Criteria

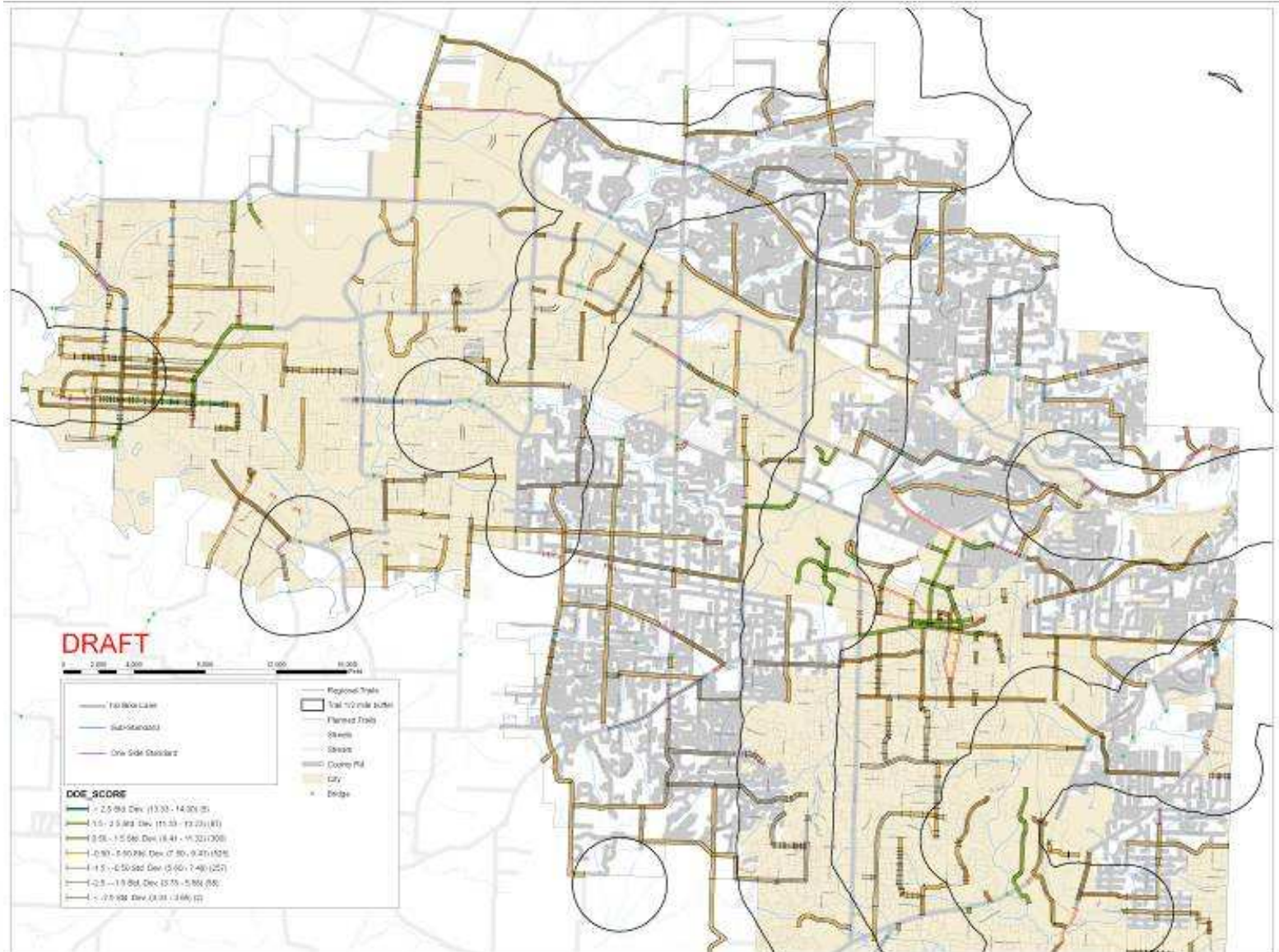
Prioritizes bicycle and pedestrian facility projects that generate users and are within a reasonable walking or cycling distance to supportive land uses.



<b>Population Density</b>	Use 2010 census for population by block group for existing conditions (ppl/acre).	0 ppl/acre
		1-7 ppl/acre
		8-12 ppl/acre
		13-18 ppl/acre
		19-26 ppl/acre
		27-37 ppl/acre
		38-53 ppl/acre
		54-82 ppl/acre
<b>Schools</b>	Schools are broken into three groupings: 1) elementary school; 2) middle and high schools; and 3) colleges. (feet)	83-128 ppl/acre
		>7,920
		6,661 – 7,920
		5,281 – 6,660
		3,961 – 5,280
		2,641 – 3,960
		1,981 – 2,640
		1,321 – 1,980
<b>Active Parks</b>	Parks, pools, tennis courts, community centers and community gardens to be considered. Excludes golf courses, open spaces and common areas that are generally not accessed by pedestrians. (feet)	661 – 1,320
		0 – 660
		>7,920
		6,661 – 7,920
		5,281 – 6,660
		3,961 – 5,280
		2,641 – 3,960
		1,981 – 2,640
<b>Commercial Centers</b>	Town centers and main streets are designated pedestrian districts in the Metro 2040 Plan. Grocery stores are also a target commercial attractor. (feet)	1,321 – 1,980
		661 – 1,320
		0 – 660
		>7,920
		6,661 – 7,920
		5,281 – 6,660
		3,961 – 5,280
		2,641 – 3,960



# Example Gap analysis





# Next Steps

- Refine list of high priority projects
- Seek public input on high priority projects
- Conduct Step 3 Feasibility Analysis; identify 20-50 high priority projects
- Create project data sheets for all high priority projects

