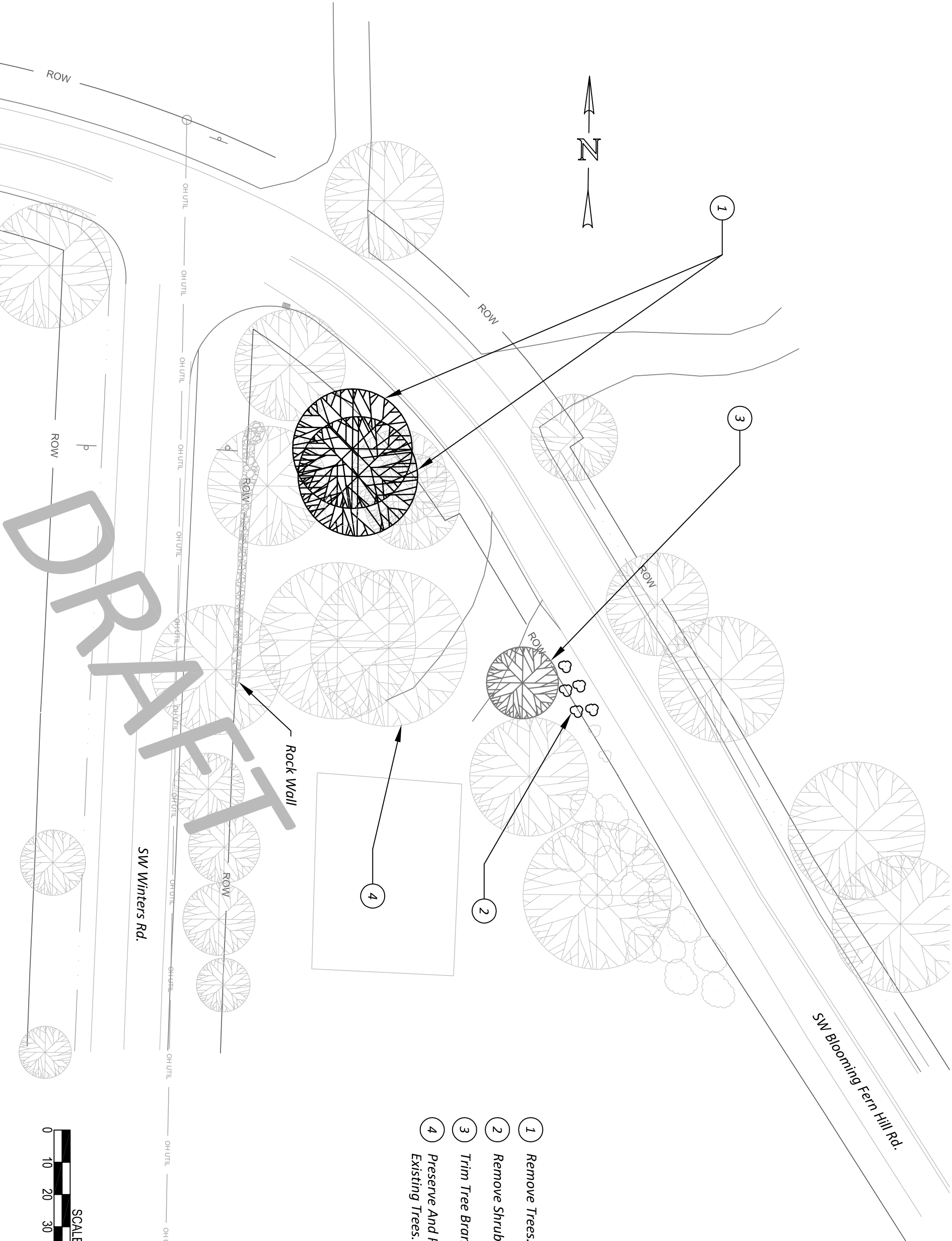


SW Blooming Fern Hill Rd. and SW Winters Rd.



- 1 Remove Trees.
- 2 Remove Shrubs.
- 3 Trim Tree Branches, As Directed.
- 4 Preserve And Protect All Other Existing Trees.



DRAFT

ENGINEERING STAMP HERE  
**PRELIMINARY COPY**  
 50 PERCENT  
 SUBJECT TO CHANGE  
 DLUT OPERATIONS WASHINGTON CO.

WASHINGTON COUNTY  
  
 DEPARTMENT OF LAND USE & TRANSPORTATION OPERATIONS

PLOT STAMP: 09/16/11 1:38P JORDANH  
 CAD: BLOOMING\_FERN\_WINTERS.DWG, TAB: LAYOUT  
 DRAWN BY: D. DRAFTER

NO.	REVISIONS

**SW BLOOMING-FERN HILL RD.**  
 AT SW WINTERS RD.  
 WASHINGTON COUNTY

PROJECT NUMBER  
**XXXX**  
 SHEET NO.  
 1 OF 1  
 SHEET TITLE