



URMD

URBAN ROAD MAINTENANCE DISTRICT

Safety Improvements

MB Candidate 0143

Lost Park Drive

Proposal is for a guardrail near 10430 Lost Park Drive at steep drop off near cross tile outlet

Considered for construction in fiscal year 2012-2013



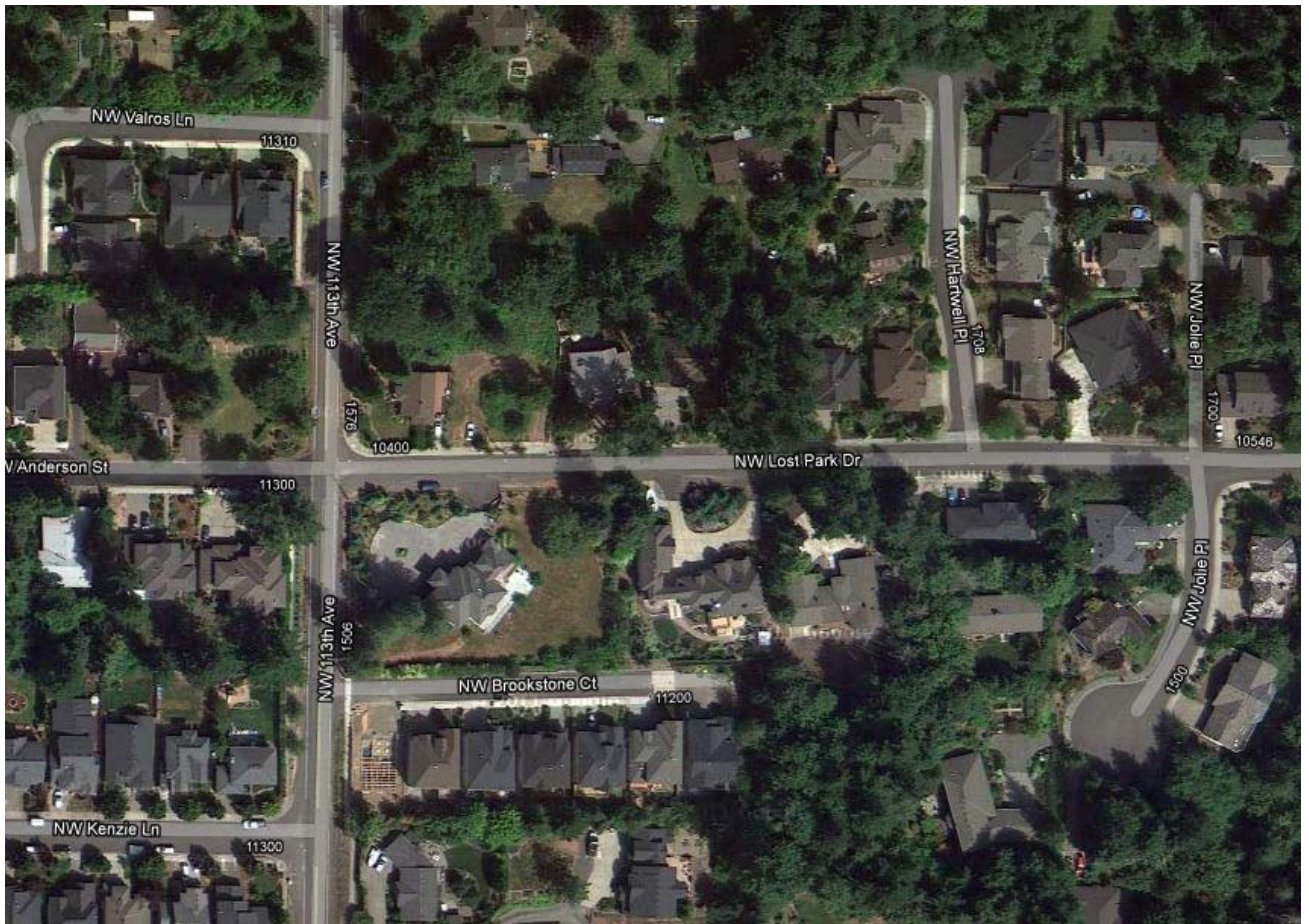
URMD

URBAN ROAD MAINTENANCE DISTRICT

Safety Improvements

MB Candidate 0143

Lost Park Drive



Proposal is for a guardrail near 10430 Lost Park Drive at steep drop off near cross tile outlet



URMD

URBAN ROAD MAINTENANCE DISTRICT

Safety Improvements

MB Candidate 0143

Lost Park Drive



Lost Park Drive looking east



URMD

URBAN ROAD MAINTENANCE DISTRICT

Safety Improvements

MB Candidate 0143

Lost Park Drive



Lost Park Drive looking west



URMD

URBAN ROAD MAINTENANCE DISTRICT

Safety Improvements

MB Candidate 0143

Lost Park Drive



Lost Park Drive looking down (south)