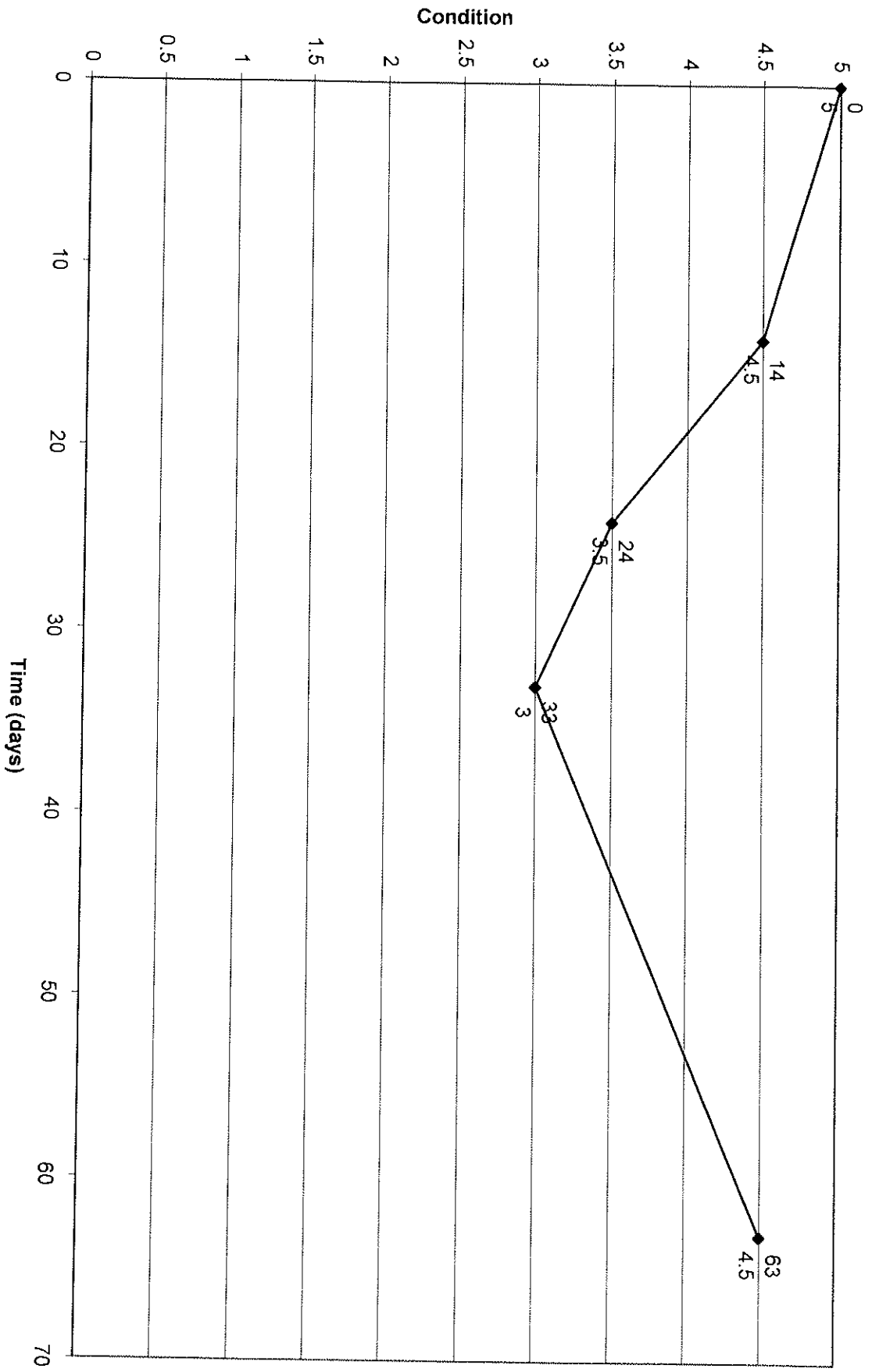


Washington County  
Gravel Road Condition Rating Summary  
2011-2012  
Preliminary Summary  
July 19, 2012

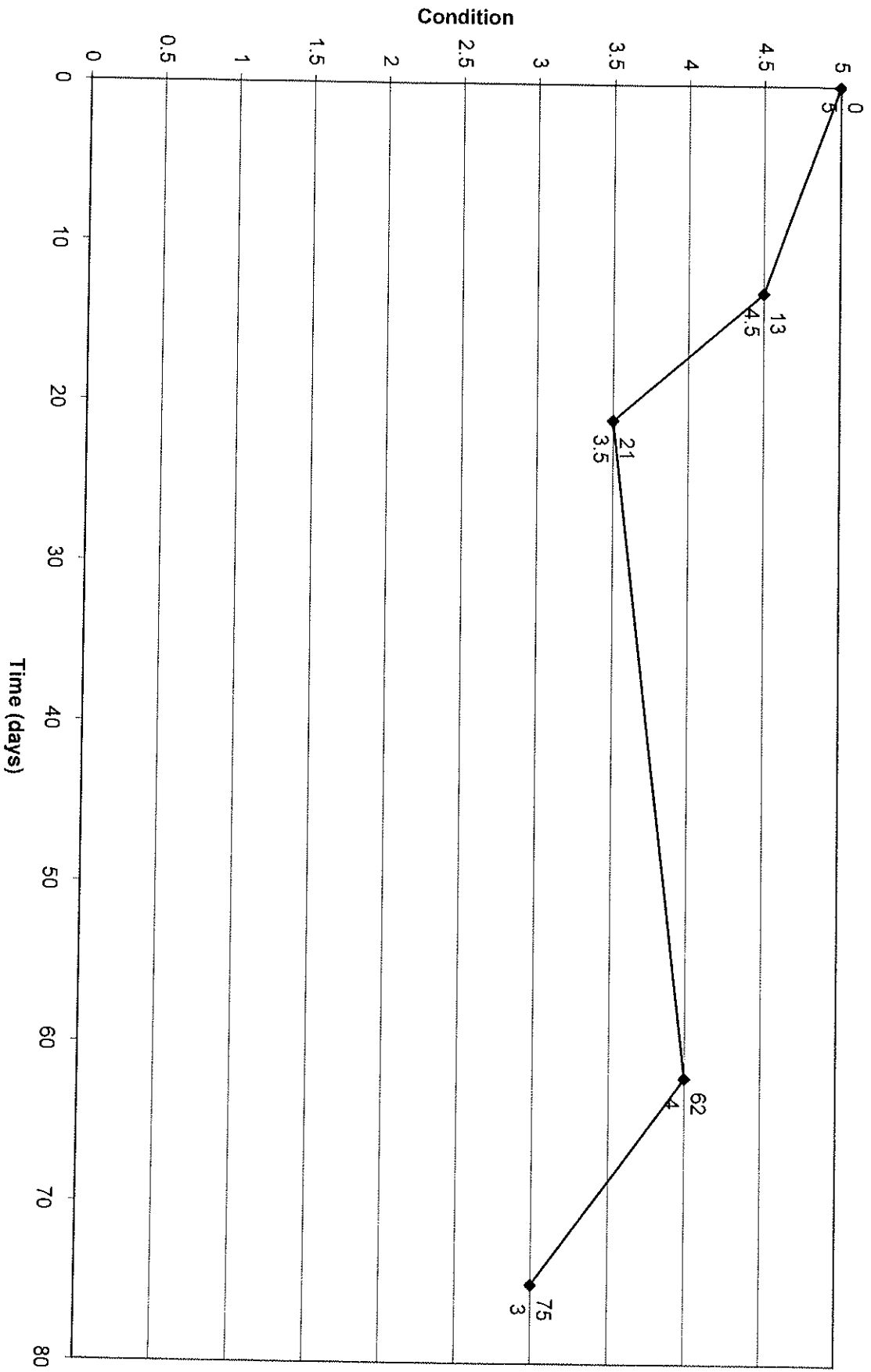
10 County gravel roads were rated using the Wisconsin Transportation Information Center's PASER Manual for Gravel Roads. The roads are distributed throughout the County and were rated four times during the grading season. The following pages graphically represent the condition rating versus the time, in days, between grading. Traffic counts for the roads were also obtained and further analysis will be needed to determine what type of impact that had on the surface condition.

The last page of the summary is a distribution graph illustrating all the data points.

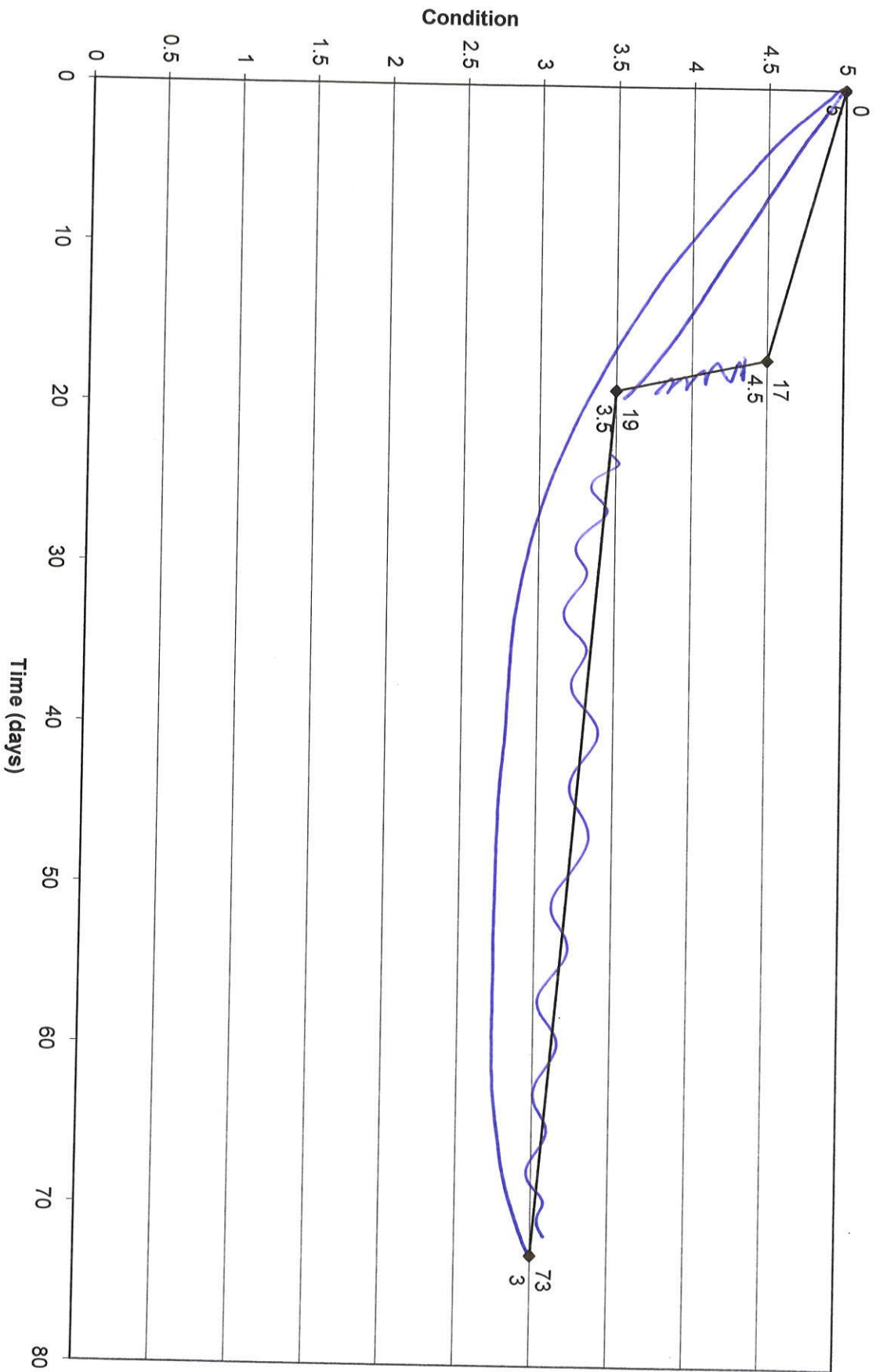
Beal



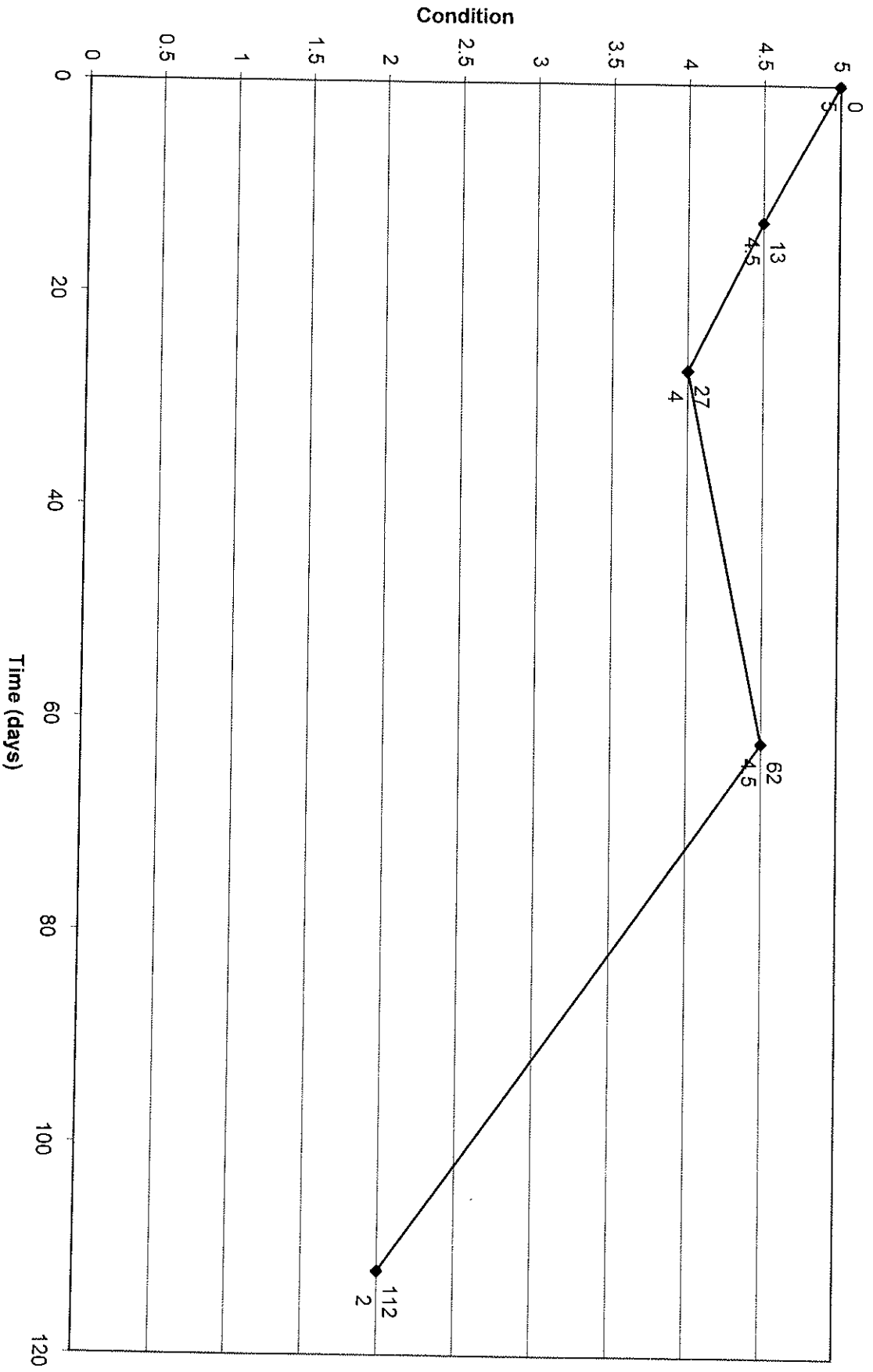
Cedar Canyon



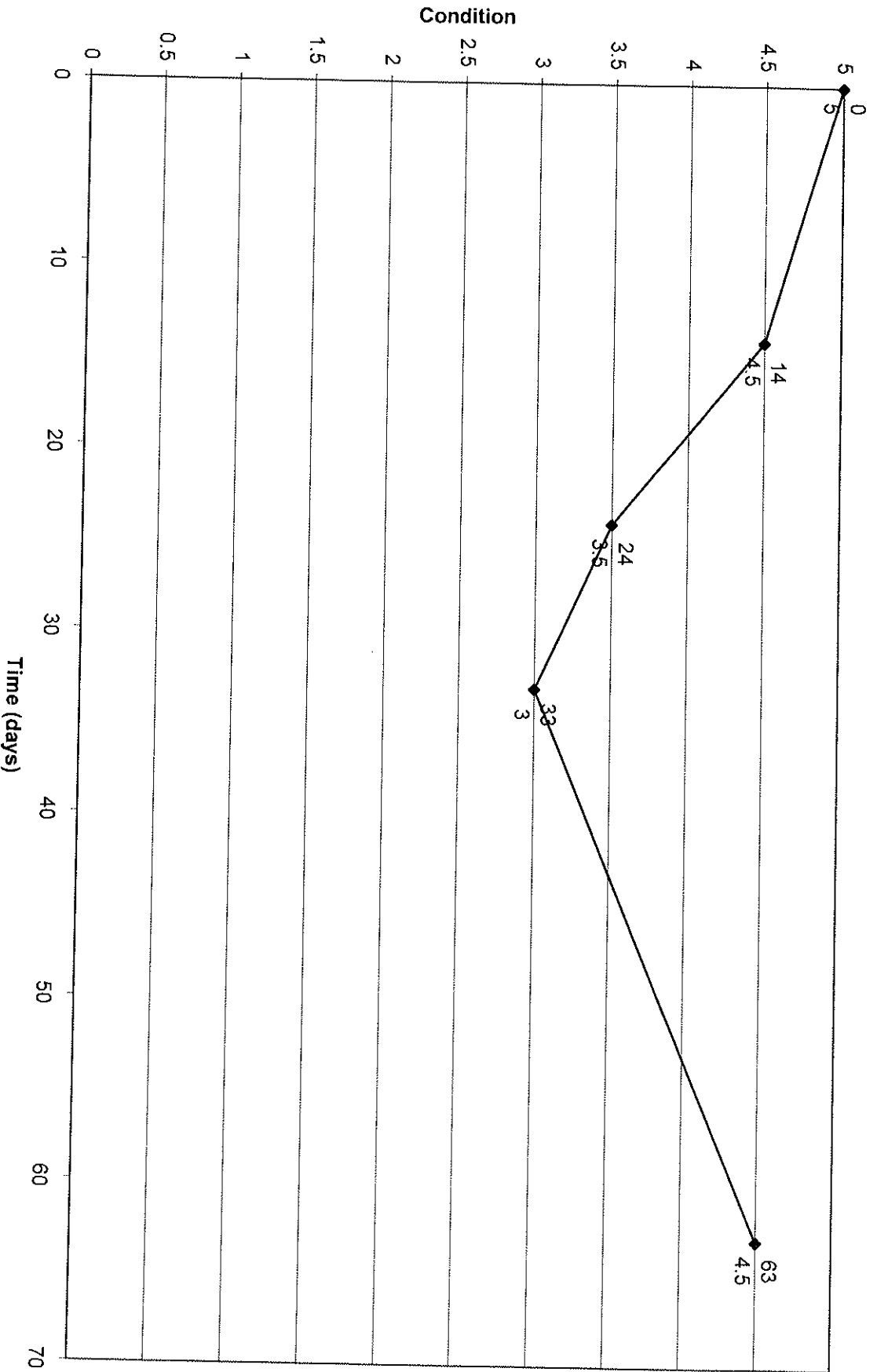
Collins



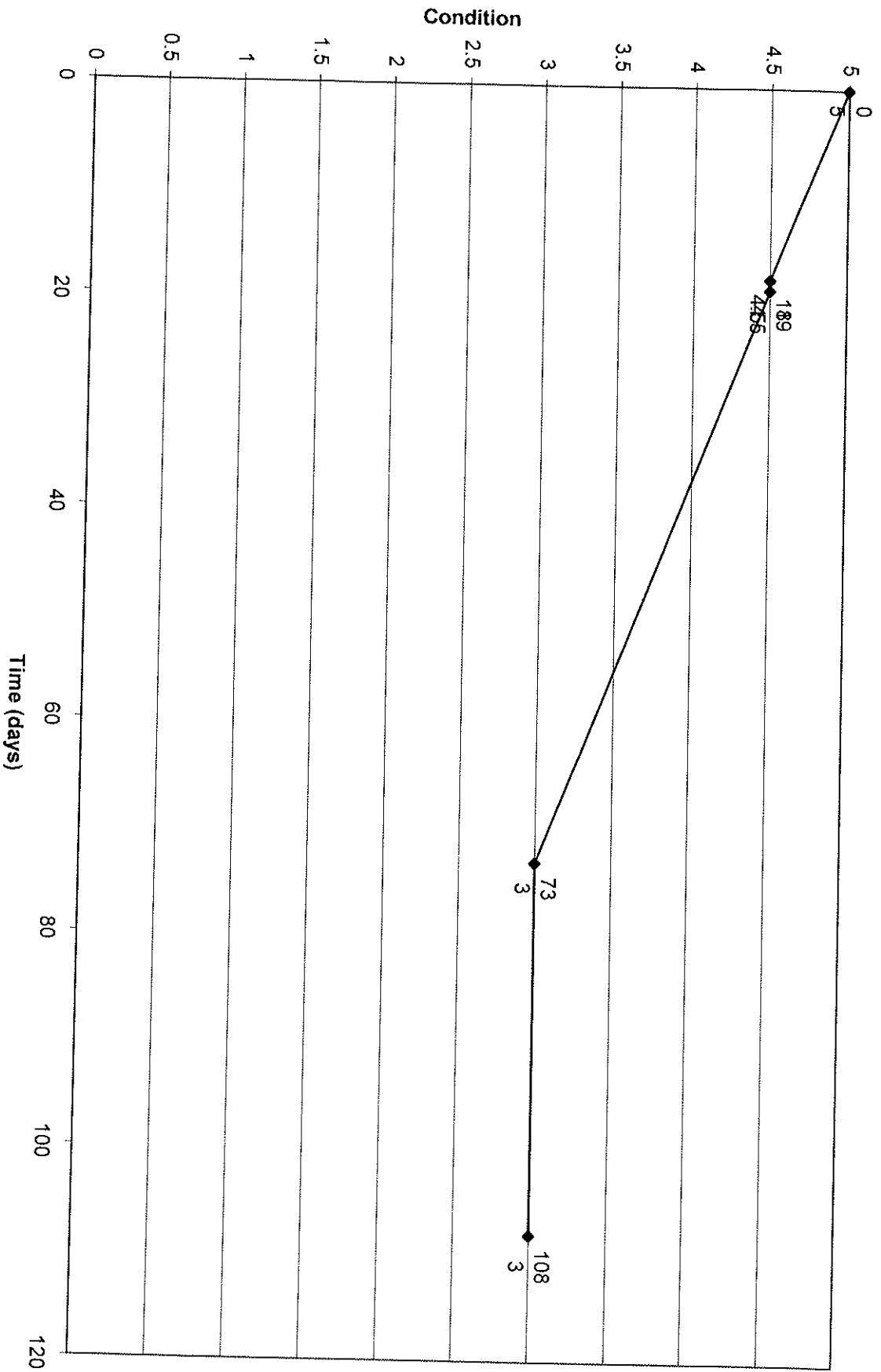
Corey



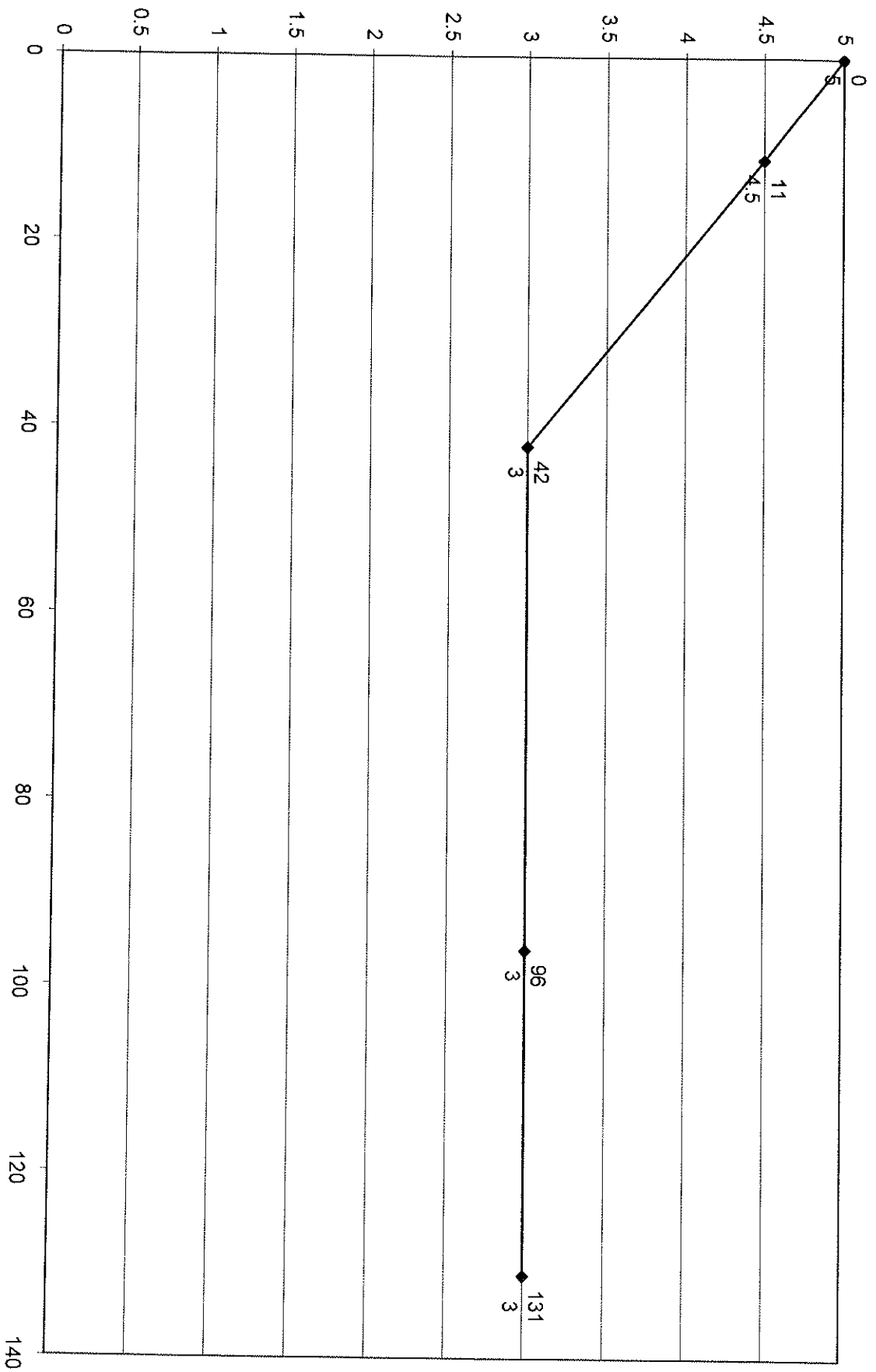
McKibbin



Jaquith

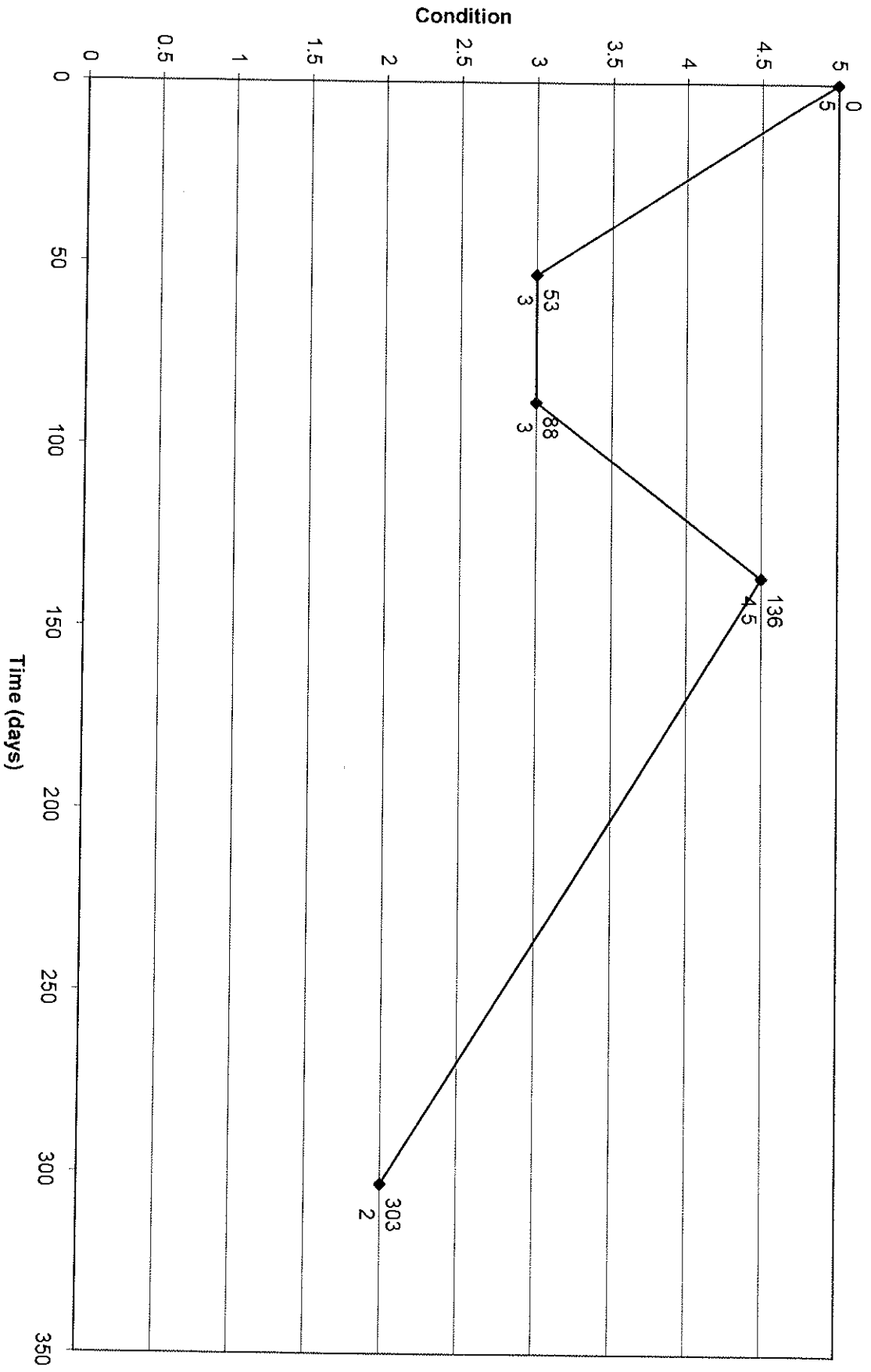


Holly Hill

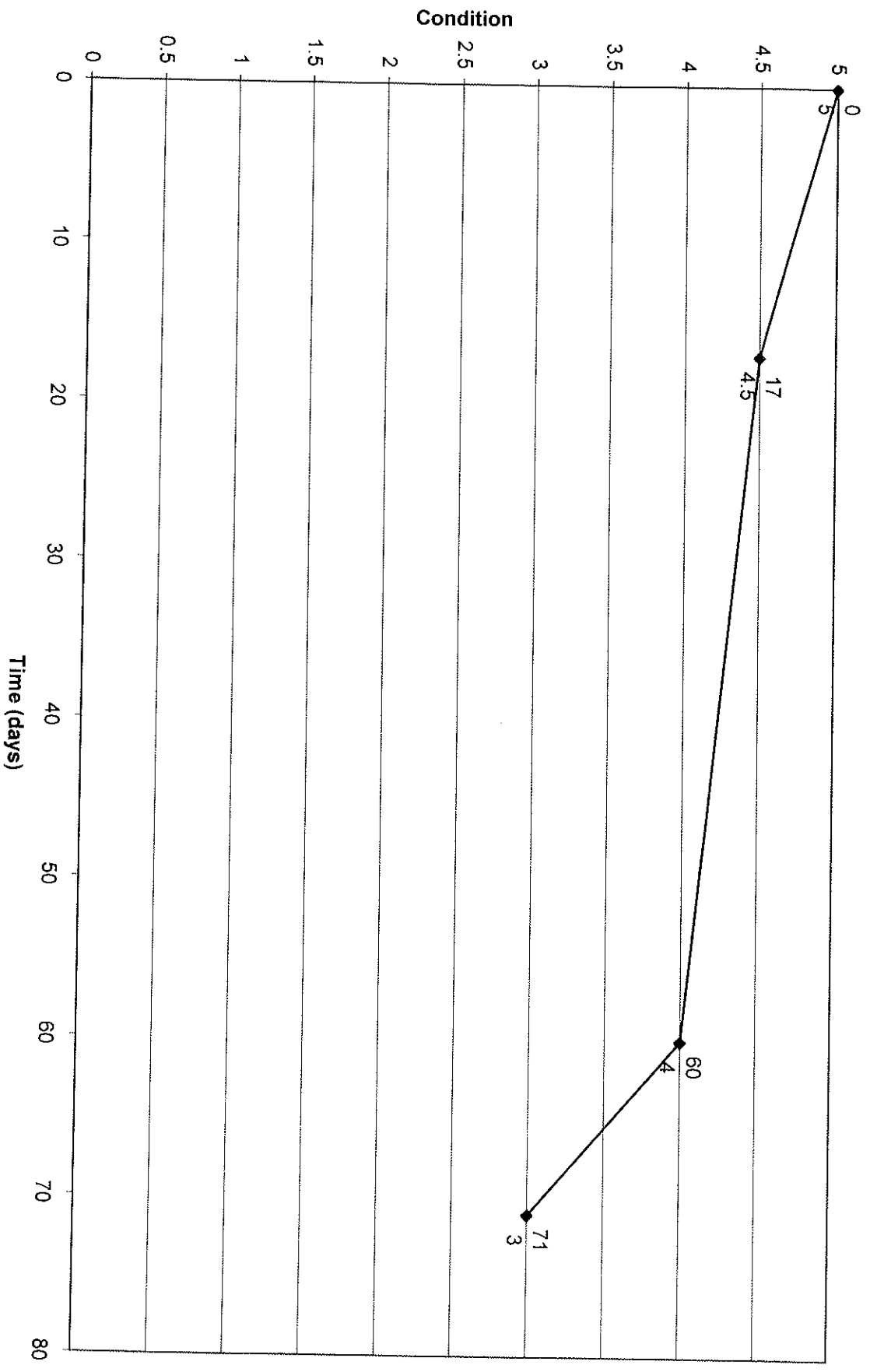




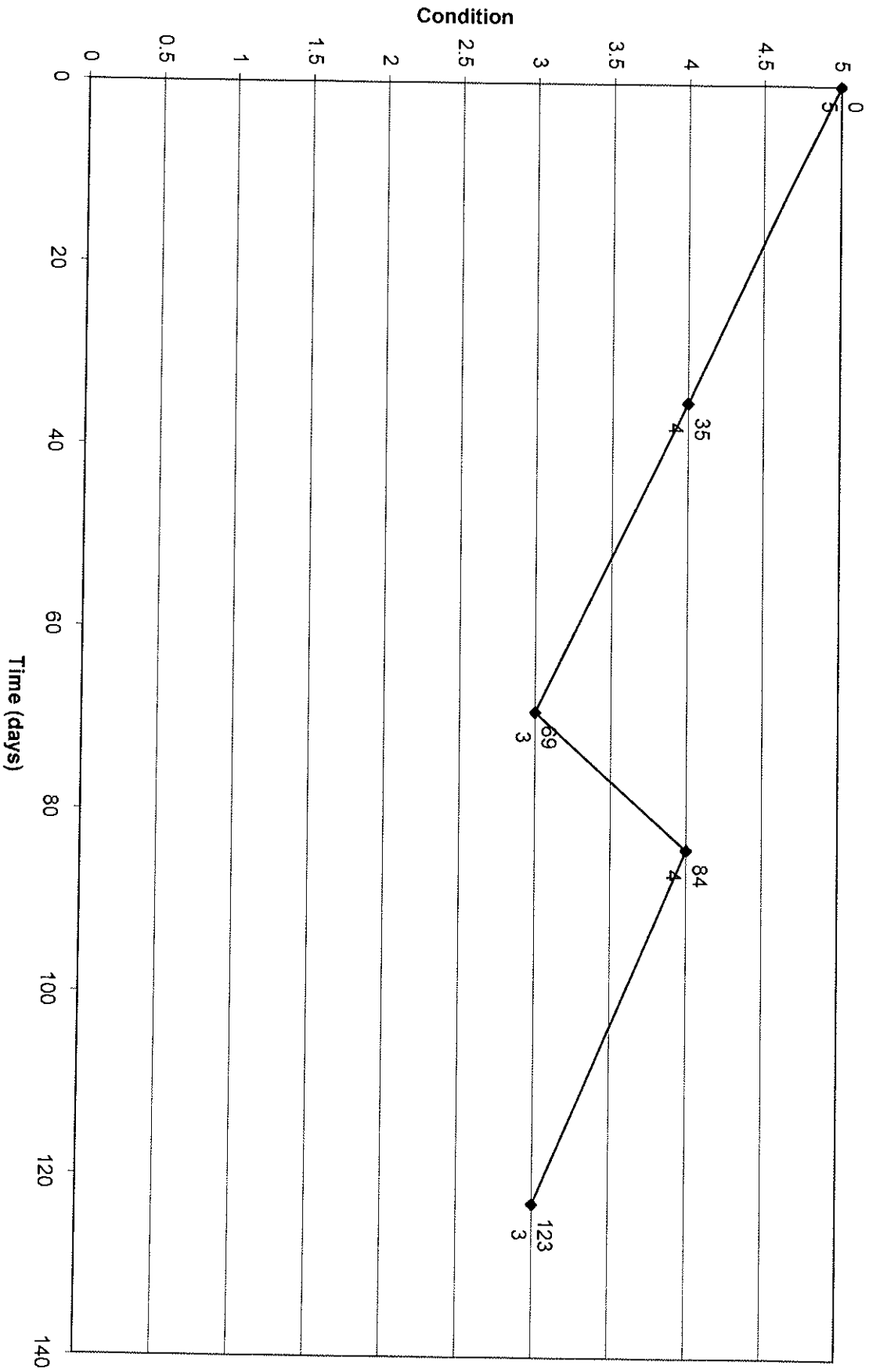
Strohmayr



Strassel



Old Wilson River Hwy



# Regression

