



Transportation Safety Action Plan

Findings and
Recommendations

Board Work Session Briefing
March 20, 2018

Overview

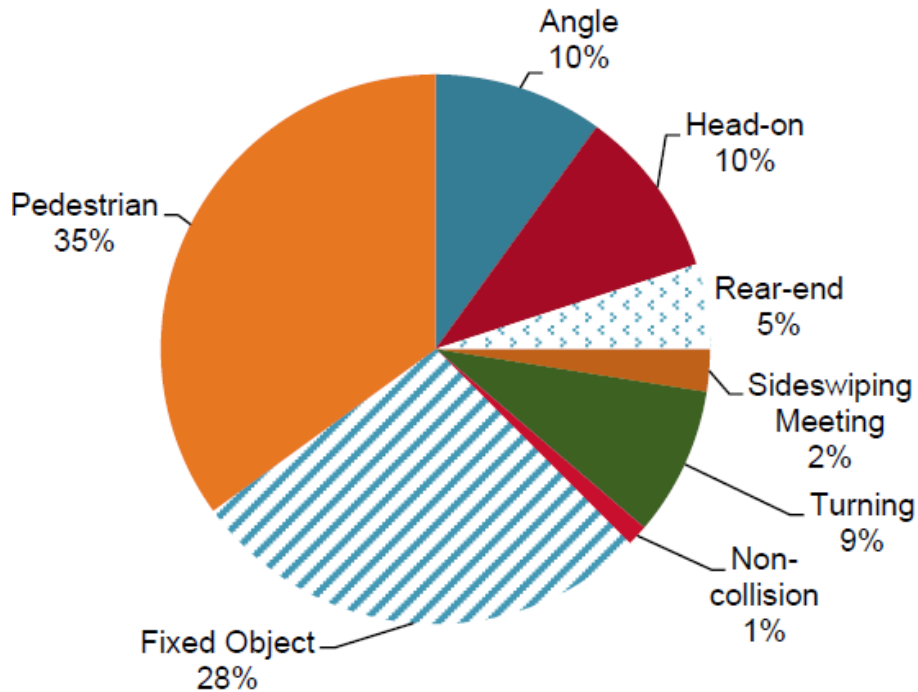
- Reviewed crash data to identify factors and trends
- Identified crash-reduction strategies
- Developed action recommendations
- ODOT grant funding
- Key stakeholders and partners:



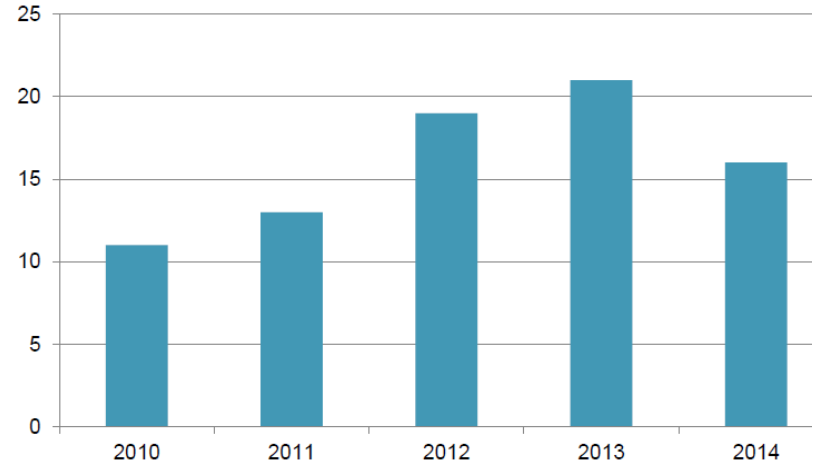
Key Findings

Traffic-related Fatalities

Washington County Fatalities by Collision Type (2010-2014)



* Collision Type is an ODOT category from the ODOT Crash Data

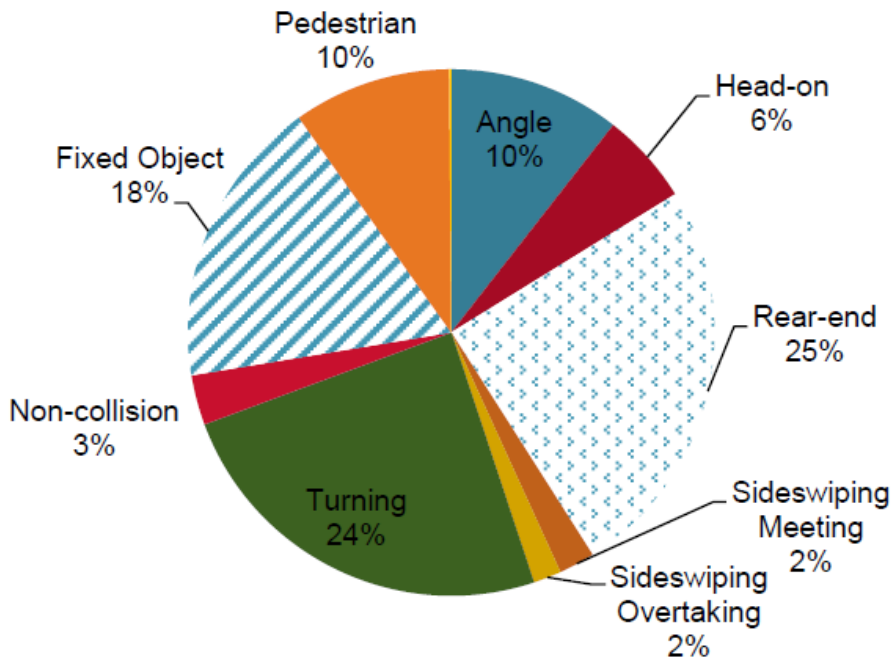


Traffic-related fatalities in Washington County (2010 -2014)

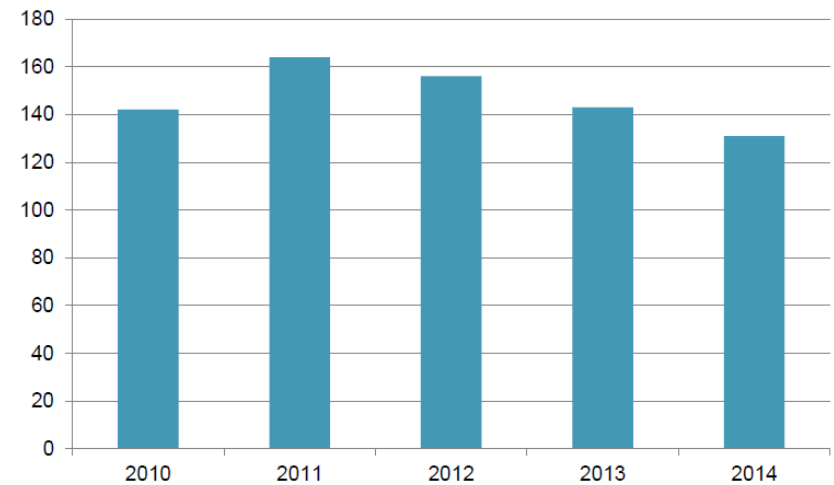
Key Findings

Traffic-related Serious Injuries

Washington County Serious Injuries by Collision Type (2010-2014)



* Collision Type is an ODOT category from the ODOT Crash Data



Serious Injuries in Washington County (2010-2014)



63%
SERIOUS INJURIES & FATALITIES CAUSED BY DISREGARDING TRAFFIC LAWS



26%
SERIOUS INJURIES & FATALITIES CAUSED BY REAR-END ACCIDENTS



81%
OF SERIOUS INJURIES & FATALITIES OCCUR IN URBAN AREAS



32
SERIOUS INJURIES & FATALITIES INVOLVING BICYCLISTS



76
SERIOUS INJURIES & FATALITIES INVOLVING PEDESTRIANS



39%
OF SERIOUS INJURIES & FATALITIES OCCUR ON ARTERIALS



46%
OF SERIOUS INJURIES & FATALITIES HAPPEN AT INTERSECTIONS

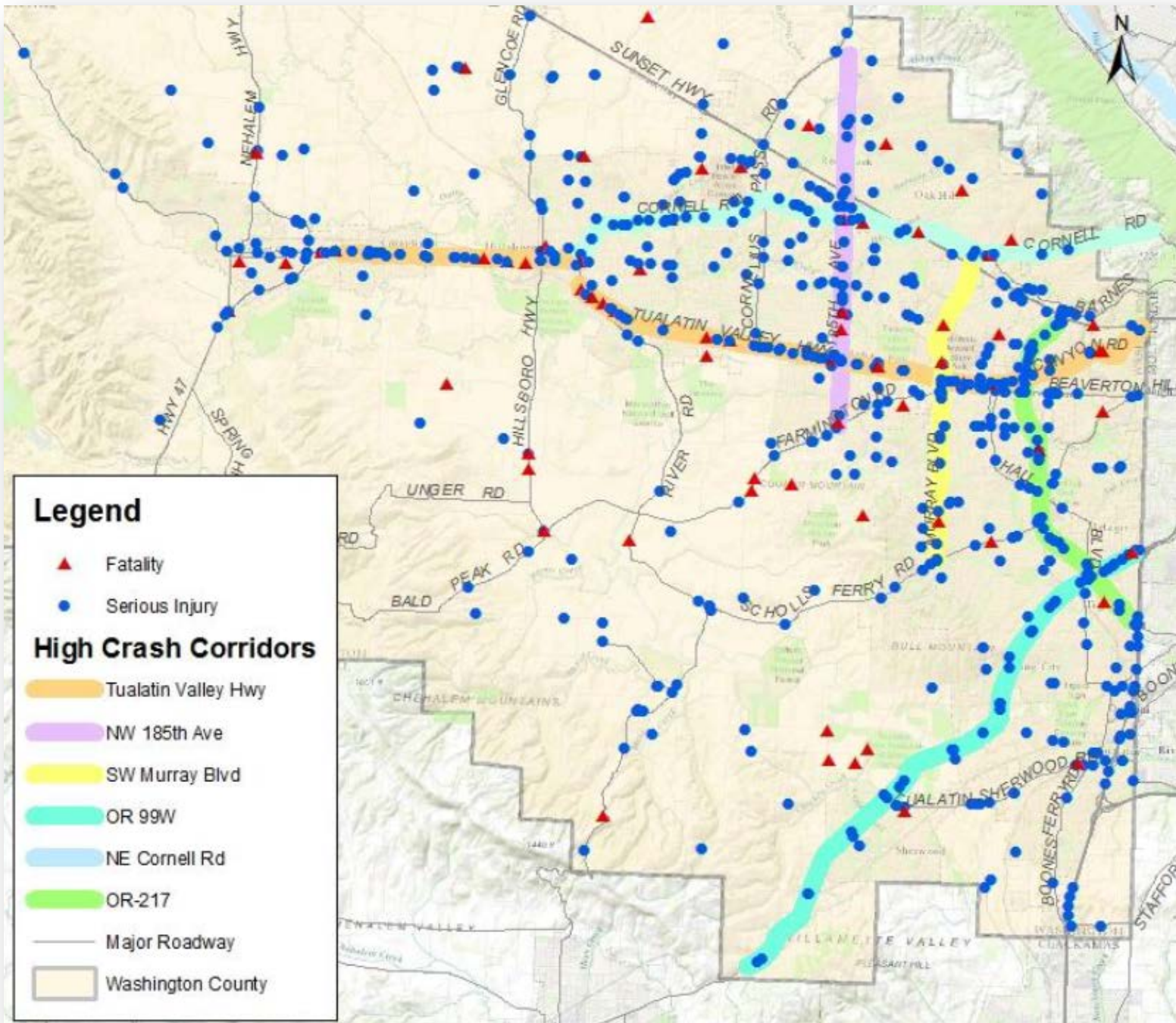


#1
PEDESTRIANS RANK FIRST IN FATAL COLLISION TYPES



24%
OF SERIOUS INJURIES & FATALITIES INVOLVE DRIVERS AGES 18-26





Approach

Address high-impact locations and contributing factors in fatal and serious injury crashes:

- Intersections
- High-crash Corridors
- Pedestrians
- Speed
- Distraction and Impairment



Strategies



Engineering



Enforcement



Education



Emergency
Response

Recommendations

Over the next 5 years address target areas through:

- Road Standards Update
- Speed Management
- Transit Stops and Pedestrian Crossings
- Roadway Illumination
- Policy and Legislation
- Safety Messaging
- Law Enforcement Efforts



Recommendations

Speed Management & Roadway Design

- Address safety in upcoming multi-agency road standards review:
 - Safety-focused review of policies/standards
 - Review effects of roadway design factors (e.g. lane widths) on vehicle speeds
- Evaluate expanding Neighborhood Streets Program (NSP) to “residential collectors”
- Support Sheriff’s Office speed enforcement efforts
- Investigate new technologies, methods and best practices for speed enforcement



Recommendations

Transit Stops & Pedestrian Crossings

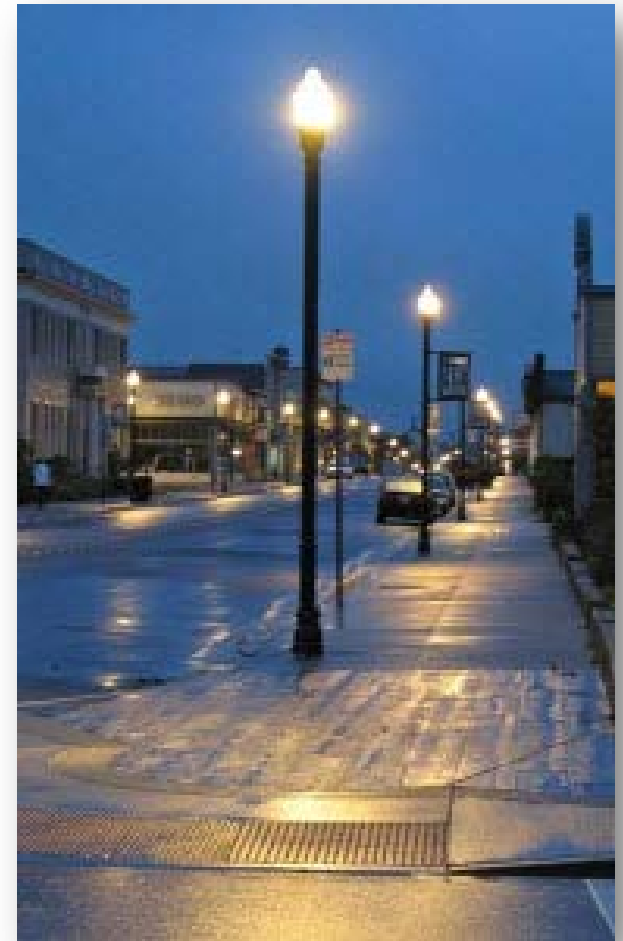
- Develop common transit stop guidelines, policies, permit process
- Streamline mid-block crossing application/review
- Review intersection design standards
- Develop a review/prioritization process for pedestrian crossing, illumination and transit stop improvement requests
- Fund improvements with anticipated HB 2017 revenues



Recommendations

Roadway Illumination

- Identify/prioritize locations for new illumination or safety upgrades (e.g. transit or pedestrian routes)
- Process improvement review for requesting/installing illumination
- Fund installation/maintenance with anticipated HB 2017 revenues



Recommendations

Policy & Legislation/Safety Messaging

- Support state legislation to clarify/ strengthen laws—impaired, aggressive and distracted driving—and new enforcement tools
- Continue county outreach programs and coordination with other groups/agencies to develop a comprehensive safety culture



Recommendations

Support Law Enforcement Efforts

- Support Sheriff's Office TSAP efforts to reduce crashes through enforcement
- Support full staffing in Sheriff's Office to assist with traffic enforcement





Questions?

