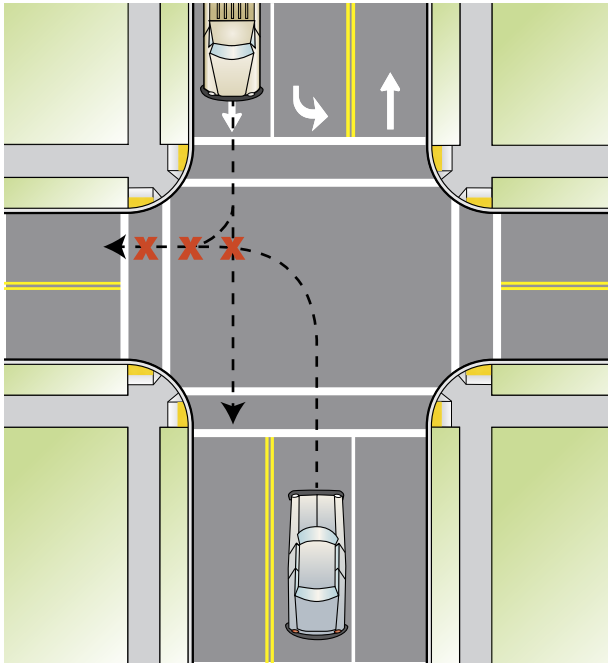


Flashing Yellow Arrow Conflict Points

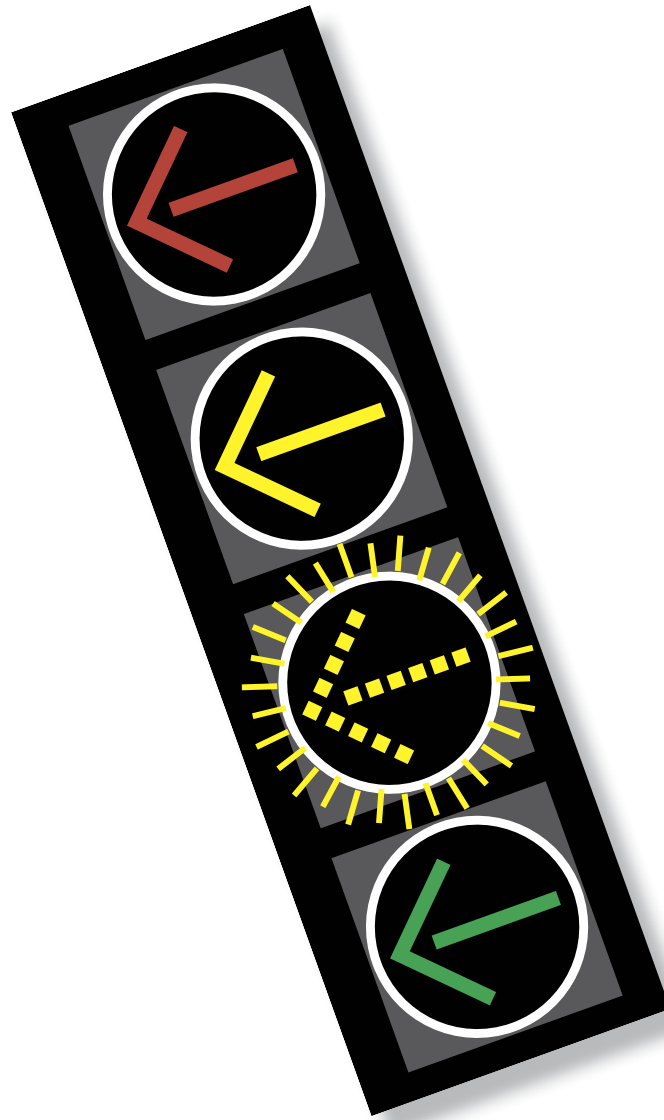
Flashing Yellow Arrow Yield Before Turning

X = Conflict Points



When you are turning left and see a FYA, the traffic coming towards you has a green light and pedestrians may have a "WALK" signal. You must YIELD to these potential conflicts:

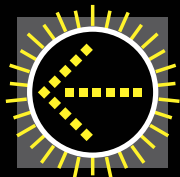
- Oncoming through traffic & bicyclists
- Oncoming right turn traffic
- Pedestrians in the crosswalk



Flashing Yellow Arrow



THE FLASHING YELLOW LEFT TURN ARROW



Flashing Yellow Arrow Yield Before Turning

OREGON DEPARTMENT OF TRANSPORTATION Traffic Engineering Unit

4040 Fairview Industrial Drive S.E.
Salem, Oregon 97302-1142

Phone: 503.986.3568 • Ask ODOT: 888.275.6368

<http://www.oregon.gov/ODOT/HWY/TS>

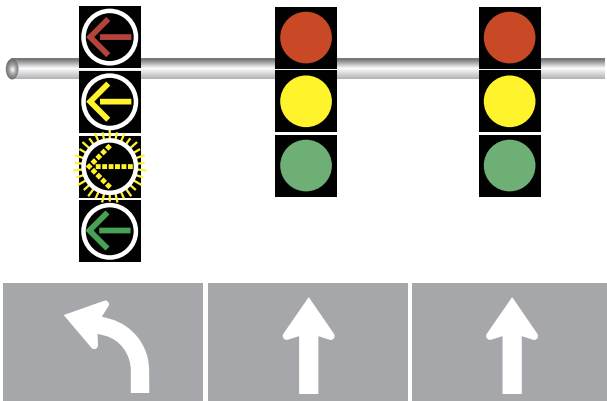
What you need to know



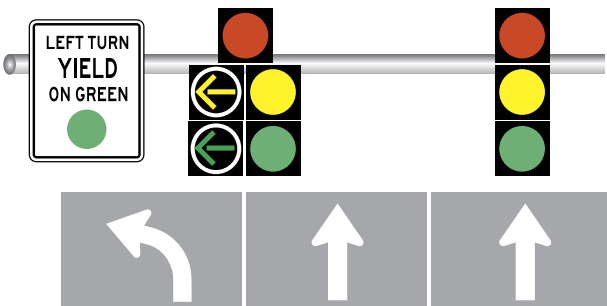
Flashing Yellow Arrow vs Traditional

The new **Flashing Yellow Arrow (FYA)** now indicates when left turns are allowed after yielding to other traffic, which engineers call a “permissive” turn. It replaces the traditional signal with a mixture of round and arrow lights, which has a circular green indication for the same permissive movement. ODOT, cities, and counties are replacing older five-light signals with the new flashing yellow arrow signal.

FLASHING YELLOW ARROW SIGNAL



TRADITIONAL – FIVE SECTION SIGNAL



The Better Left Turn Signal



Safer – The Federal Highway Administration has found that up to 20% fewer crashes occur with FYA than the traditional signal. Drivers have less confusion and make fewer mistakes when turning with FYA.

Efficient – Traffic delays are reduced and engineers can adjust for varying traffic volumes throughout the day to save you time and fuel.

FYA Driver Responsibility



Steady Red Arrow

A steady red arrow means STOP. Remain stopped until the signal changes except for turns allowed on red arrow.



Steady Yellow Arrow

A steady yellow arrow warns you that the signal is about to turn red. Do not enter the intersection. If you are within the intersection or cannot stop safely, cautiously complete the turn to clear the intersection.



Flashing Yellow Arrow

A flashing yellow arrow means you may cautiously enter the intersection only to make the movement indicated by the flashing yellow arrow. You must first yield to oncoming traffic, bicyclists, and crossing pedestrians. Carefully determine an adequate gap before making your turn.



Steady Green Arrow

A steady green arrow means you are permitted to proceed and make the movement indicated by the arrow.