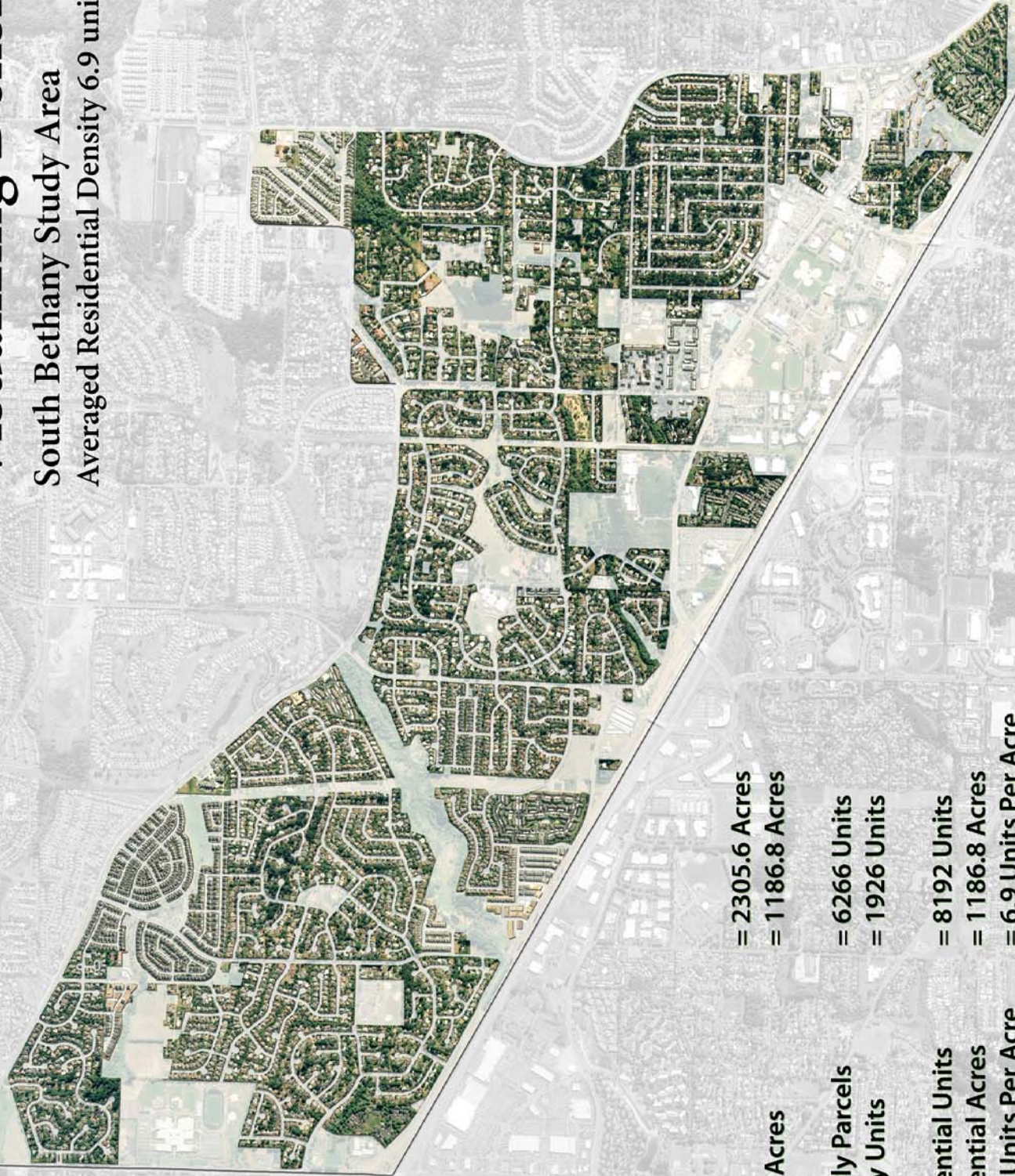


Visualizing Density

South Bethany Study Area

Averaged Residential Density 6.9 units per acre



Study Area

Residential Acres

= 2305.6 Acres

= 1186.8 Acres

Single Family Parcels

Multi Family Units

= 6266 Units

= 1926 Units

Total Residential Units

Total Residential Acres

Residential Units Per Acre

= 8192 Units

= 1186.8 Acres

= 6.9 Units Per Acre

