



Saltzman Road Improvement Project

(Laidlaw Road to Bayonne Lane)

Aug. 26, 2020
Project Advisory Committee

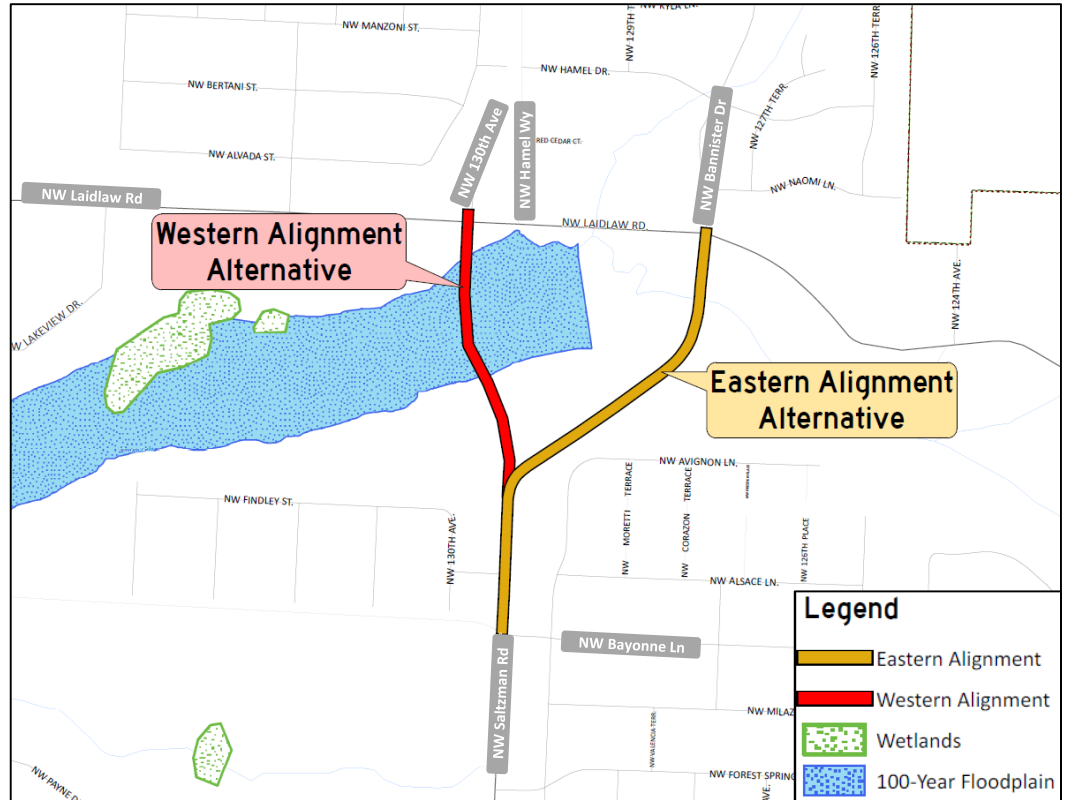
History

- Transportation System Plan
 - Saltzman Road to 130th Avenue
 - Current Saltzman Road alignment
- Community Advocacy
 - CPOs and Bethany Neighborhood Coalition advocated for an improved/new Saltzman Road alignment due to road safety concerns

History (continued)

- Board of Commissioners
 - March 2016: Approved a letter of intent to fund Saltzman Road improvements
 - October 2016: Adopted the MSTIP 3e plan, including funding for Saltzman Road
- Capital Project Services
 - Survey, studies, alternatives analysis kicked off
 - Project Advisory Committee formed

Alignment Alternatives



Existing Conditions

- East Alignment (current)
 - Safety
 - Existing homes
 - Cross section
 - Creek crossing
- West Alignment
 - Wetlands
 - THPRD property
 - Floodplain
 - Connection to 130th Avenue

Criteria for Alternatives Analysis

- Meeting County Design Criteria
- Construction Costs
 - Road
 - Bridge
 - Utilities
- Right-of-Way
 - Impacts
 - Existing

Criteria for Alternatives Analysis

(continued)

- Traffic
 - Connectivity
 - Intersection spacing
- Next steps

Schedule

- Fall 2020
 - Project Advisory Committee recommends alignment
- Early 2021
 - Board selects alignment
- Spring 2021
 - Bike/Pedestrian Facilities alternatives selection

Schedule (continued)

- Fall 2021
 - Finalize project footprint, ROW acquisition
- Summer 2022
 - Final design complete
- Fall 2022
 - Bid for construction